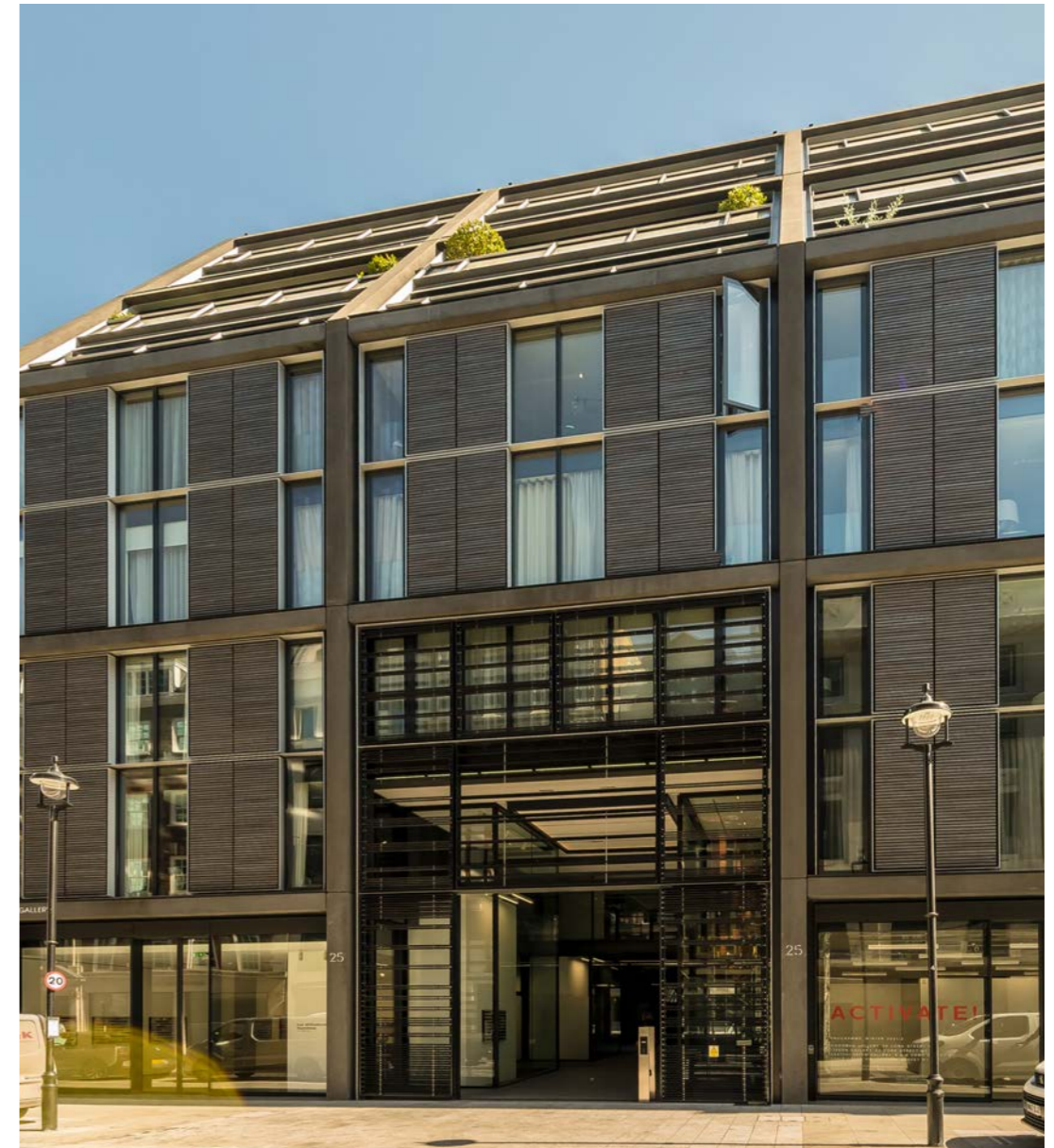


CORK STREET
MAYFAIR

Dexters



Cork Street Mayfair

A three bedroom lateral apartment situated on the second floor of this luxury development located in the heart of Mayfair.



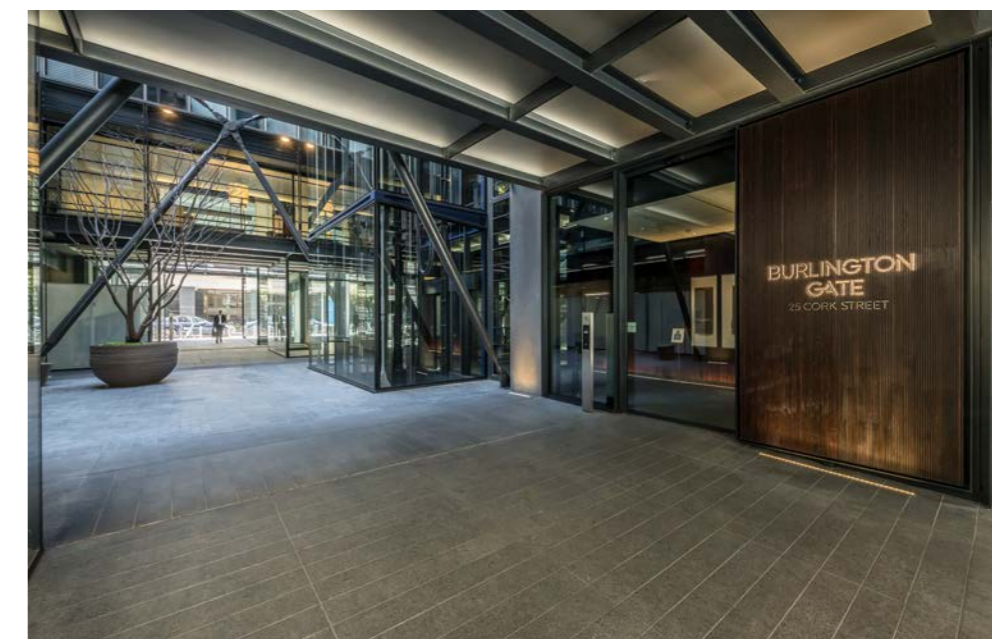
This spacious apartment has an open plan kitchen and elegant reception room with dining area, perfect for entertaining family and friends. The property further consists of a principal bedroom with en suite bathroom and dressing area, two additional double bedrooms, one with en suite shower room and a family bathroom.

The development includes a spa and state-of-the-art gymnasium with a air-conditioned fitness facility along with sauna and treatment room. In addition, there is a 24-hour concierge service and secure underground parking.

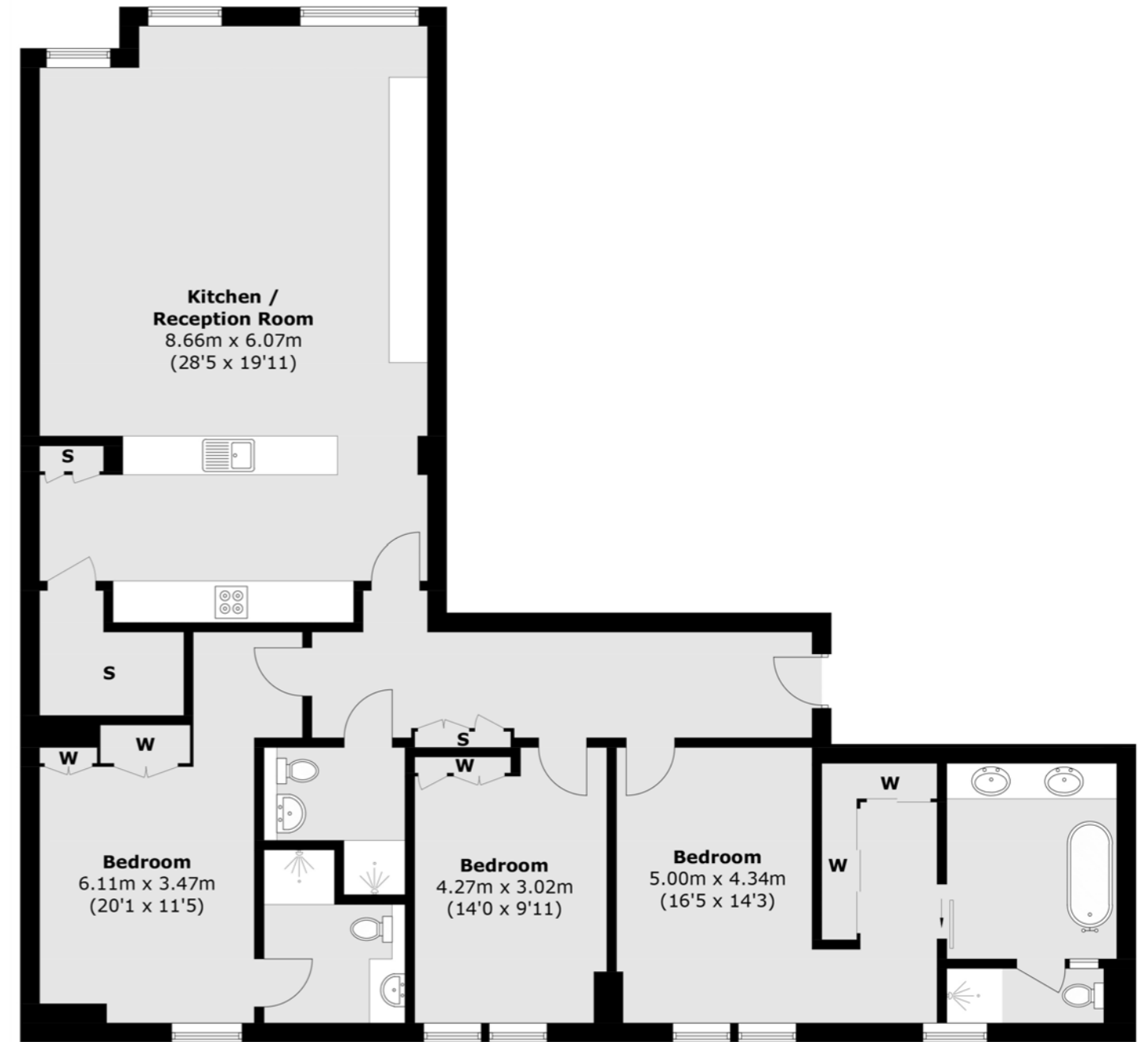
Designed by Rogers Stirk Harbour + Partners and offering contemporary luxury, Burlington Gate proudly sits in London's most esteemed neighbourhood as a development of 42 exclusive apartments.

Cork Street is part of the Burlington Estate which was developed from the 18th Century. The first Earl of Burlington was Richard Boyle (1612-1698), second Earl of Cork; hence the street name. Well located between Saville Row and Old Bond Street, this development is in the centre of Mayfair's Art Gallery district.

- Three Double Bedrooms
- Three Bathrooms
- Secure Private Parking
- 24-Hour Concierge
- Gymnasium
- Residents Lounge
- Spa Managed By Bodyism
- 995 Year Lease







TOTAL APPROX. FLOOR AREA 1,603.8 SQ. FT (149.0 SQ. M)

Energy Rating: B. We aim to make our particulars both accurate and reliable. However they are not guaranteed; nor do they form part of an offer or contract. If you require clarification on any points then please contact us, especially if you're traveling some distance to view. Please note that appliances and heating systems have not been tested and therefore no warranties can be given as to their good working order.



Price on application

Dexters Mayfair
020 7590 9590



Dexters

dexters.co.uk