

Mark Anthony

Estate Agents

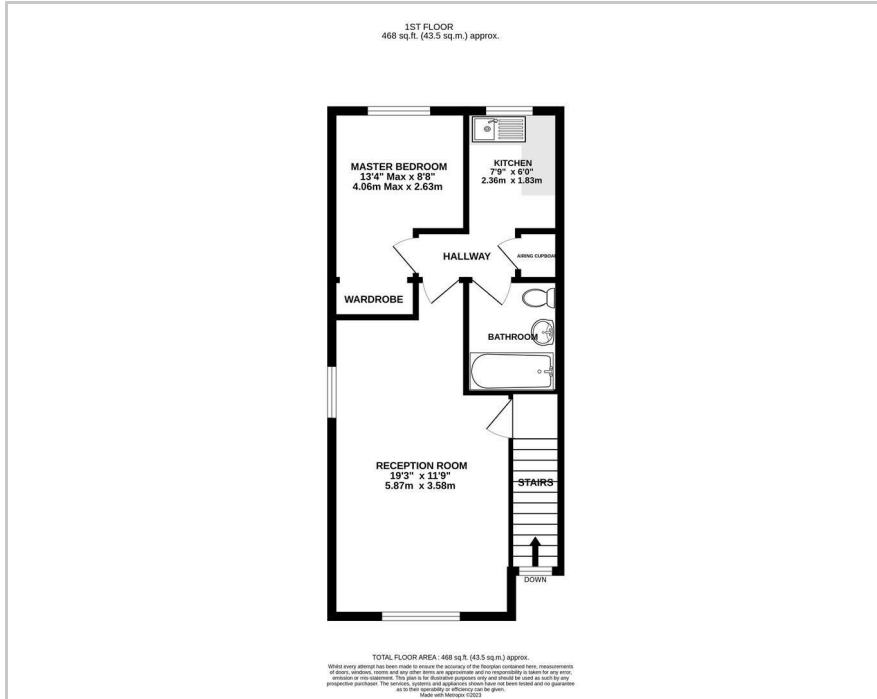


12 Godwin Close, West Ewell, KT19 9LD

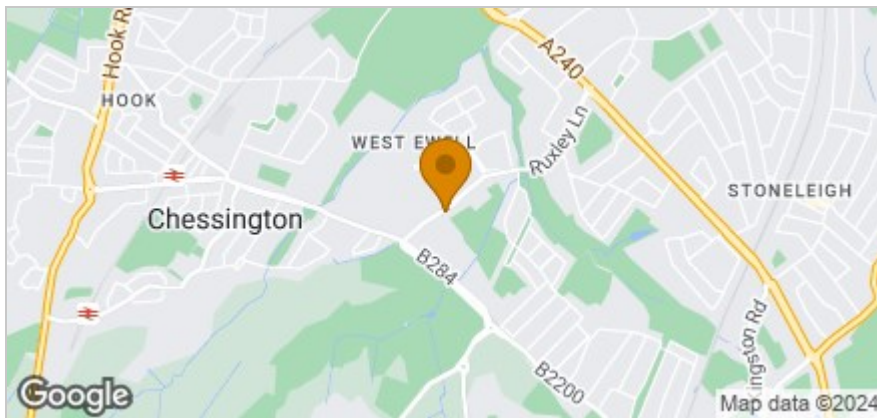
Offers in excess of £250,000



Floor Plan



Area Map



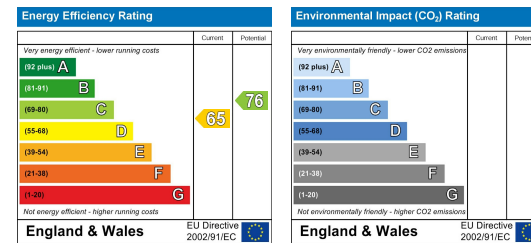
Accommodation

- First floor maisonette accessed via own front door
- Ideal investment (rental value circa £1200 pcm) or FTB purchase
- New lease to be granted upon completion
- Light and airy accommodation with spacious reception/dining room
- Modern kitchen with high gloss units
- Double bedroom with deep built in wardrobe
- Spacious loft accessed via integral ladder
- No onward chain
- One allocated parking space
- EPC Rating D

Viewing

Please contact our Ewell Village Office on 02083937275 if you wish to arrange a viewing appointment for this property or require further information.

Energy Efficiency Graph



These particulars, whilst believed to be accurate are set out as a general outline only for guidance and do not constitute any part of an offer or contract. Intending purchasers should not rely on them as statements of representation of fact, but must satisfy themselves by inspection or otherwise as to their accuracy. No person in this firm's employment has the authority to make or give any representation or warranty in respect of the property.