

Mark Anthony

Estate Agents



14 Belfield Road, West Ewell, KT19 9SY
Offers in excess of £600,000





14 Belfield Road, West Ewell, KT19 9SY

Offers in excess of £600,000

Located in a highly sought after West Ewell location, this extended Dutch Barn style family home offers spacious accommodation. A viewing is highly recommended to fully appreciate this property, brought to the market with No Onward Chain.

Situated on a popular, quiet tree lined residential road within a short walk of local shops and Ewell West Mainline station with its services to London Waterloo. Epsom town centre is around 1.5 miles away and offers excellent High Street shopping.

The 1400 sq ft of accommodation arranged over 2 floor includes a welcoming 10 ft by 9 ft entrance hall that could comfortably used as the home office, front reception room, rear reception and conservatory, fitted kitchen and family bathroom.

The first floor has three good sized bedrooms with the 17 ft master having built in wardrobes and bedroom two ensuite shower room.

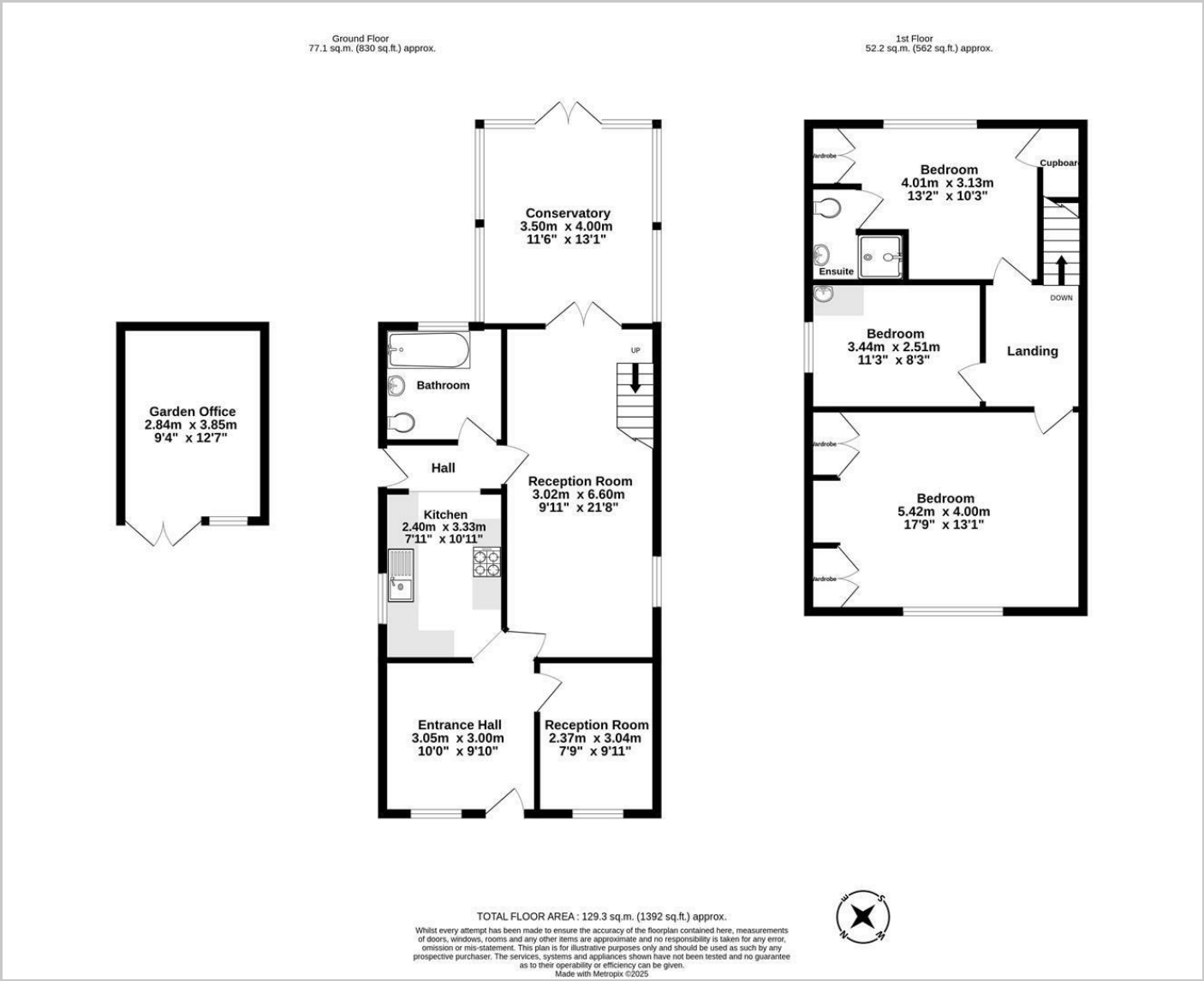
The predominantly lawned rear garden extends to 50 ft and the paved frontage provides ample off street parking.

Viewing is essential to fully appreciate all that this super family home offers.

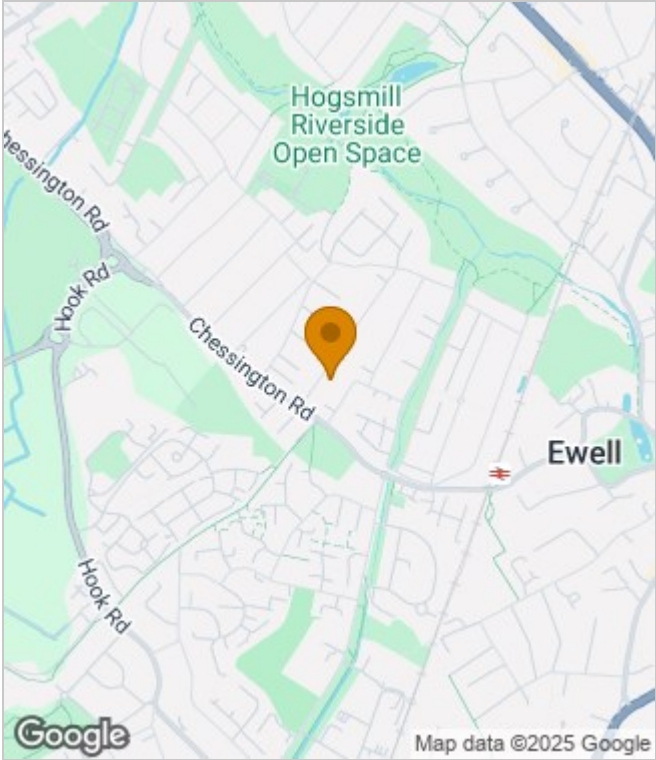
- Detached Dutch Barn style family home
- No onward chain
- Three bedrooms, one with ensuite shower room
- Two reception rooms and conservatory
- Fitted kitchen
- Modern family bathroom
- 50 ft South Easterly aspect rear garden
- Ample off street parking
- Viewing highly recommended
- Eps Rating: D



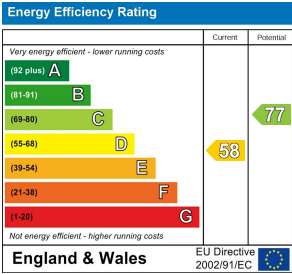
Floor Plans



Area Map



Energy Performance Graph



These particulars, whilst believed to be accurate are set out as a general outline only for guidance and do not constitute any part of an offer or contract. Intending purchasers should not rely on them as statements of representation of fact, but must satisfy themselves by inspection or otherwise as to their accuracy. No person in this firms employment has the authority to make or give any representation or warranty in respect of the property.