

# Mark Anthony

Estate Agents



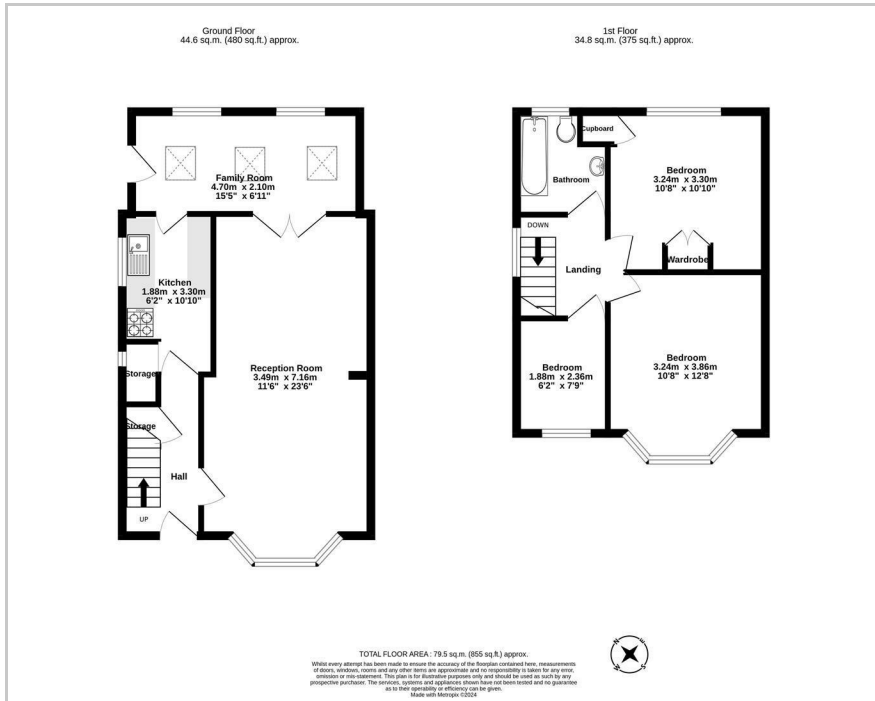
12 The Hawthorns, Ewell, KT17 2QA

£600,000

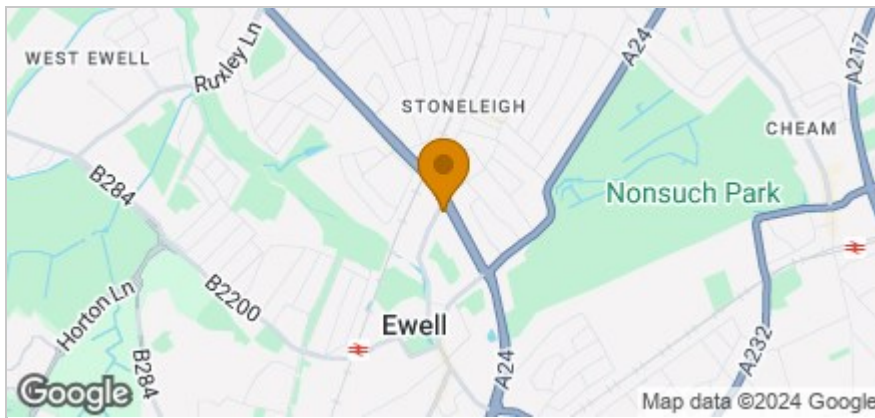




## Floor Plan



## Area Map



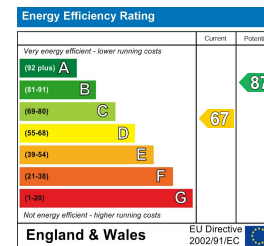
## Accommodation

- \*\*\* DEVELOPMENT POTENTIAL (STPP)\*\*\* New home or substantial extension
- Side plot 21 ft
- No chain
- Requires modernisation
- Three bedrooms
- 23 ft Through lounge
- Eps Rating: D

## Viewing

Please contact our Ewell Village Office on 02083937275 if you wish to arrange a viewing appointment for this property or require further information.

## Energy Efficiency Graph



These particulars, whilst believed to be accurate are set out as a general outline only for guidance and do not constitute any part of an offer or contract. Intending purchasers should not rely on them as statements of representation of fact, but must satisfy themselves by inspection or otherwise as to their accuracy. No person in this firm's employment has the authority to make or give any representation or warranty in respect of the property.