

Mark Anthony

Estate Agents



3 Portway Crescent, Ewell Village, Surrey, KT17 1SX

£740,000

 4  2  2  D



3 Portway Crescent, Ewell Village, Surrey, KT17 1SX

£740,000

Mark Anthony Estate agents are delighted to act as sole agents for this detached family home located in the heart of Ewell Village. The position is ideal for Village life with its excellent schools, such as Glyn, Ewell Grove and Ewell Castle, Shops, Restaurants, Library, Medical Centre and Supermarkets are all on your door step.

The location is extremely convenient for Ewell East and Ewell West Mainline stations with trains to London Waterloo, London Bridge and Victoria.

The accommodation comprises welcoming entrance hall leading to through lounge with deep bay window flooding the room with light and patio doors accessing the low maintenance rear garden, fitted kitchen, bedroom four which could comfortably be used as the home office, the ground floor is completed with the all important cloakroom.

The first floor provides three well proportion bedrooms the master bedroom having ensuite shower room, family bathroom with white suite completes the accommodation.

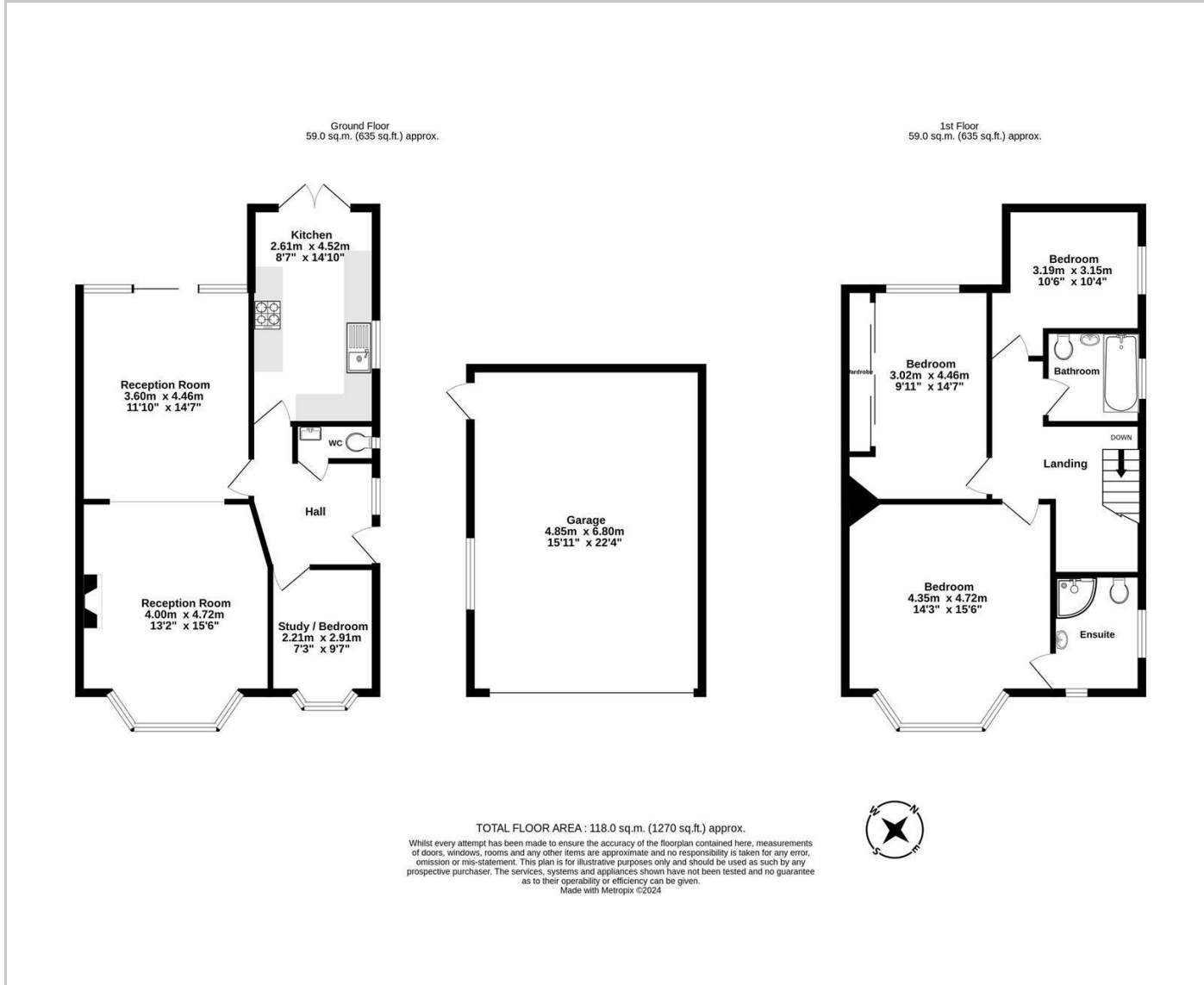
Situated on a bold corner plot the property offers the potential to extend (subject to the usual planning consents).

The rear garden is paved providing a super space for the family and entertaining.

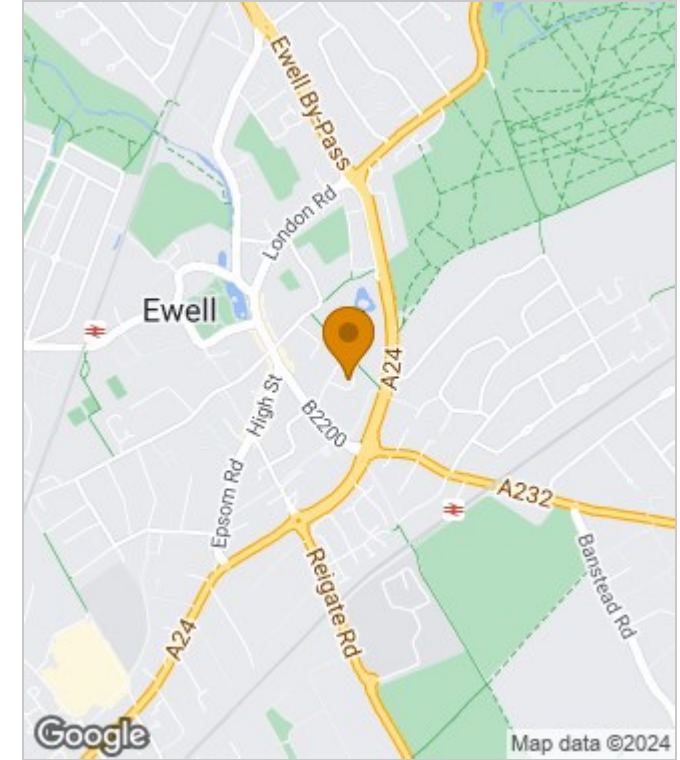
- Four bedroom detached family home
- Located in the heart of Ewell Village, walking distance to Mainline stations
- Situated on a bold corner plot with potential to extend (stpp)
- Through reception / dining room
- Downstairs cloakroom
- Master bedroom with ensuite shower room
- Downstairs bedroom four/ office
- Low maintenance rear garden
- Off street parking and detached double garage
- Epc Rating: D



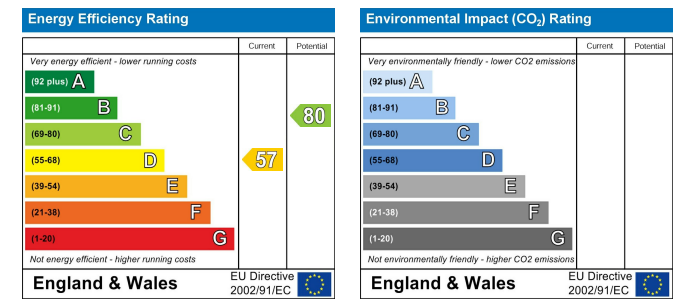
Floor Plans



Area Map



Energy Performance Graph



These particulars, whilst believed to be accurate are set out as a general outline only for guidance and do not constitute any part of an offer or contract. Intending purchasers should not rely on them as statements of representation of fact, but must satisfy themselves by inspection or otherwise as to their accuracy. No person in this firm's employment has the authority to make or give any representation or warranty in respect of the property.