

Mark Anthony

Estate Agents



20 Bradford Drive, Ewell Court, KT19 0AH
Offers in excess of £625,000

 3  1  2  E



20 Bradford Drive, Ewell Court, KT19 0AH

Offers in excess of £625,000

Mark Anthony Estate Agents are pleased to market this detached home situated in the highly regarded Ewell Court area; located near beautiful, historical grounds and extensive parkland which are great for walks. Nearby, there is a parade of local shops and Stoneleigh Mainline station which has direct services to London Waterloo.

The accommodation comprises: entrance porch leading to a welcoming and spacious reception hall, two separate reception rooms, fitted kitchen with integrated appliances, rear lobby leading to a downstairs W.C.

On the first floor there is a family bathroom with a white suite and three good size bedrooms.

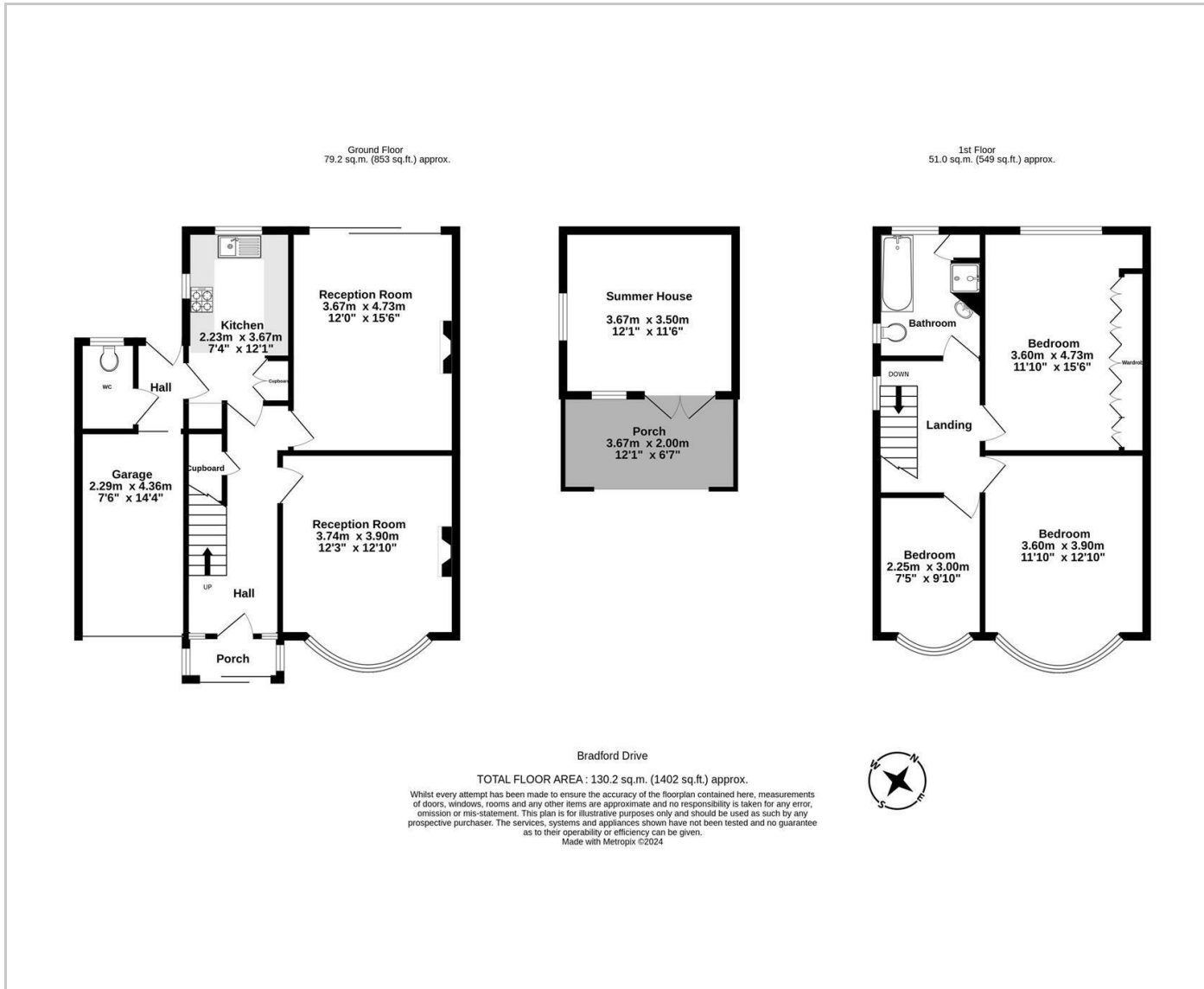
Outside the property there is off road parking leading to a garage. A well stocked and loved rear garden measuring 80ft with a summer house and garden pond.

The property also features gas radiator heating and double glazing. The property comes to the market as end of chain and updating is required; viewing is highly recommended.

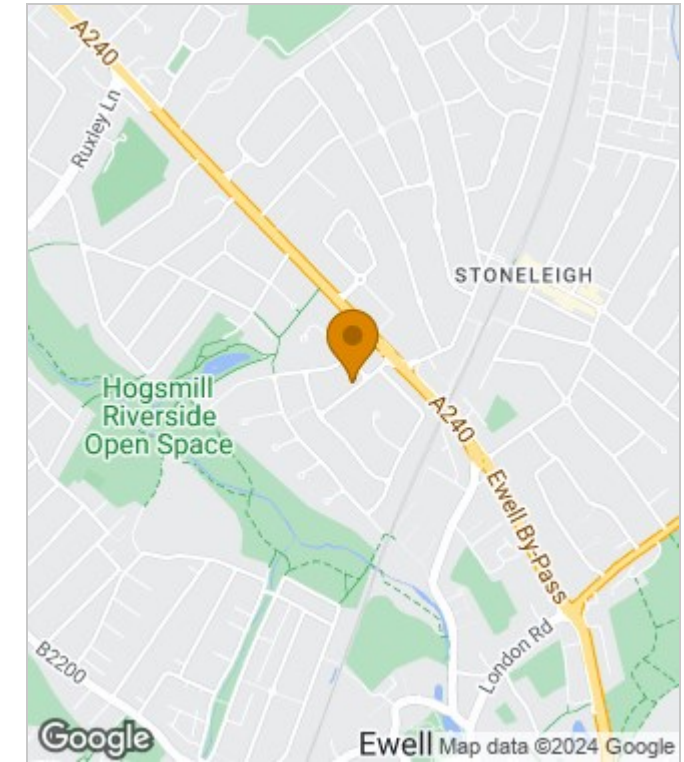
- Detached home
- Situated in the highly regarded Ewell Court area
- Near Historic grounds and pleasant walks
- Spacious and welcoming reception hall
- Two separate reception rooms
- Fitted kitchen with integrated appliances
- Three bedrooms and family bathroom with a white suite
- Well loved and stocked 80ft rear garden
- Updating is required and no chain
- Epc Rating E



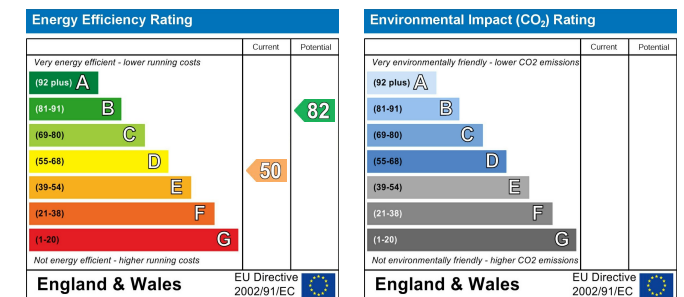
Floor Plans



Area Map



Energy Performance Graph



These particulars, whilst believed to be accurate are set out as a general outline only for guidance and do not constitute any part of an offer or contract. Intending purchasers should not rely on them as statements of representation of fact, but must satisfy themselves by inspection or otherwise as to their accuracy. No person in this firm's employment has the authority to make or give any representation or warranty in respect of the property.