

6 HIGHLAND CRESCENT  
CRIEFF, PH7 4LH

IrvingGeddes  
W.S. • Solicitors • Estate Agents





## 6 HIGHLAND CRESCENT, CRIEFF, PH7 4LH

Irving Geddes are delighted to offer for sale this well presented three bedroom detached bungalow located in a highly sought after residential area of Crieff, on the western periphery of the town.

The layout comprises; HALLWAY with storage, good sized LOUNGE, attractive BREAKFASTING KITCHEN with rear door, 2 DOUBLE BEDROOMS (master with built-in wardrobe), a SINGLE BEDROOM/STUDY, and BATHROOM. The property has gas central heating and is double glazed throughout.

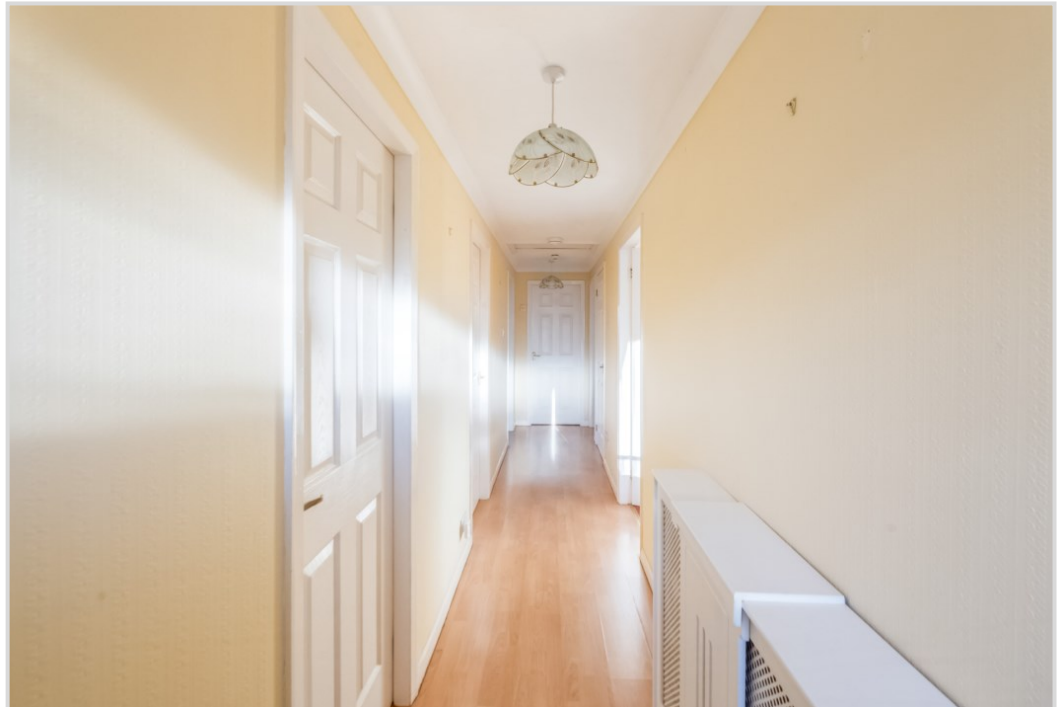
No.6 benefits from attractive private gardens. The front lawn with timber fence and planted border, the adjacent paved and gravel driveway leads to a large single garage. The landscaped fully-enclosed rear has two paved patios, timber shed, a raised section of lawn, planted borders and gravel beds.

A well proportioned bungalow enjoying a prime location, offered in move-in condition. Early viewing advised.



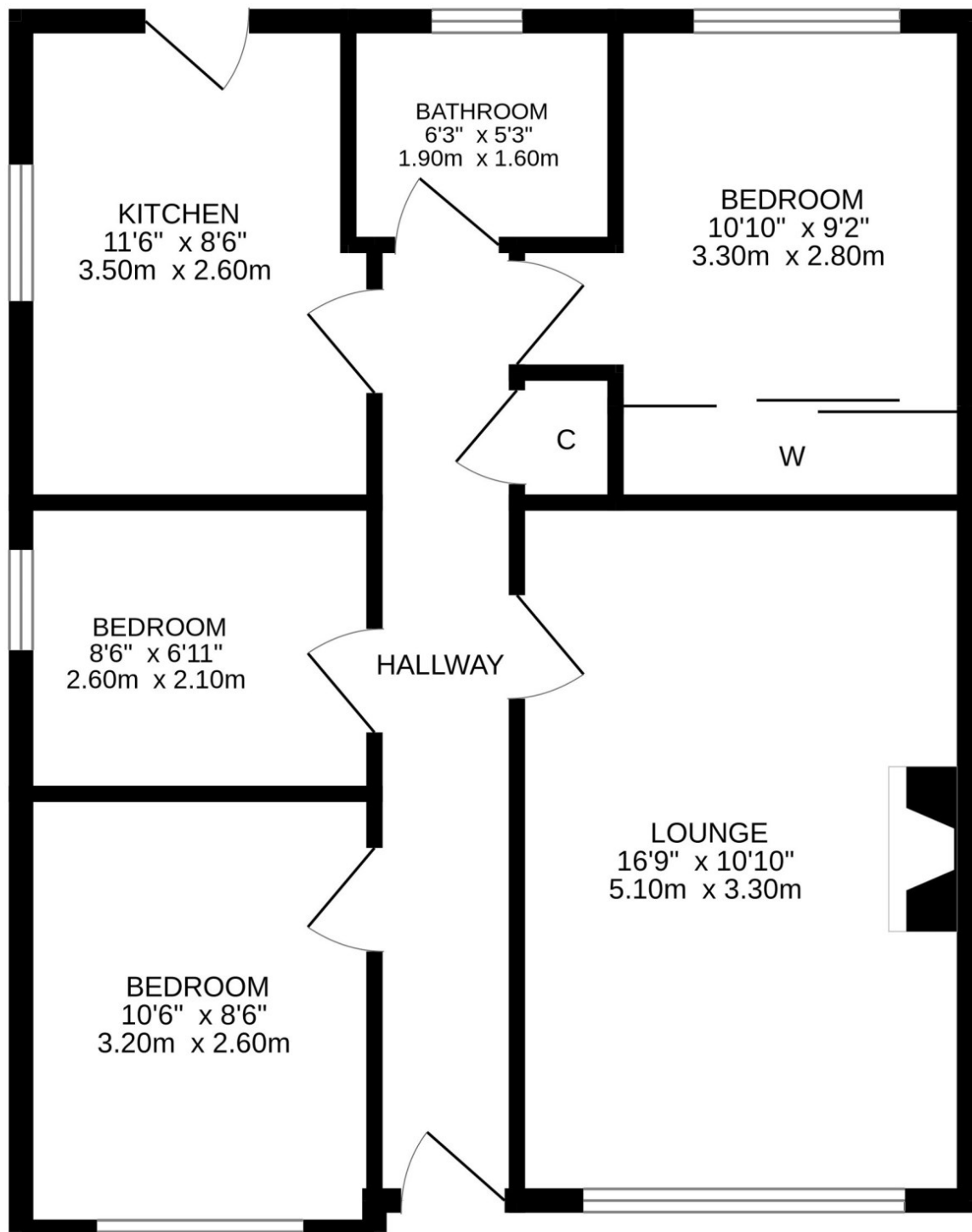
**IrvingGeddes**  
W.S. • Solicitors • Estate Agents











Video <https://my.matterport.com/show/?m=NLo4KuVABw1>

**Energy Performance** Rated 'D'. **Council Tax** Band 'D'.

**Services** Mains electric, gas, water and drainage.

**Viewing** Strictly by appointment through Irving Geddes

These particulars are believed to be correct, but their accuracy is not guaranteed and they do not form part of any contract. All measurements shown are approximate only.



**Crieff**  
25 West High Street, PH7 4AU  
Tel: 01764 653771

**Crieff**  
14 Comrie Street, PH7 4AZ  
Tel: 01764 653771

**Comrie**  
1 Drummond Street, PH6 2DW  
Tel: 01764 670325

**Aberfeldy**  
6 The Square, PH15 2DD  
Tel: 01887 822722

