

86 BURRELL STREET
CRIEFF, PERTSHIRE, PH7 4DG



86 BURRELL STREET, CRIEFF, PH7 4DG

Irving Geddes are delighted to offer for sale this well presented two bed terraced cottage enjoying a great location, within easy reach of Crieff town centre. The property has a small private rear garden & parking, gas central heating & well proportioned accommodation.

Set over two floors, comprising on the ground floor; HALL with stairs to upper floor and storage beneath, large dual-aspect LOUNGE & fitted KITCHEN (white goods included) with door to garden. There are two DOUBLE BEDROOMS on the upper floor, both with built-in wardrobes, and a family BATHROOM.

A small enclosed private garden, with adjacent parking place, lies to the rear. Steps with extended decking lead down to a paved path and gravel area, with space for a small bistro set and planters.

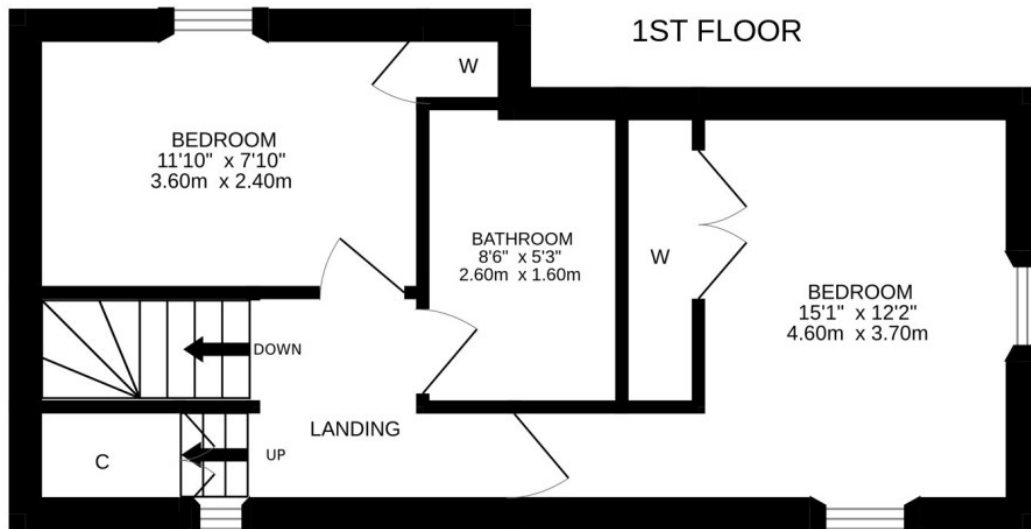
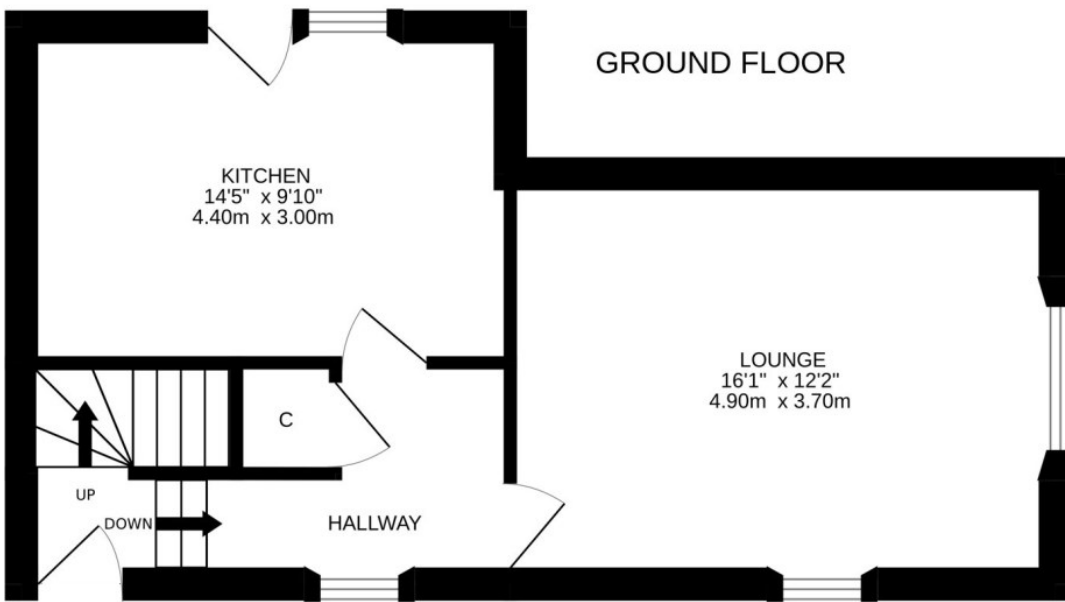
86 Burrell Street is an attractive property likely to have broad appeal to those looking for a permanent residence, holiday home or investment.











Energy Performance 'C' Rating Council Tax Band 'C'

Video Tour <https://my.matterport.com/show/?m=TnTfLAqzq6t>

Viewing Strictly by appointment through Irving Geddes.



Crieff
25 West High Street, PH7 4AU
Tel: 01764 653771

Comrie
1 Drummond Street, PH6 2DW
Tel: 01764 670325

Aberfeldy
6 The Square, PH15 2DD
Tel: 01887 822722