

HOMESTEAD

DOLLERIE TERRACE, CRIEFF, PH7 3QQ



HOMESTEAD, DOLLERIE TERRACE, CRIEFF, PH7 3QQ

Irving Geddes are delighted to offer for sale this immaculately presented, substantial four bedroom detached villa located in a mature residential area of Crieff. Modernised & extended, Homestead is a most appealing family home set within beautifully landscaped garden grounds. Set over two floors, the spacious and versatile layout comprises;

Ground Floor - Large HALLWAY with utility & storage cupboards, W.C., OFFICE/SNUG, LOUNGE, DINING ROOM, stunning DINING KITCHEN with bi-fold patio doors, and TWO DOUBLE BEDROOMS.

First Floor - Upper LANDING with seating/study area & storage cupboard, FAMILY BATHROOM and TWO DOUBLE BEDROOMS (Master EN-SUITE SHOWER ROOM).

The garden is a notable feature, the front has ample private off-street parking with a mono-bloc driveway & gravel area, and detached single garage with auto roller door. A mature hedge border, area of lawn and planted bed, with mono-bloc path to pedestrian gate. The fully enclosed rear has a gravel bed, further area of lawn, paved patio, a fantastic two-tier patio of composite decking with direct access from the kitchen, a most attractive timber clad summerhouse/garden studio, & timber shed.

Homestead is a stunning bespoke home of rare quality, offering a flexible layout and easily maintained garden grounds designed for entertaining and relaxing. Likely to be a very welcome addition to the market & early viewing is advised.



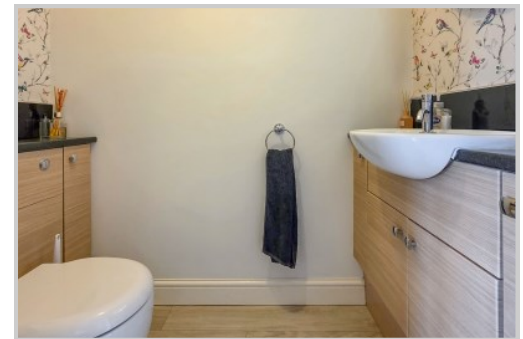
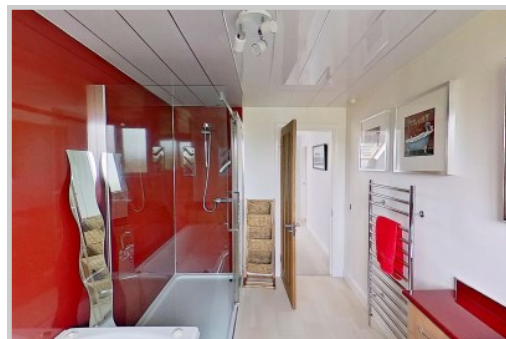








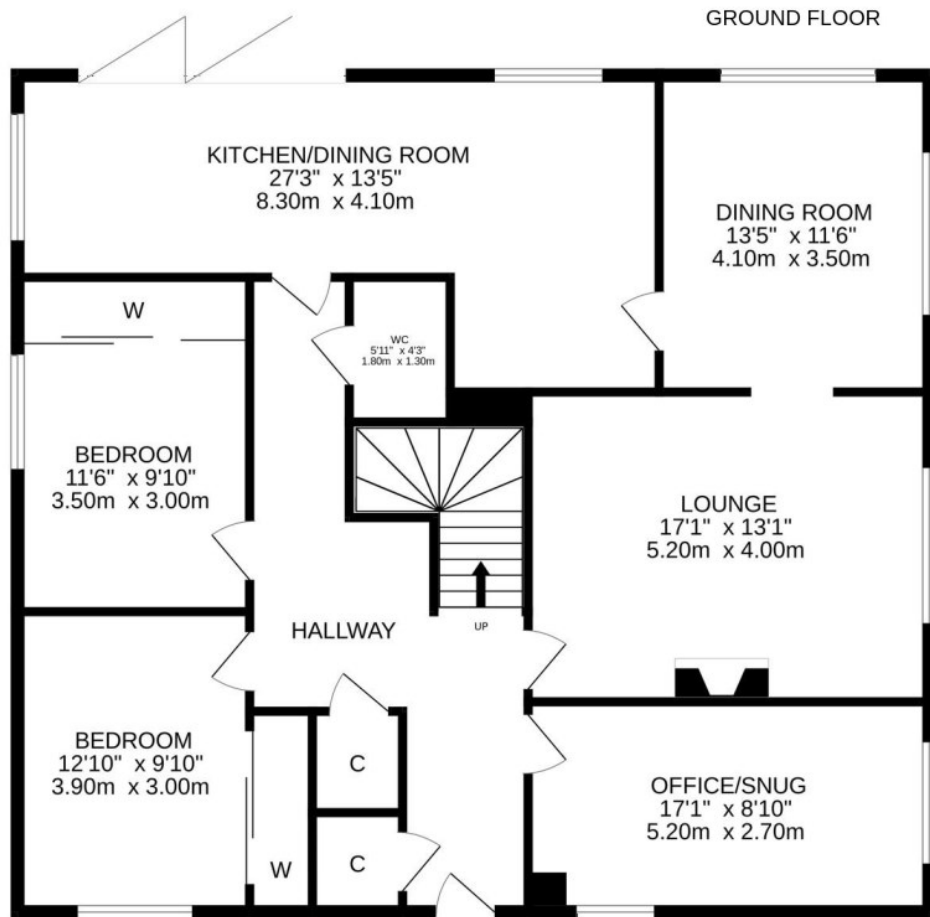










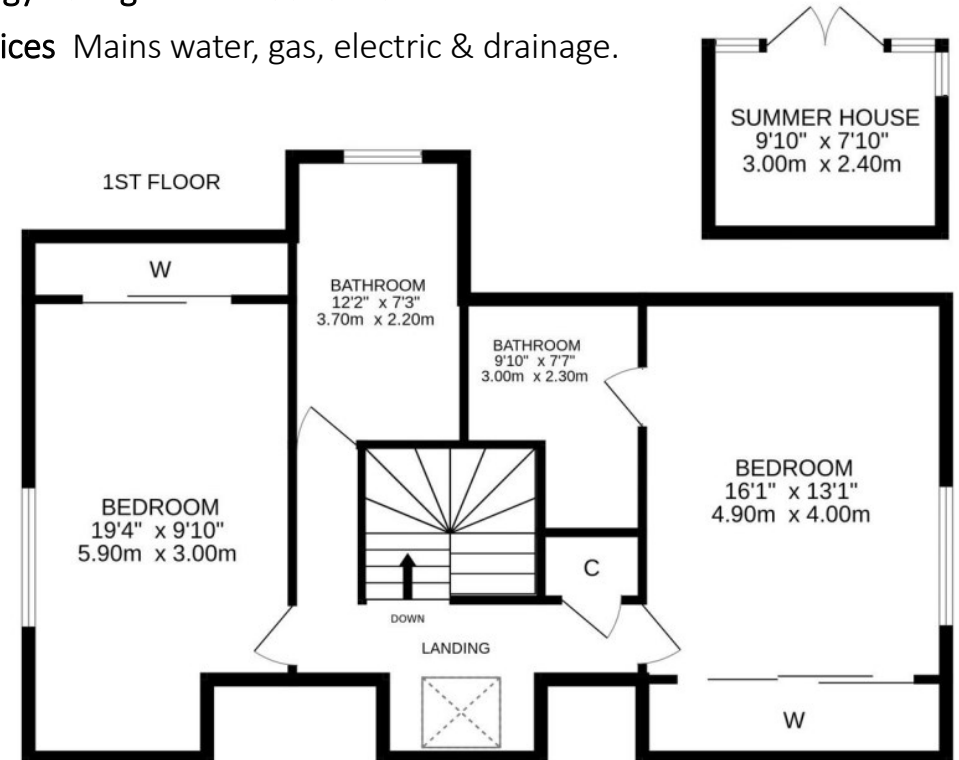


Viewing Strictly by appointment through Irving Geddes.

Video Tour <https://my.matterport.com/show/?m=DX4rKzJdE9d>

Energy Rating D Council Tax Band F

Services Mains water, gas, electric & drainage.



These particulars are believed to be correct, but their accuracy is not guaranteed and they do not form part of any contract. All measurements are approximate only.



Crieff

25 West High Street, PH7 4AU
Tel: 01764 653771

Comrie

1 Drummond Street, PH6 2DW
Tel: 01764 670325

Aberfeldy

6 The Square, PH15 2DD
Tel: 01887 822722