



JARLSHOF
DRUMMOND STREET, COMRIE, PH6 2DW

IrvingGeddes
W.S. • Solicitors • Estate Agents

JARLSHOF, DRUMMOND STREET, COMRIE, PH6 2DW

Irving Geddes are delighted to offer for sale this spacious main door maisonette apartment centrally located in the highly sought after Perthshire conservation village of Comrie.

Jarlshof is a property full of character with rarely available main door access, located on the main street through this ever popular village. The layout is set principally over two floors and comprises; ENTRANCE HALL with carpeted stairway to the upper floor. The first floor has a large LANDING, LOUNGE, KITCHEN, BEDROOM & contemporary BATHROOM. The upper floor has a W.C. and TWO further DOUBLE BED-ROOMS. The property is warmed by gas central heating & the windows are single or secondary glazed.

Jarlshof is a spacious apartment offered in move-in condition & enjoying a prime location in one of Perthshire's most sought after villages.

Video Tour <https://my.matterport.com/show/?m=uTmobApx2CT>

Energy Performance Rated 'E' **Council Tax** Band 'B'

Viewing Strictly by appointment through Irving Geddes - 01764 670325



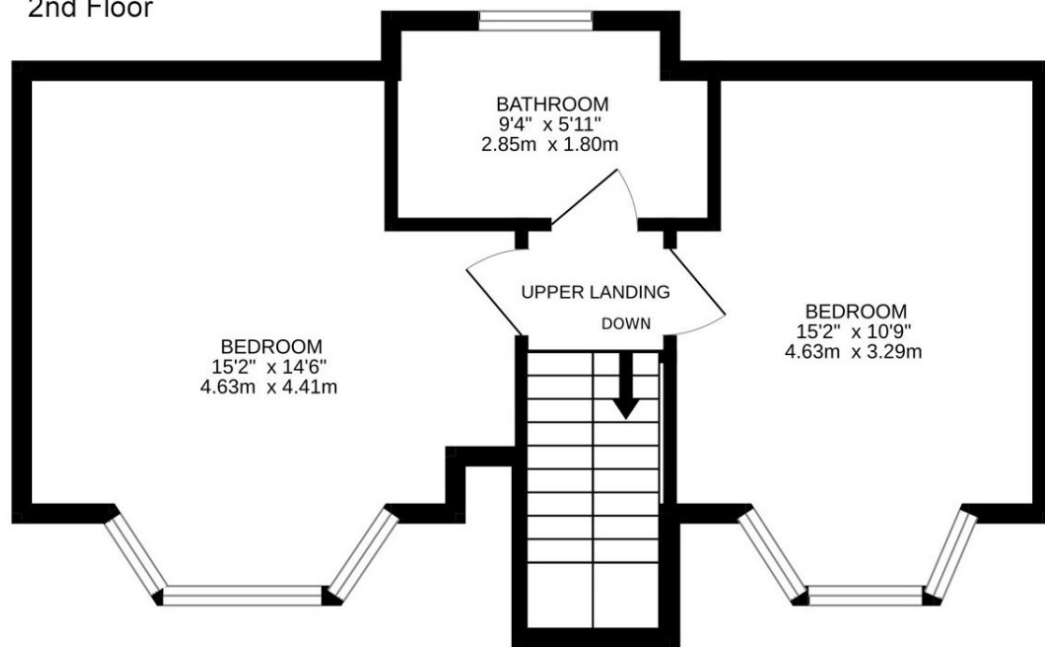




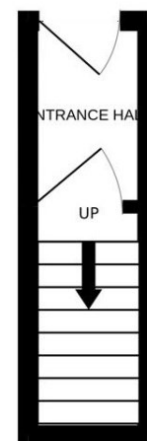
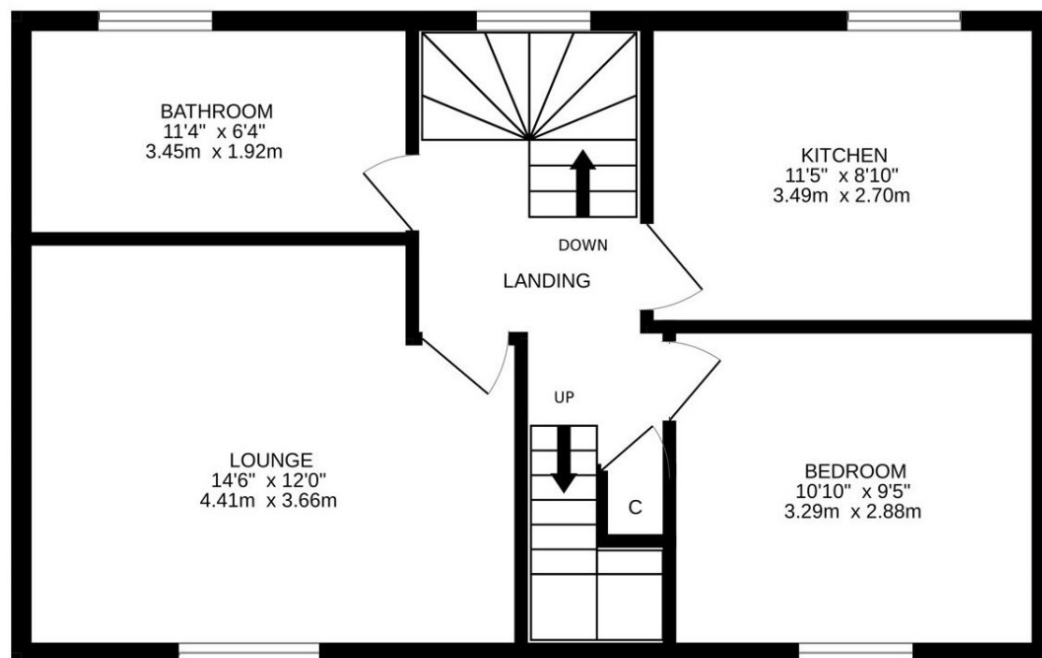


IrvingGeddes
W.S. • Solicitors • Estate Agents

2nd Floor



First Floor



Ground Floor

Comrie is a beautiful, lively village nestling on the banks of the River Earn, some 7mls west of Crieff & only 25mls from the Cities of Perth & Stirling. There are a number of independent shops, hotels, restaurants, and a medical centre and dentist. There is Primary schooling within the village and both private & public education available within Crieff. A haven for outdoor enthusiasts with river, woodland, hill & mountain walks surrounding the village, renowned mountain biking at 'Comrie Croft' & water sports/fishing at Loch Earn (6mls).

Irving Geddes
W.S. • Solicitors • Estate Agents