



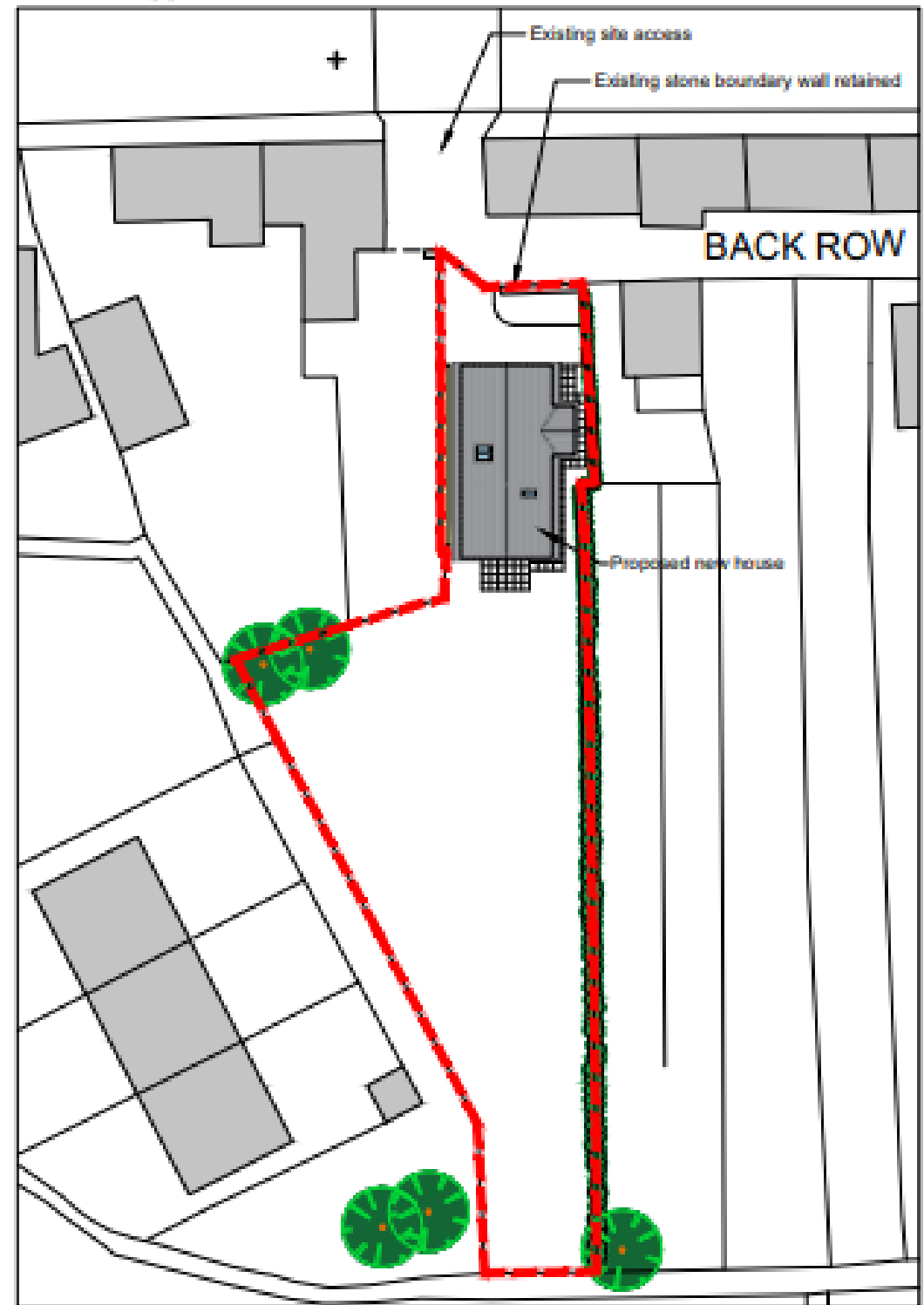
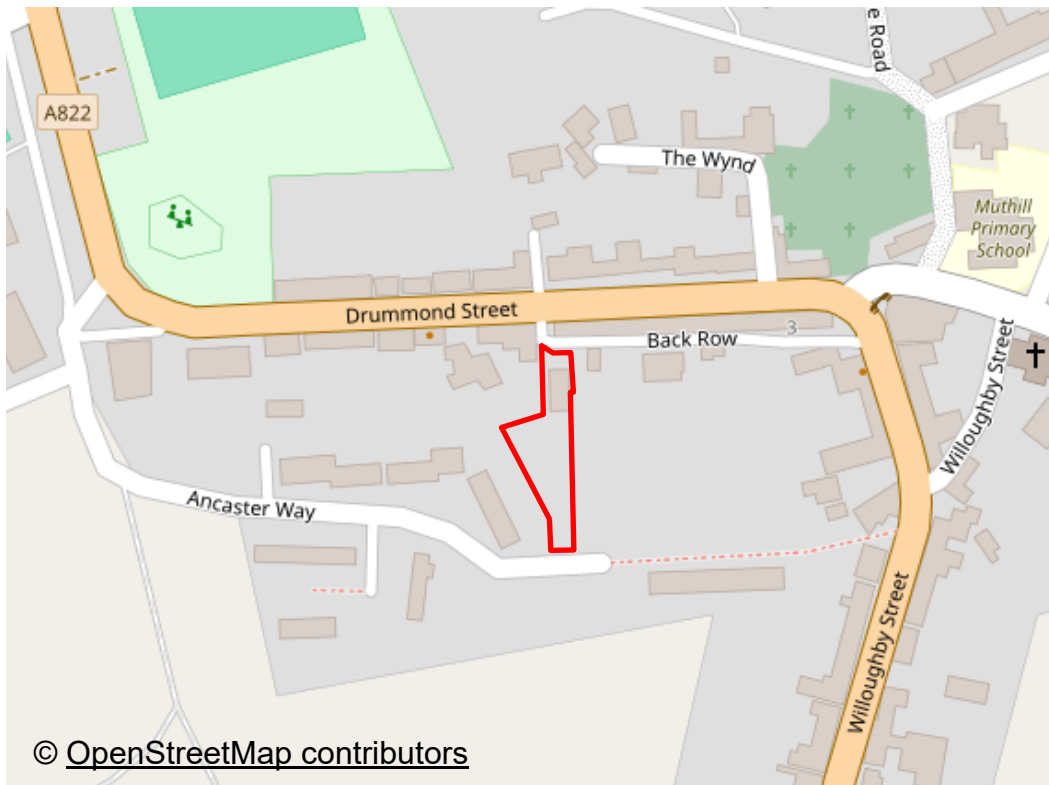
RESIDENTIAL PLOT
BACK ROW, MUTHILL, PH5 2AN

RESIDENTIAL PLOT, BACK ROW, MUTHILL, PH5 2AN

Enjoying a central location this generously sized residential plot extends to c.0.3 acres & has planning approval for the demolition of an existing workshop and the erection of a 3/4 bedroom villa. Boasting dual access from the front & rear, the level site has been cleared and currently houses a large stone workshop, occupying the position of the proposed villa. The well-conceived design by architects McLaren, Murdoch & Hamilton, is set over two floors with open-plan living located at the southern gable of the property, with patio doors overlooking the large south-facing garden ground.

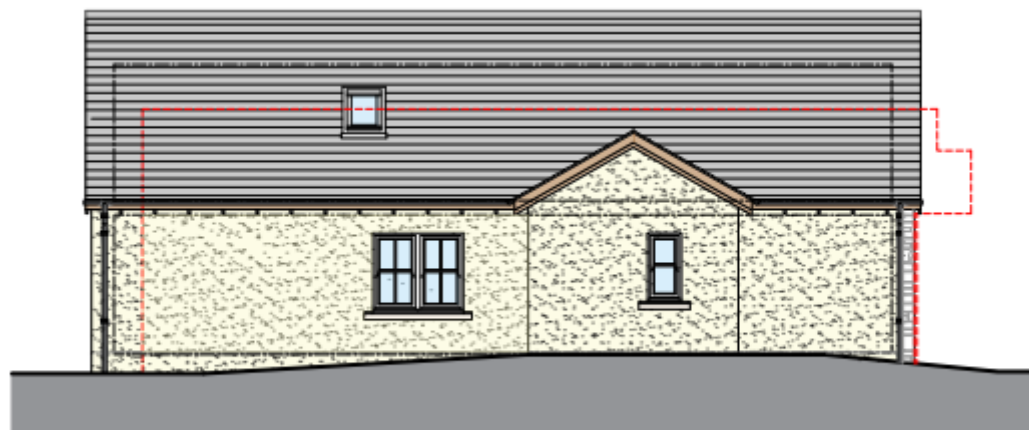
The charming Perthshire village of Muthill, situated only two miles from Strathearn's principal town of Crieff, is a popular small historic village with a garage/shop, pub, award winning restaurant with rooms, golf club & well-respected primary school.

Planning Link: <https://planningapps.pkc.gov.uk/online-applications/applicationDetails.do?activeTab=documents&keyVal=S429D2MKK8400>



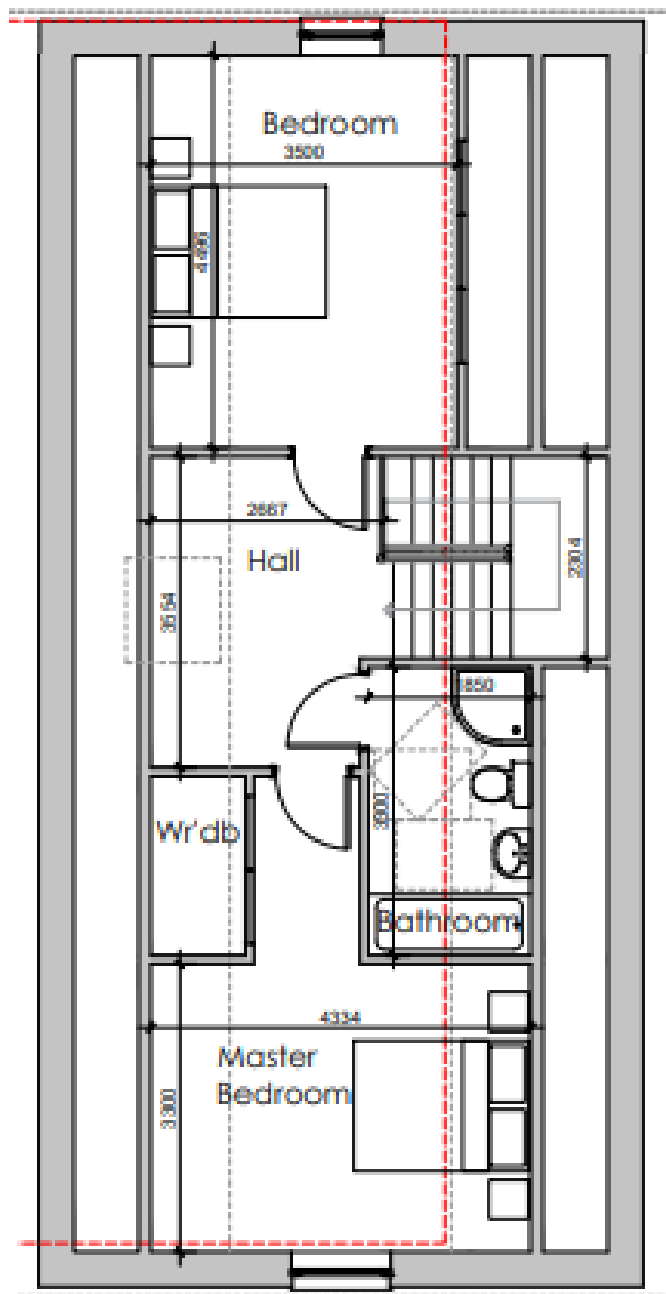
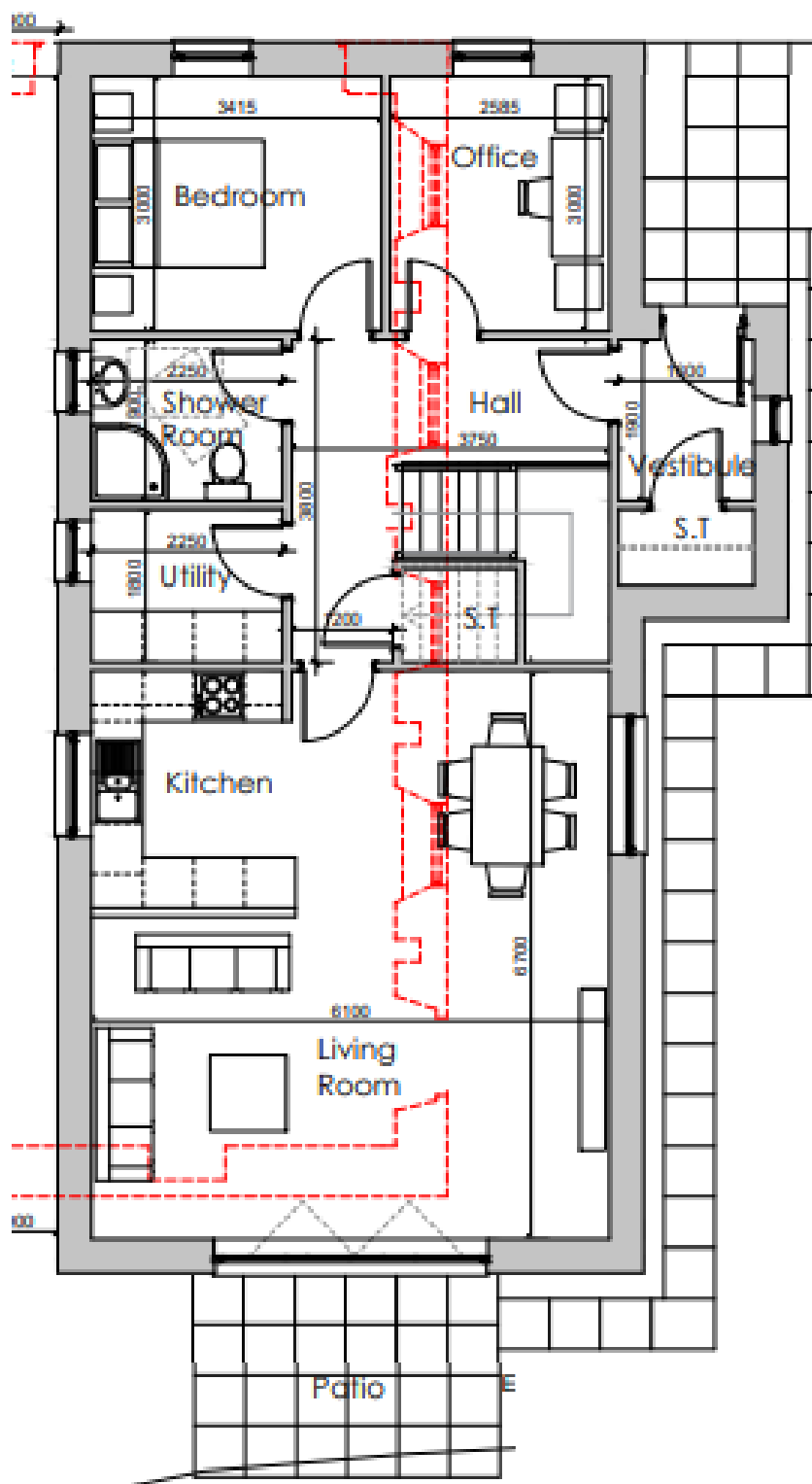


West Elevation

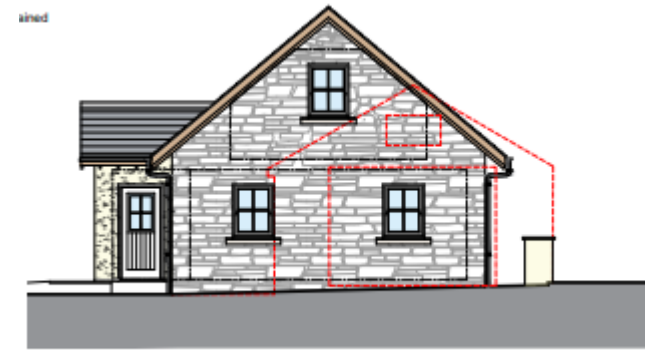


East Elevation

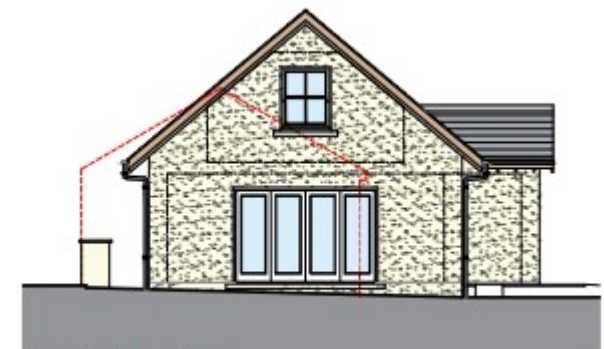




shed



North Elevation



South Elevation





These particulars are believed to be correct, but their accuracy is not guaranteed and they do not form part of any contract. All measurements are approximate only.



Aberfeldy

6 The Square, PH15 2DD
Tel: 01887 822722

Crieff

14 Comrie Street, PH7 4AZ
Tel: 01764 670325

Crieff

25 West High Street, PH7 4AU
Tel: 01764 653771

Comrie

1 Drummond Street, PH6 2DW
Tel: 01764 670325