

FLAT 1, WILLOWBANK
BURNSIDE, ABERFELDY, PH15 2AU



1 WILLOWBANK, BURNSIDE, ABERFELDY, PA15 2AU

Irving Geddes are delighted to offer for sale this recently decorated top floor flat enjoying a central yet quiet location within the bustling Highland town of Aberfeldy.

A spacious flat boasting an attractive outlook, located on the second (top) floor of a handsome detached period building accommodating six dwellings, the layout of flat 1 comprising HALL with two large storage cupboards, STUDY/BOX ROOM, modern BREAKFASTING KITCHEN, LOUNGE with open fire & a most pleasant aspect from the large dormer window, SHOWER ROOM and DOUBLE BEDROOM with built-in wardrobes. There are double glazed windows and electric heating.

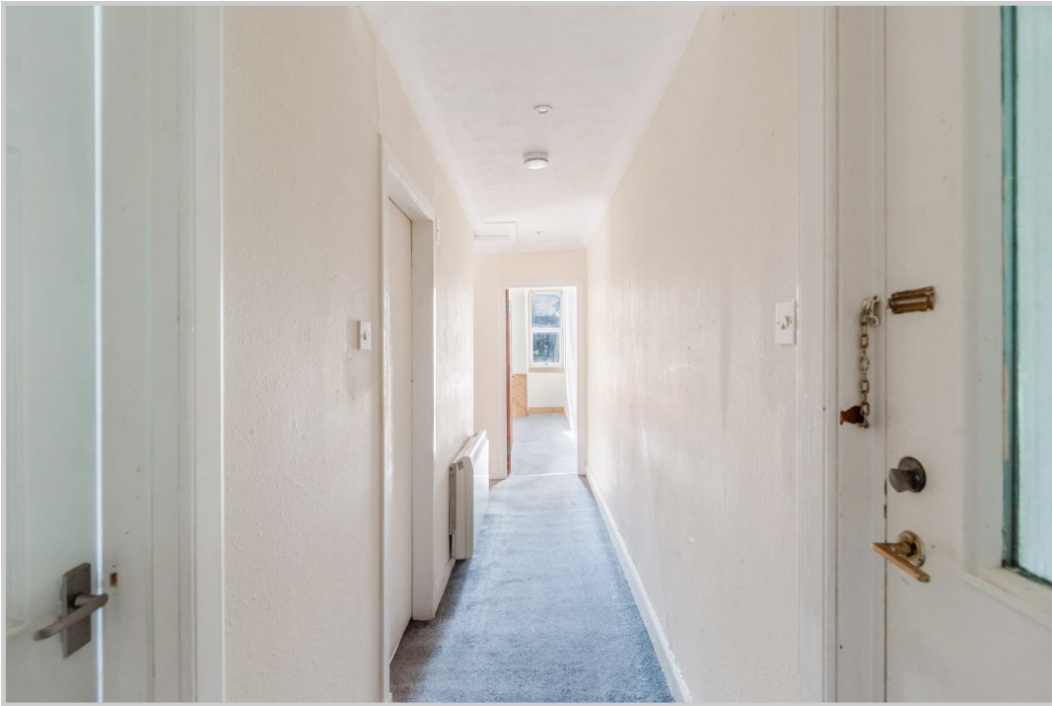
There is parking to the rear with unrestricted on-street parking at the front. The property has an area of private garden ground opposite, and timber and brick-built stores.

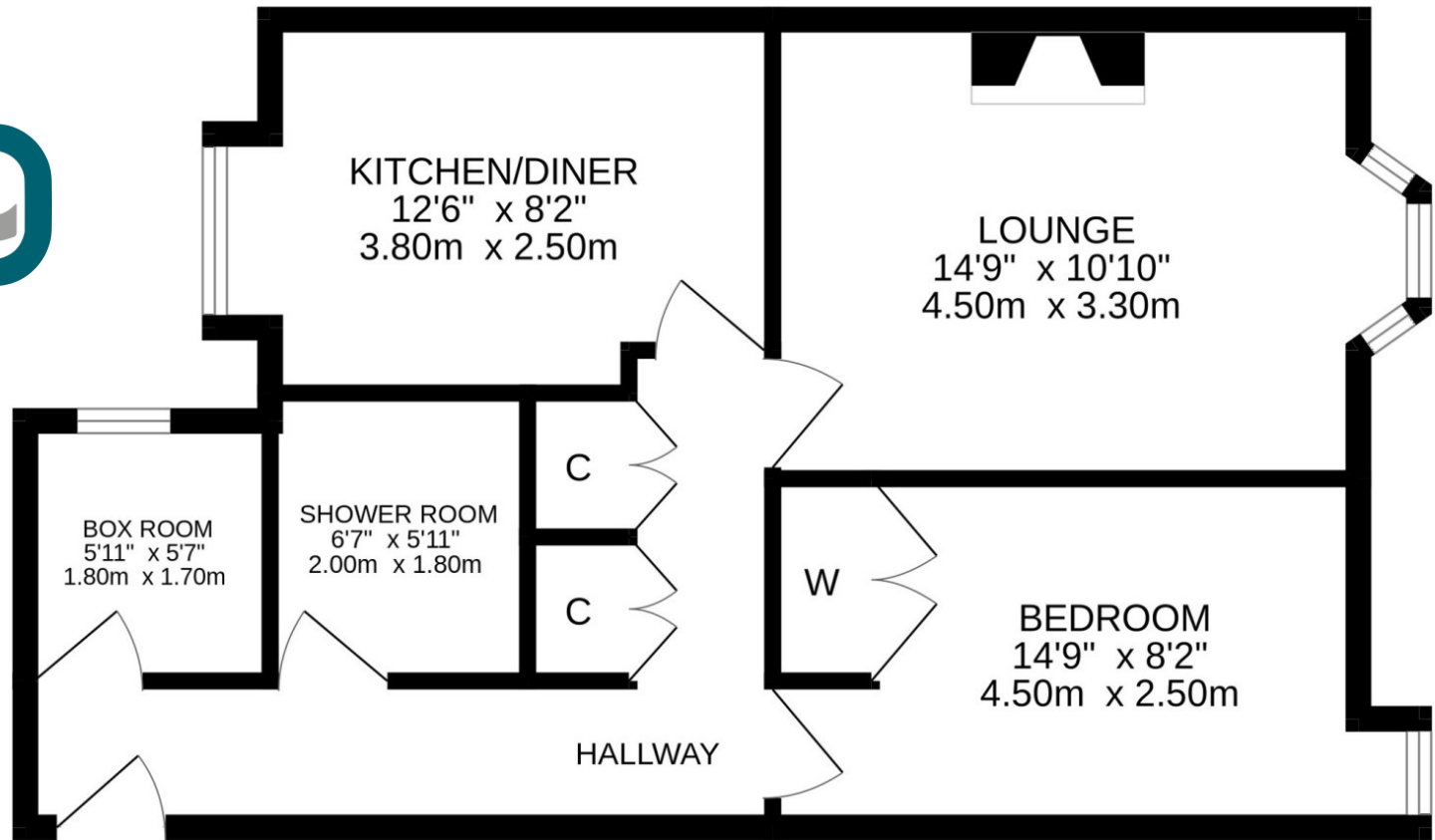
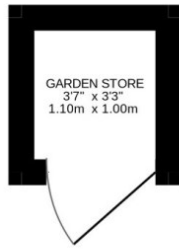
An attractive property boasting a great location, an ideal first time buy or investment, presented in move-in condition.











Willowbank is ideally located within easy walking distance to local amenities. The modern community campus offering infant to secondary schooling, library, swimming pool and sports facilities is a short distance away as are numerous independent shops, restaurants, hotels & cinema. Those interested in outdoor pursuits are well catered for with a large public park, cricket ground, tennis & bowls club, golf course & woodland walks. Loch Tay is 6miles away and there are numerous mountain walks within close proximity.

Video Walkthrough <https://my.matterport.com/show/?m=Vx2V8Uvjw9t> Energy Performance 'E' rated.

Viewing strictly by appointment through Irving Geddes on 01887 822722.

Irving Geddes
W.S. • Solicitors • Estate Agents



Crieff

25 West High Street, PH7 4AU
Tel: 01764 653771

Comrie

1 Drummond Street, PH6 2DW
Tel: 01764 670325

Aberfeldy

6 The Square, PH15 2DD
Tel: 01887 822722