

CAMBUSURICH LODGE

ARDEONAIG, KILLIN, FK21 8SU



CAMBUSURICH LODGE, ARDEONAIG, KILLIN, FK21 8SU

Irving Geddes are delighted to bring to the market this rarely available individual holiday lodge enjoying an elevated position overlooking Loch Tay. Set within stunning surroundings, adjacent to the Loch Lomond & Trossachs National Park, 5 miles from the bustling and picturesque village of Killin. Presented in move-in condition with a well-proportioned layout comprising; ENTRANCE HALL with storage and attic hatch, modern fully-fitted KITCHEN open to a large L-shaped LOUNGE/DINING ROOM, boasting a tremendous outlook across the loch, DOUBLE BEDROOM and BATHROOM with built-in storage.

The lodge is reached via a short private drive off the south Loch Tay road (forming part of the National Cycle Route 7) and enjoys adjacent parking. There is a timber shed, with timber decking surrounding the property, an extended area lying to the south side with planted beds, an ideal spot from which to enjoy the sun.

A unique and charming home for use as holiday accommodation only, offering the perfect base from which to explore one of Scotland's most scenic and accessible areas.

Video Tour <https://my.matterport.com/show/?m=JTqt96T7Lxo>

Viewing Strictly by appointment only through Irving Geddes.



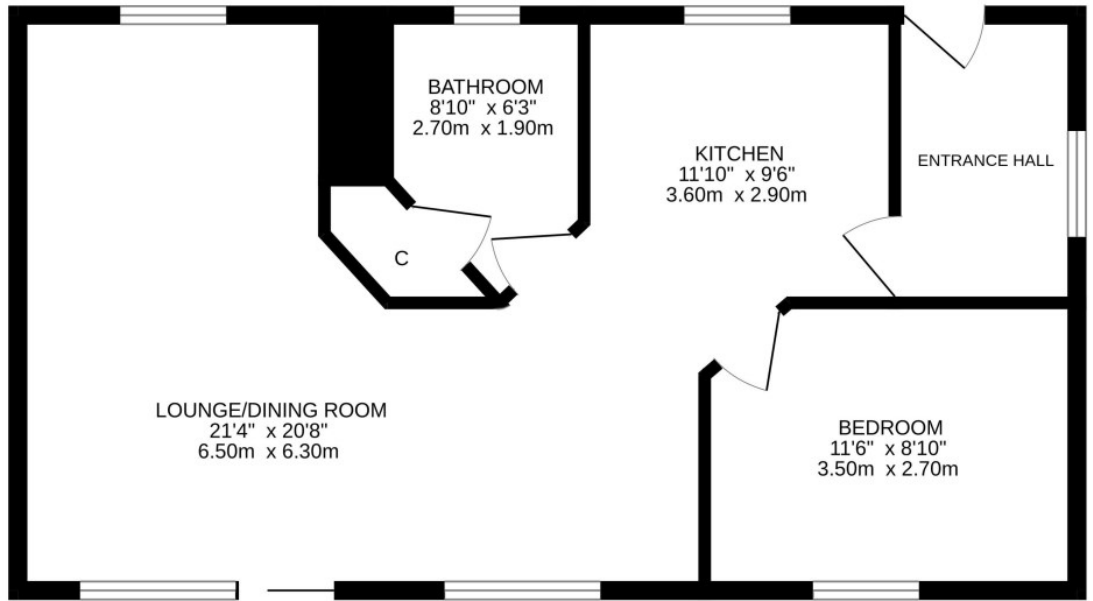
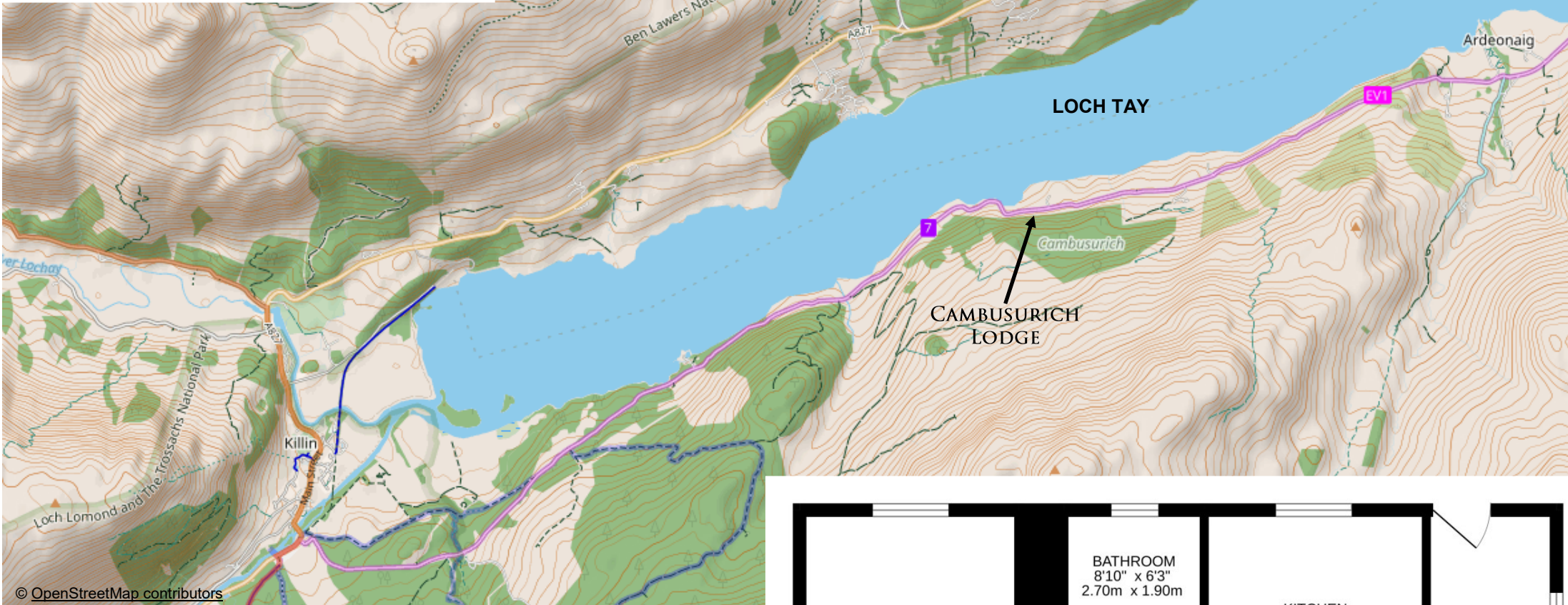












These particulars are believed to be correct, but their accuracy is not guaranteed and they do not form part of any contract. All measurements are approximate only.



Crieff
25 West High Street, PH7 4AU
Tel: 01764 653771

Comrie
1 Drummond Street, PH6 2DW
Tel: 01764 670325

Aberfeldy
6 The Square, PH15 2DD
Tel: 01887 822722