

NEW DWELLING-HOUSE
FEARNAN, ABERFELDY, PH15 2FE

IrvingGeddes
W.S. • Solicitors • Estate Agents





LivingGeddes
W.S. • Solicitors • Estate Agents

NEW VILLA, FEARNAN, ABERFELDY, PH15 2FE

We are delighted to offer for sale an exceptional 4 bedroom modern home set within beautiful surroundings, overlooking Loch Tay. Due for completion in Summer 2024 by AKG Homes, a local family run construction company, the property boasts a stunning generously-sized contemporary open plan layout, enviable elevated position with superb views along the Loch and valley, a 0.3acre south-facing plot, & opportunity for purchasers to work alongside AKG in creating their bespoke home. Accredited by NHBC, AKG have many years of experience in design and construction with a large portfolio of exceptional homes in the area, & buyer will have an opportunity to view a recently completed house.

The layout comprises a RECEPTION HALL with door to garage and stairs to upper level, fully fitted bespoke KITCHEN (Callum Walker Kitchens) set in the heart of the home, steps creating a stunning split-level DINING & LIVING ROOM/FAMILY area complete with vaulted ceiling, feature wood-burner & external doors to a paved terrace. There is a UTILITY ROOM & 3 DOUBLE BEDROOMS (2 EN-SUITE & the 3rd with 'Jack & Jill' access to the FAMILY BATHROOM). All bedrooms have built-in wardrobes, the master has external double doors to a further paved patio. The hall stair leads to a galleried landing & large 4th bedroom (with EN-SUITE) with large storage/loft area.

Externally the property will have spacious fully-enclosed garden grounds, a gravel drive & paths, ample private parking, large single garage with electric roller door, storage, bin & log stores, & paved patios. In addition, a strip of land (c.3m wide) leading from the main road up to & including Loch fore-shore may be available through separate negotiation.

A magnificent contemporary home built to the highest standards & enjoying a stunning outlook within one of Perthshire's most scenic yet accessible area. An energy efficient property with solar panels, air-source heat pump, under-floor heating and high levels of insulation. A fantastic opportunity for early buyers to choose their kitchen along with utility furniture, and work towards completing a fantastic family home.

The small village of Fearnan is situated only 3mils from the historic village of Kenmore, within an area of outstanding natural beauty and a haven for outdoor enthusiasts. Located at the end of Loch Tay, Kenmore is a conservation village offering much character. The town of Aberfeldy has a full range of services and lies some 6miles further to the east.









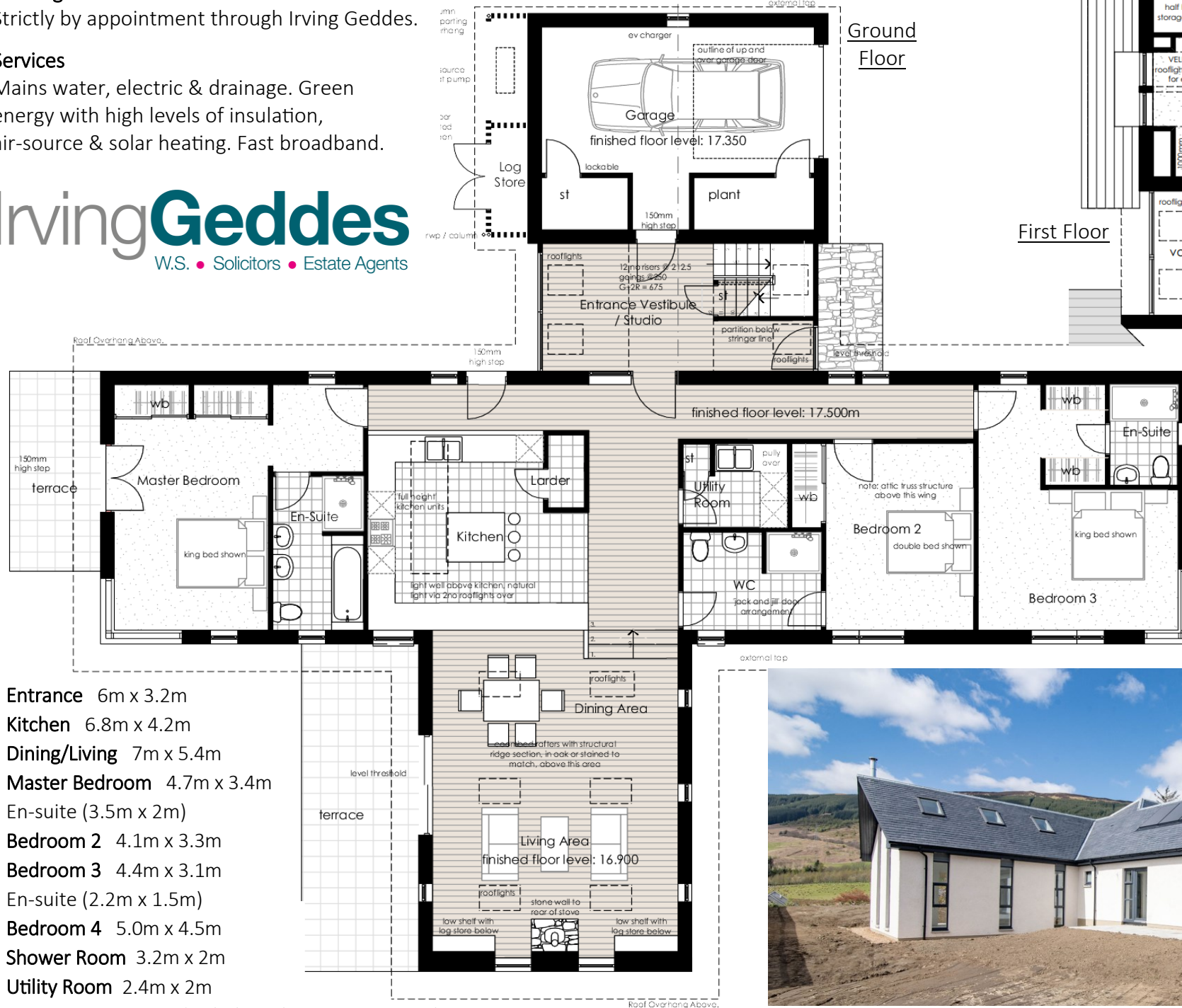
Viewing

Strictly by appointment through Irving Geddes.

Services

Mains water, electric & drainage. Green energy with high levels of insulation, air-source & solar heating. Fast broadband.

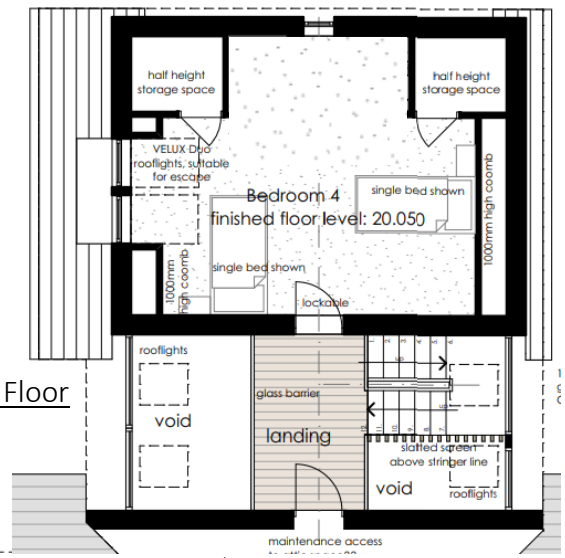
Irving Geddes
W.S. • Solicitors • Estate Agents



- Entrance** 6m x 3.2m
- Kitchen** 6.8m x 4.2m
- Dining/Living** 7m x 5.4m
- Master Bedroom** 4.7m x 3.4m
- En-suite** (3.5m x 2m)
- Bedroom 2** 4.1m x 3.3m
- Bedroom 3** 4.4m x 3.1m
- En-suite** (2.2m x 1.5m)
- Bedroom 4** 5.0m x 4.5m
- Shower Room** 3.2m x 2m
- Utility Room** 2.4m x 2m
- Garage** 6m x 4.4m (including plant room & store)

Ground Floor

First Floor



These particulars are believed to be correct, but their accuracy is not guaranteed and they do not form part of any contract.



Crieff

25 West High Street, PH7 4AU
Tel: 01764 653771

Comrie

1 Drummond Street, PH6 2DW
Tel: 01764 670325

Aberfeldy

6 The Square, PH15 2DD
Tel: 01887 822722