



1 Bellman House

Broughton-In-Furness, LA20 6DJ

Offers In The Region Of £132,500



1



1



1



D



1 Bellman House

Broughton-In-Furness, LA20 6DJ

Offers In The Region Of £132,500



We are delighted to present a rare opportunity to acquire this charming one-bedroom apartment, ideally situated in the very centre of the picturesque market village of Broughton-in-Furness. Nestled within the stunning landscape of the Lake District National Park, this property offers the perfect blend of village life and natural beauty—an ideal retreat for those seeking tranquillity with convenient access to local amenities.

The apartment is presented in excellent condition throughout, making it ready for immediate occupation. Whether you're a first-time buyer, looking for a holiday home, or searching for a buy-to-let investment, this well-maintained property provides a versatile and attractive option with no onward chain to complicate the process.

Don't miss your chance to own a slice of Lake District living in one of the area's most sought-after locations.

As you approach Bellman House, you're welcomed by a few steps leading to the communal entrance hallway. Apartment Number One is conveniently located on the ground floor.

Step through your private front door into the apartment's hallway, which provides access to all rooms.

The open-plan living, dining, and kitchen area offers enough space for a sofa and a small dining table. Two windows allow plenty of natural light to fill the room. The kitchen is fitted with a range of wood-style base and wall units, a single sink with mixer tap, an electric oven and hob, and a built-in fridge.

The bathroom features a white three-piece suite, including a WC, wash basin, and a bath with an overhead shower attachment. Cream tiles line both the walls and floor, giving the space a clean and neutral finish.

The double bedroom is bright and airy, with two windows, cream walls, and a grey fitted carpet.

Hallway

4'6" x 5'6" (1.375 x 1.697)

Lounge/kitchen

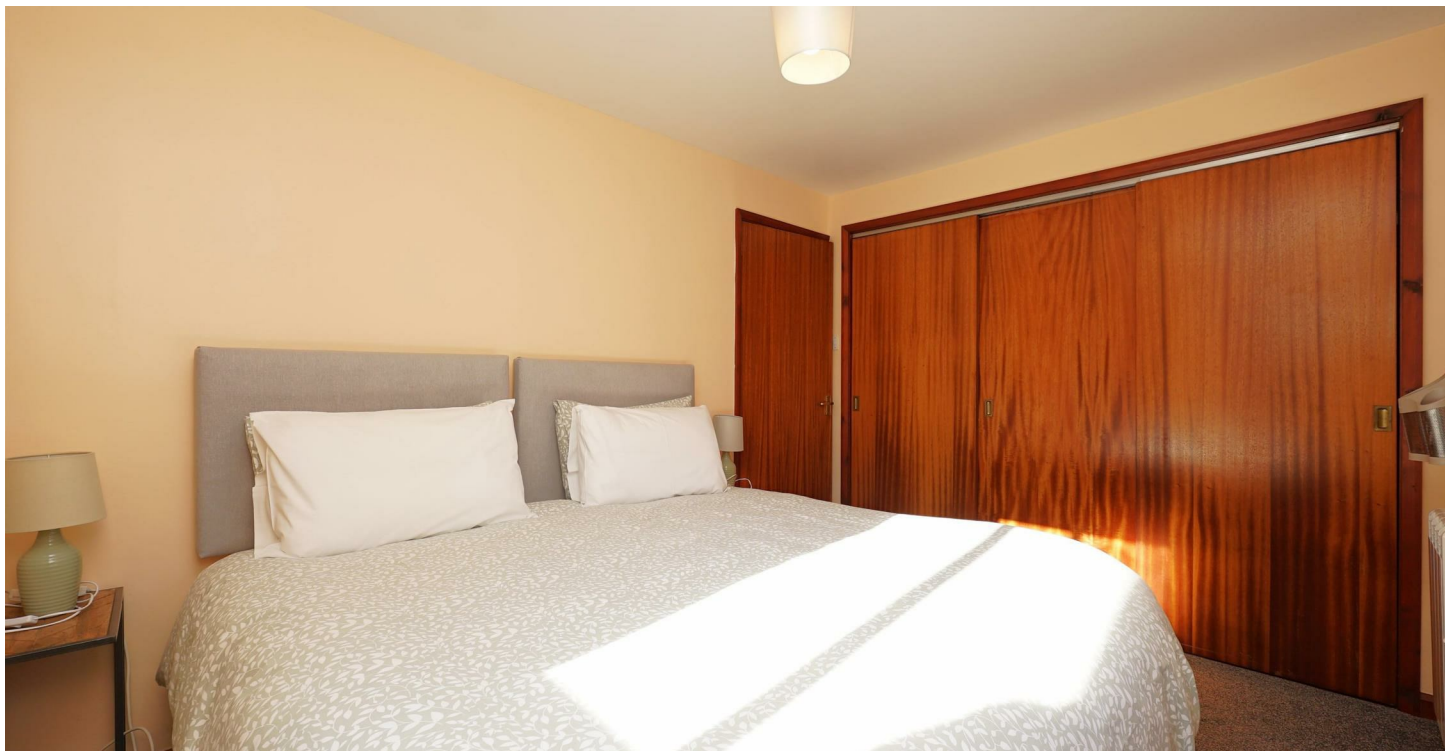
14'2" x 8'10" (4.335 x 2.707)

Bathroom

7'11" x 5'5" (2.415 x 1.675)

Bedroom

8'6" x 12'10" (2.595 x 3.917)



- One bedroom Apartment
- Village
- Open plan living/kitchen
- Council Tax Band A

- Sought after location
- Lake District National Park
- EPC D



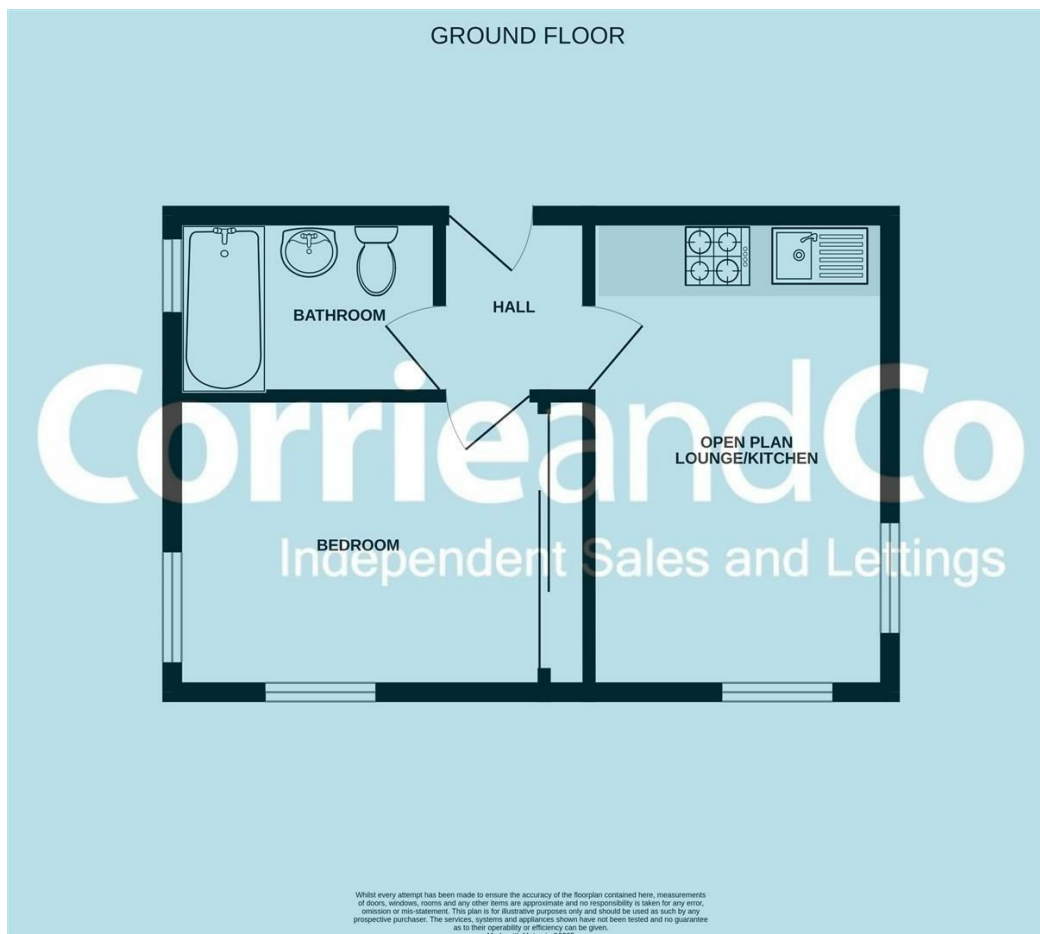
Road Map



Terrain Map



Floor Plan



Corrie and Co aim to sell your property, at the best possible price, in the shortest possible time. We have developed a clear marketing strategy, over many years, to ensure your property is exposed to all social media platforms, Rightmove, Zoopla and our own Corrie and Co website.

We also offer:

- Professional Photography
- Full promotion, throughout all our branches
- Experienced, qualified, friendly staff
- Full viewing service with feedback

To ensure your move is stress free, we can help with Mortgage advice. We work alongside local Solicitors, offering competitive conveyancing services.

We are local, family run business who are wholly independent which means we can recommend services to most suit your needs. Our aim is to provide quality advice and expertise at all times, so you can make an informed decision.

