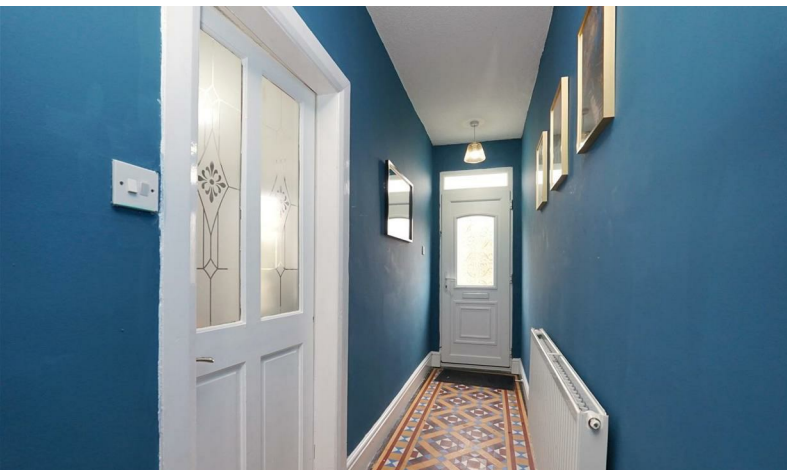




1 Bay View

Millom, LA18 5DF

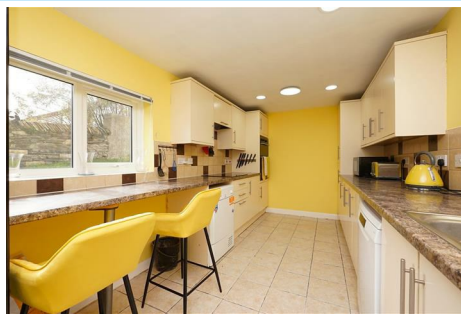
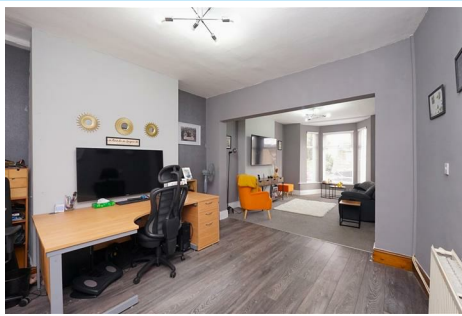
Offers In The Region Of £250,000



1 Bay View

Millom, LA18 5DF

Offers In The Region Of £250,000



Corrie and Co are excited to introduce this generously sized end-of-terrace house, ideally located on Bay View in Millom. This inviting home boasts a large open-plan living and dining area, perfect for family gatherings and entertaining guests. The generous kitchen provides ample space for families. The property features five double bedrooms (with most providing lovely outlooks), offering plenty of room for a growing family or accommodating guests. The four-piece family bathroom is well-appointed, ensuring comfort for all. Outside, you'll find a charming front forecourt and a rear garden that has been enhanced with a new decking area, ideal for outdoor relaxation. A large shed in the garden provides additional storage space. The property benefits from its proximity to the town center, which is just a few minutes' walk away, offering easy access to local amenities and services. This home is a perfect blend of space, convenience, and modern features, making it a wonderful opportunity for prospective buyers.

As you approach the property, a beautifully maintained courtyard welcomes you, leading up to the main entrance. Upon stepping inside, you are greeted by a hallway showcasing original Victorian tiles and blue-painted walls. Through the internal door, you enter a spacious, open-plan living and dining area. The living space is finished in an elegant grey palette, with a large bay window that fills the room with natural light. The living area is carpeted in grey, while the dining side features grey wooden flooring.

Adjacent to this space is a generously sized kitchen, fitted with cream-colored base and wall units, along with a breakfast bar. It includes a chrome single sink unit, integrated oven, grill, and electric hob. The kitchen benefits from two large windows, one on each side, allowing an abundance of natural light.

Moving up to the first floor, you'll find two bedrooms and a family bathroom, complete with a corner bath, separate shower, WC, and wash basin. The bathroom features a cream-tiled splashback and blue-painted walls.

On the second floor, there are three additional well-proportioned bedrooms, with the middle room offering loft access via a fixed ladder.

Outside, the rear garden offers a mix of a newly decked area and a patio area, perfect for relaxation or entertaining. A large shed provides extra storage space within the garden.

Entrance Hall

16'11" x 3'4" (5.158 x 1.025)

Living Room

15'1" x 11'4" (4.602 x 3.474)

Dining Room

13'1" x 11'7" (4.013 x 3.549)

Kitchen

18'8" x 8'5" (5.690 x 2.578)

Bedroom One

15'4" x 15'2" (4.675 x 4.637)

Bedroom Two

13'3" x 9'2" (4.064 x 2.812)

Bedroom Three

13'3" x 9'3" (4.051 x 2.832)

Bedroom Four

15'5" x 12'8" (4.706 x 3.871)

Bedroom Five

18'8" x 8'8" (5.694 x 2.643)

Bathroom

18'6" x 8'7" (5.639 x 2.628)

Stairway

13'5" x 5'8" (4.097 x 1.730)

Large shed

14'5" x 5'9" (4.400 x 1.761)



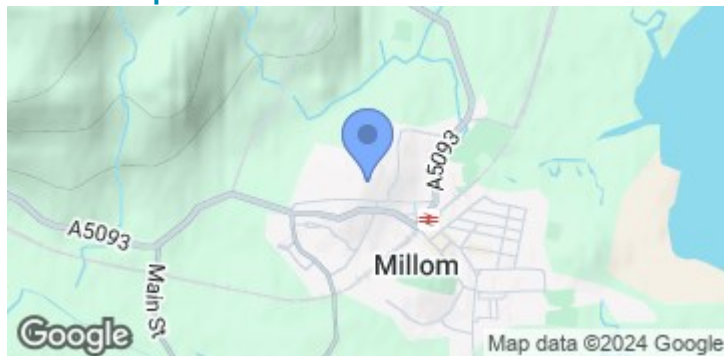
- End terraced - Three storey property
- Good size rooms throughout
- Four-piece family bathroom
- New Decking to the rear
- Council Tax Band - B
- Five bedrooms
- Garden to the rear
- New UPVC double glazed front door
- Partial new UPVC double glazed windows
- EPC D



Road Map



Terrain Map



Floor Plan

Corrie and Co aim to sell your property, at the best possible price, in the shortest possible time. We have developed a clear marketing strategy, over many years, to ensure your property is exposed to all social media platforms, Rightmove, Zoopla and our own Corrie and Co website.

We also offer:

- Professional Photography
- Full promotion, throughout all our branches
- Experienced, qualified, friendly staff
- Full viewing service with feedback

To ensure your move is stress free, we can help with Mortgage advice. We work alongside local Solicitors, offering competitive conveyancing services.

We are local, family run business who are wholly independent which means we can recommend services to most suit your needs. Our aim is to provide quality advice and expertise at all times, so you can make an informed decision.

