

CorrieandCo

INDEPENDENT SALES & LETTING AGENTS



4 Sea View

Millom, LA18 4ER

Offers In The Region Of £200,000



4 Sea View

Millom, LA18 4ER

Offers In The Region Of £200,000



Welcome to this charming terraced house in the picturesque location of Sea View, Haverigg. This property boasts not only stunning sea views but also a coastal vibe that will make you feel like you're on a permanent holiday.

This property is truly turn key, meaning you can move in and start enjoying the coastal lifestyle right away. Don't miss out on the opportunity to make this beautiful house your new home...

The open aspects, make for a super approach to this forecourted home. On entering the home, the neutral decorated hallway, leads into the lounge and offers access to stairs.

The lounge and dining room are light and modern, with pale walls and grey new carpets. Leading into the brand new kitchen, you'll find a good range of base units in a matt grey colour and white marble effect worksurfaces with integral appliances and a breakfast bar. Modern down lights and Velux offer a modern feel. From the kitchen is access to the ground floor bathroom, offering marble effect clad walls, three piece suite with complimentary green vanity sink unit and cupboard.

The stairs lead to an open landing with access to three bedrooms, all with new decor and carpets, Pleasant spacious and light, the front bedroom with views.

Externally, the rear yard is light and spacious, providing versatile usage for outside living and socialising.

Entrance Hall

15'7" x 3'3" (4.756 x 0.995)

Reception

13'1" x 10'4" (4.002 x 3.166)

Dining Room

11'6" x 10'1" (3.522 x 3.081)

Kitchen-Breakfast Area

13'6" x 8'8" (4.126 x 2.651)

Landing

13'1" x 5'0" (4.009 x 1.539)

Bedroom One

14'0" x 12'5" (4.269 x 3.792)

Bedroom Two

13'3" x 8'6" (4.046 x 2.608)

Bedroom Three

8'6" x 7'4" (2.593 x 2.245)

Family Bathroom

6'10" x 6'5" (2.084 x 1.956)

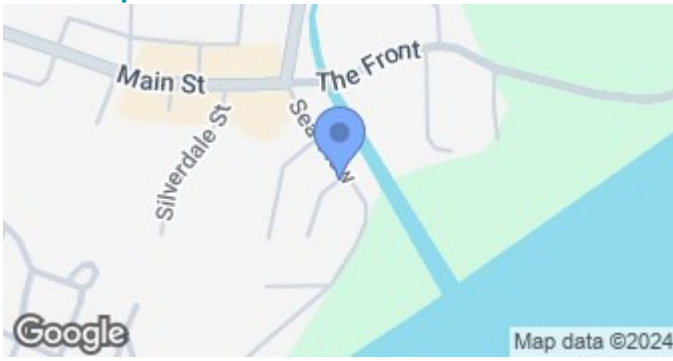


- Coastal location with VIEWS
- Modern kitchen
- EPC - D

- Immaculate throughout
- Lovely Rear Yard
- Council Tax A



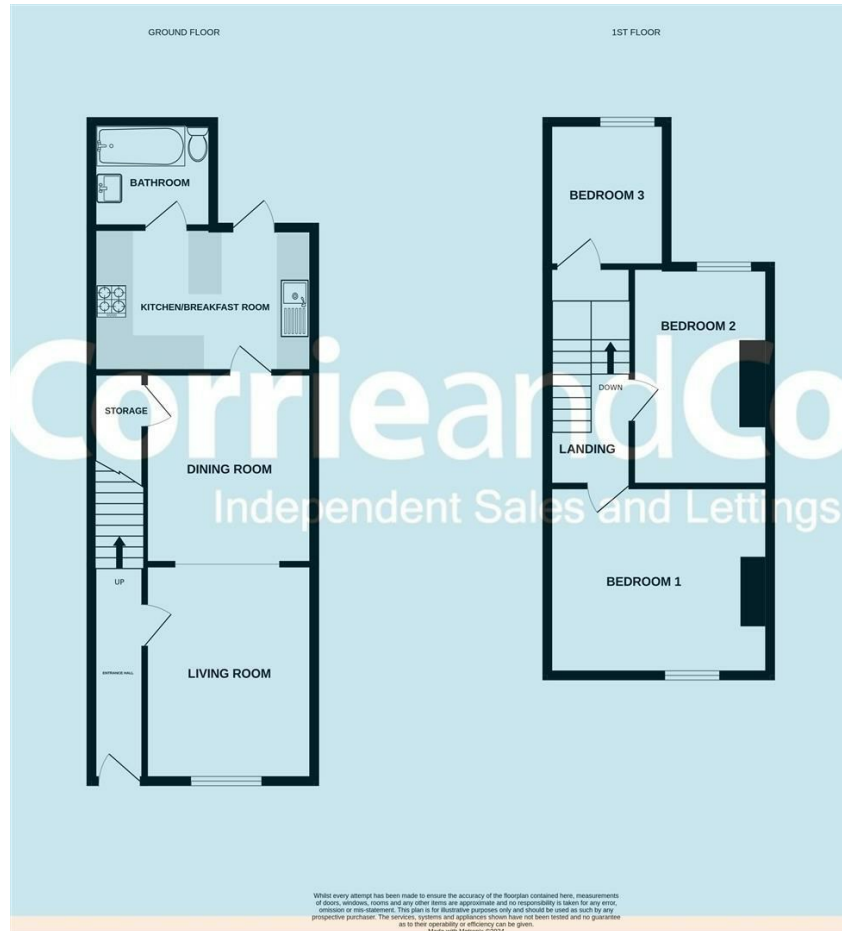
Road Map



Terrain Map



Floor Plan



Whilst every attempt has been made to ensure the accuracy of the floorplan contained herein, measurements of floors, windows, rooms and any other items are approximate and no responsibility is taken for any error, omission or mis-statement. This plan is for illustrative purposes only and should be used as such by any prospective purchaser. The services, systems and appliances shown have not been tested and no guarantee as to their operability or efficiency can be given. Made with Mergekit (2024).

Corrie and Co aim to sell your property, at the best possible price, in the shortest possible time. We have developed a clear marketing strategy, over many years, to ensure your property is exposed to all social media platforms, Rightmove, Zoopla and our own Corrie and Co website.

We also offer:

- Professional Photography
- Full promotion, throughout all our branches
- Experienced, qualified, friendly staff
- Full viewing service with feedback

To ensure your move is stress free, we can help with Mortgage advice. We work alongside local Solicitors, offering competitive conveyancing services.

We are local, family run business who are wholly independent which means we can recommend services to most suit your needs. Our aim is to provide quality advice and expertise at all times, so you can make an informed decision.

