



5 Green Street

Millom, LA18 4HL

Offers In The Region Of £195,000



2



1



1



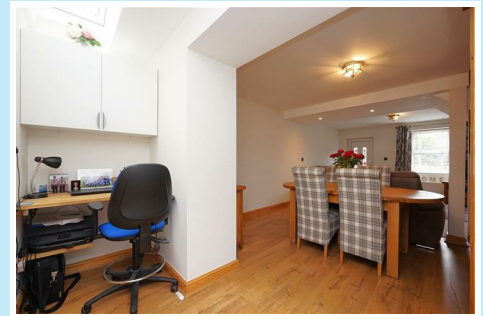
C



5 Green Street

Millom, LA18 4HL

Offers In The Region Of £195,000



This beautifully presented two-bedroom mid-terrace home is situated on a tranquil residential street in Haverigg, a charming seaside village. Residents enjoy easy access to a plethora of local amenities essential for family living, including a nearby school, post office, shop, pubs, and a beach cafe. Additionally, the property benefits from its close proximity to the beach, offering residents the opportunity for seaside strolls and relaxation mere moments from their doorstep.

The home itself has undergone modernization throughout, ensuring a contemporary and comfortable living environment for its occupants. With its desirable location and updated interior, this property presents an inviting opportunity for those seeking a peaceful coastal lifestyle combined with modern conveniences.

This mid-terrace home offers a welcoming entrance directly from the front street into an open plan lounge, featuring an electric log burner effect stove that adds a cozy ambiance. The open plan lounge/dining room includes ample space for a study area, making it versatile for various living arrangements. An oak open staircase with glass balustrades adds a touch of elegance to the interior.

The modern fitted kitchen is a highlight, featuring navy wall and base units, Victorian style grey floor tiles, and butcher block work surfaces, creating a stylish and functional space for culinary endeavours. A light-filled sunroom provides a tranquil retreat, with patio doors opening onto a larger-than-expected garden. The garden features a combination of lawned areas, a patio, and a decked pergola-covered seating area, perfect for outdoor entertaining or relaxation. On the first floor, this charming mid-terrace home offers two double bedrooms, providing comfortable and private spaces for relaxation and rest. One of the bedrooms conveniently features an en-suite WC, adding an extra level of convenience and privacy for occupants. Completing the property is a shower room with modern fixtures. This layout is ideal for accommodating a family or guests, ensuring everyone has their own space and facilities. This property presents an ideal family home, combining comfort, style, and functionality.

Living Room

13'2" x 12'8" (4.017 x 3.874)

Dining Room

12'8" x 8'7" (3.877 x 2.632)

Kitchen

12'10" x 9'1" (3.929 x 2.788)

Study

3'3" x 9'1" (1.016 x 2.789)

Sun Room

7'1" x 8'7" (2.172 x 2.625)

Bedroom One

12'3" x 13'0" (3.740 x 3.976)

WC

2'8" x 4'2" (0.829 x 1.290)

Bedroom Two

9'2" x 16'5" (2.813 x 5.027)

Shower Room

5'6" x 8'11" (1.687 x 2.729)

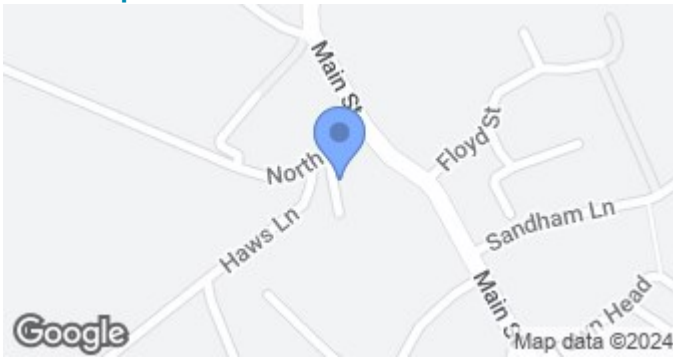


- Seaside Village Location
 - Sun Room
 - Study Area
 - EPC C
 - Open Living Area

- Two Double Bedrooms (one en-suite)
 - Large Garden
 - Council Tax A
 - Turn Key Property
 - Modern Kitchen



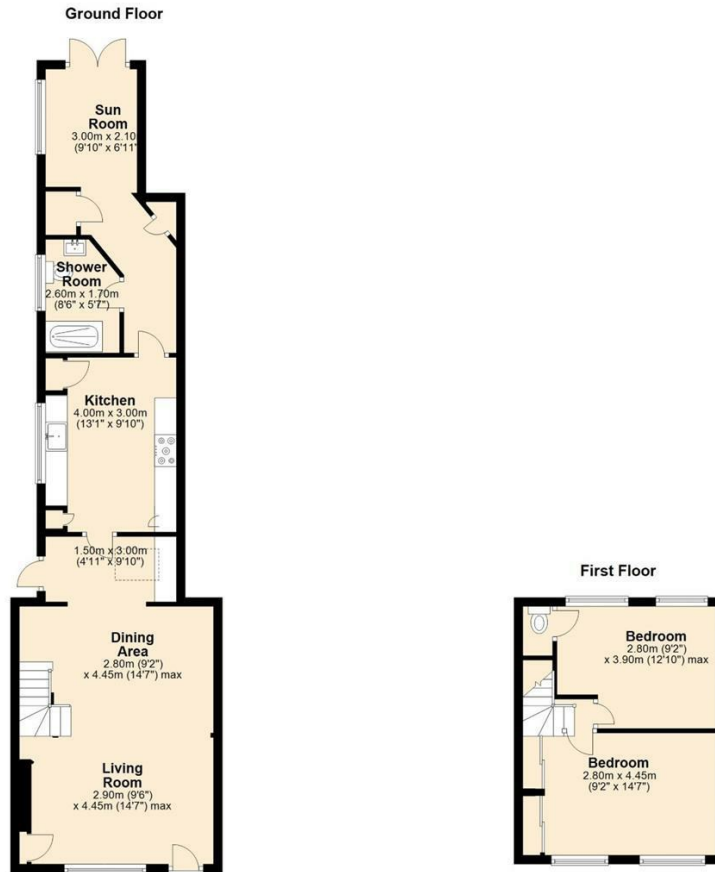
Road Map



Terrain Map



Floor Plan



5 GREEN STREET, MILLOM

Corrie and Co aim to sell your property, at the best possible price, in the shortest possible time. We have developed a clear marketing strategy, over many years, to ensure your property is exposed to all social media platforms, Rightmove, Zoopla and our own Corrie and Co website.

We also offer:

- Professional Photography
- Full promotion, throughout all our branches
- Experienced, qualified, friendly staff
- Full viewing service with feedback

To ensure your move is stress free, we can help with Mortgage advice. We work alongside local Solicitors, offering competitive conveyancing services.

We are local, family run business who are wholly independent which means we can recommend services to most suit your needs. Our aim is to provide quality advice and expertise at all times, so you can make an informed decision.

