

CorrieandCo

INDEPENDENT SALES & LETTING AGENTS



79 Market Street

Millom, LA18 4AJ

Offers In The Region Of £119,000



2



1



1



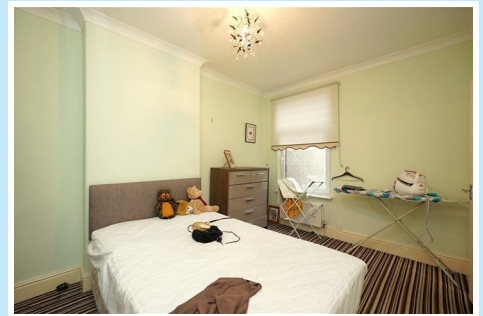
D



79 Market Street

Millom, LA18 4AJ

Offers In The Region Of £119,000



This exquisitely presented two-bedroom mid-terraced home with attic room, is not just in proximity to the town centre—it's a perfect match for a variety of homeowners. Just a stone's throw to local amenities, it is ideal for a first-time buyer, a couple or a growing family seeking a place to call their own.

Each aspect of the home, from its well maintained interiors to its private larger than average backyard, is tailored to accommodate the dreams and aspirations of those looking to begin a new chapter. Call our Millom office to arrange a viewing.

Our splendidly presented two-bedroom mid-terrace home, ideally situated in a prime town centre location.

Step into this home through a fore courted area leading into a lobby way and vestibule, setting the stage for an inviting home.

A good-sized, open living area awaits, offering ample space for relaxation and quality family time. It's the perfect blend of functionality and comfort, creating a warm and inviting space for both hosting and unwinding.

Culinary adventures begin in the modern fitted kitchen, complete with sleek finishes. This seamlessly transitions into a cozy breakfast area, making morning routines a delight. Escape to your private oasis in the rear yard, a serene space for outdoor relaxation.

Ascend the staircase to discover two comfortably sized bedrooms and a contemporary shower room. The charm doesn't end here; an additional converted attic room with its staircase offers a versatile space, perfect as a home office, playroom, or creative studio.

Entrance Hall

3'7" x 14'11" (1.11 x 4.552)

Dining Room

13'10" x 11'9" (4.221 x 3.600)

Living Room

11'0" x 11'5" (3.354 x 3.495)

Kitchen

7'10" x 15'1" (2.388 x 4.614)

Landing

13'10" x 5'4" (4.234 x 1.637)

Bedroom One

11'1" x 15'1" (3.400 x 4.606)

Bedroom Two

9'7" x 13'9" (2.941 x 4.204)

Bathroom

8'4" x 8'9" (2.561 x 2.682)

Attic Room

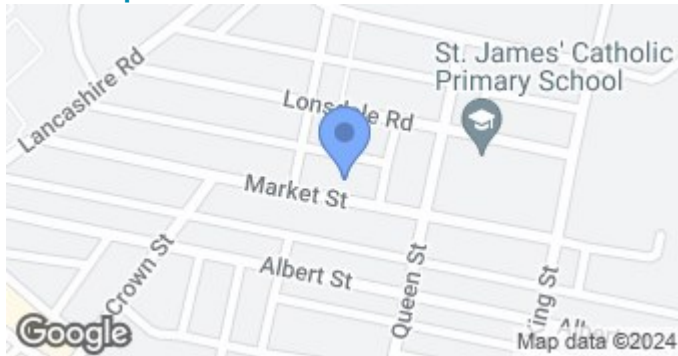
14'8" x 15'3" (4.493 x 4.655)



- Two Bedrooms
- Ideal First Time Buyer Home
 - ECP D
- Excellently Presented
- Attic Room
- Rear Yard
- Council Tax A



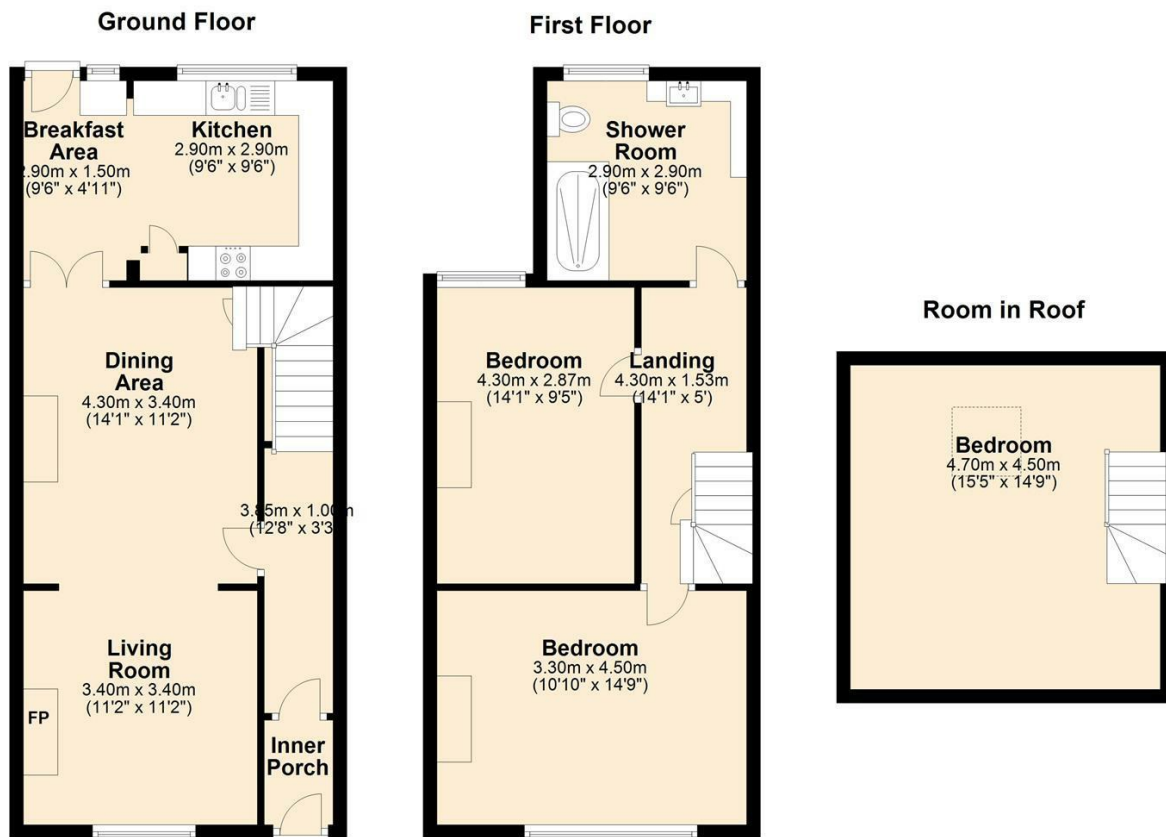
Road Map



Terrain Map



Floor Plan



79 market street, Millom

Corrie and Co aim to sell your property, at the best possible price, in the shortest possible time. We have developed a clear marketing strategy, over many years, to ensure your property is exposed to all social media platforms, Rightmove, Zoopla and our own Corrie and Co website.

We also offer:

- Professional Photography
- Full promotion, throughout all our branches
- Experienced, qualified, friendly staff
- Full viewing service with feedback

To ensure your move is stress free, we can help with Mortgage advice. We work alongside local Solicitors, offering competitive conveyancing services.

We are local, family run business who are wholly independent which means we can recommend services to most suit your needs. Our aim is to provide quality advice and expertise at all times, so you can make an informed decision.

