



2 Caton Street

Haverigg Millom, LA18 4HE

Offers In The Region Of £175,000



2



1



1



E



2 Caton Street

Haverigg Millom, LA18 4HE

Offers In The Region Of £175,000



This two-bedroom end terrace home in the seaside village of Haverigg offers off-road parking, a garage, and generous gardens, making it an ideal choice for a couple or small family. Its proximity to the main street of Haverigg, within walking distance to village shops, pubs, a beach café, and schools, adds to its appeal. A charming and convenient living space in a desirable location. Call our Millom office to arrange a viewing.

Nestled just off the Main Street of Haverigg, this delightful property offers the perfect blend of comfort and convenience for families or couples seeking a tranquil retreat. Boasting a thoughtful layout and an array of charming features, this home is poised to welcome its new occupants with open arms.

The well-maintained front garden leads to a secure garage and additional off-road parking, ensuring ample space for your vehicles and guests.

As you step inside, the warm and welcoming living room greets you, seamlessly flowing into an open-plan kitchen and dining area. This heart of the home is perfect for engaging conversations, culinary adventures, and creating memorable moments together.

The well-appointed ground floor shower room combines functionality with modern aesthetics, featuring a walk-in shower, sleek fixtures, and clean lines – all designed for your convenience and comfort.

Ascend the open staircase to discover two generously sized double bedrooms. These sanctuaries provide serene spaces for restful nights and quiet mornings, each room bathed in natural light and offering views of the surroundings.

The rear garden is a true highlight, presenting a vast lawn area framed by mature trees and shrubs. Whether you're a gardening enthusiast or seek a safe play area for children, this garden caters to all. With room for a greenhouse allowing you to cultivate your green thumb and enjoy the fruits of your labour.

Tucked away in a serene spot, this home promises a peaceful living environment away from the hustle and bustle, yet remains conveniently connected to local amenities.

This property is perfectly suited to families or couples looking for a blend of comfort and tranquillity. With its spacious living areas, comfortable bedrooms, and expansive outdoor space, it offers a wonderful setting for making lasting memories.

Porch

5'9" x 3'2" (1.760 x 0.972)

Living Room

19'10" x 7'5" (6.046 x 2.283)

Kitchen

10'11" x 8'10" (3.345 x 2.703)

Bedroom One

20'3" x 8'11" (6.176 x 2.732)

Bedroom Two

14'3" x 6'5" (4.344 x 1.965)

Bathroom

8'0" x 7'10" (2.441 x 2.389)

Landing

6'4" x 5'8" (1.944 x 1.737)

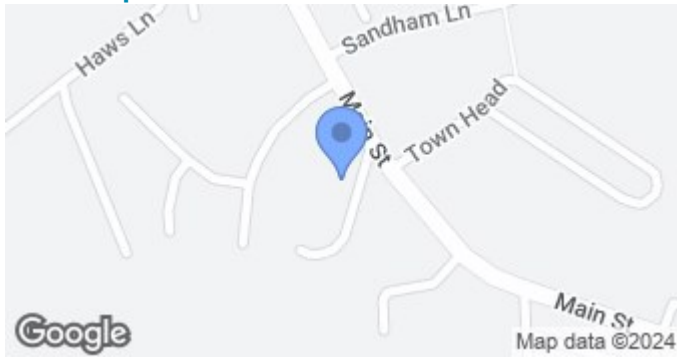


- Village Location
 - Garage
- Large Rear Garden
 - Council Tax A

- Off Road Parking
- Two Bedrooms
 - EPC E



Road Map

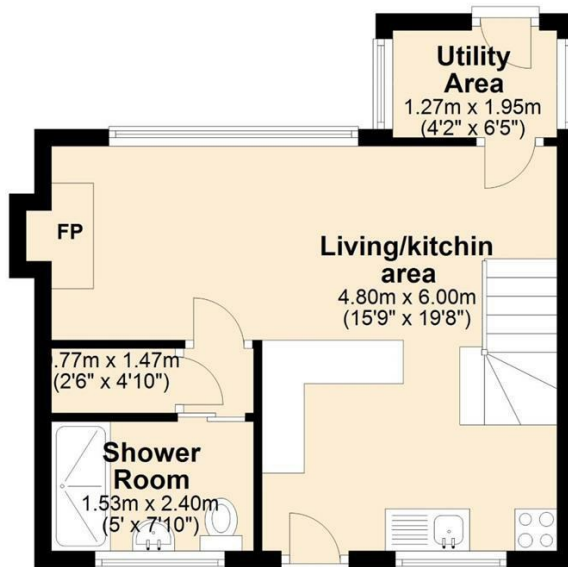


Terrain Map

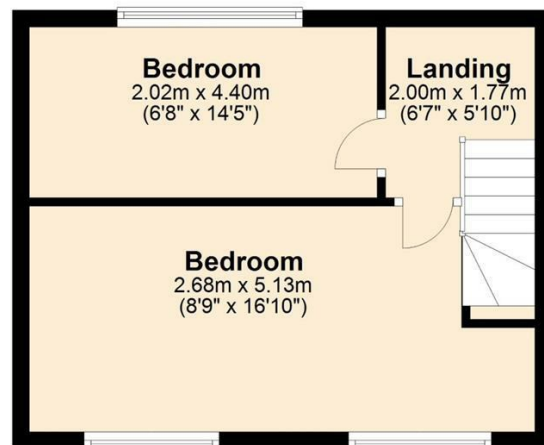


Floor Plan

Ground Floor



First Floor



2 Caton Street, Millom

Corrie and Co aim to sell your property, at the best possible price, in the shortest possible time. We have developed a clear marketing strategy, over many years, to ensure your property is exposed to all social media platforms, Rightmove, Zoopla and our own Corrie and Co website.

We also offer:

- Professional Photography
- Full promotion, throughout all our branches
- Experienced, qualified, friendly staff
- Full viewing service with feedback

To ensure your move is stress free, we can help with Mortgage advice. We work alongside local Solicitors, offering competitive conveyancing services.

We are local, family run business who are wholly independent which means we can recommend services to most suit your needs. Our aim is to provide quality advice and expertise at all times, so you can make an informed decision.

