

cubitt & west

Deposit Alternative
Available



Price

£3,000 PCM

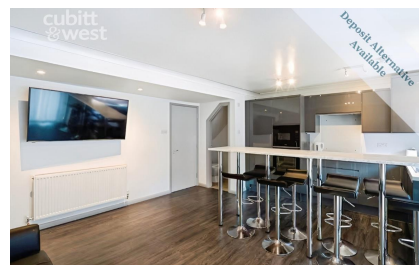
Fees Apply



Available 20/09/25

Central Avenue,
Telscombe Cliffs, BN10

cubitt & west
Helping you move forwards



Main Features

[Downstairs Cloakroom](#)
[Two En-Suite Bedrooms](#)
[Short-Term Let Opportunity](#)
[Deposit Alternative Offered](#)
[Fully Furnished Throughout](#)
[Driveway & Hot Tub!](#)



Deposit required is £3,461.54
Lewes District - Council Tax Band Tax Band B

Renting a property is a big commitment and we recommend that you visit the local authority website and these websites which offer helpful information and advice about letting

www.gov.uk/government/publications/how-to-rent

www.gov.uk/private-renting

www.cubittandwest.co.uk/renting/tenancy-fees-individuals/

www.gov.uk/green-deal-energy-saving-measures

Call Brighton 01273 747525 ■ cubittandwest.co.uk

IMPORTANT INFORMATION: Please contact our Lettings Team who will confirm the total costs involved in renting this property. For clarification, we wish to inform the prospective tenant that we have prepared these details as a general guide. The agent has not carried out a detailed survey nor tested the services, appliances, or specific fittings (unless otherwise stated), and no warranty can be given as to their condition. All room measurements are taken at floor level. We strongly recommend that all the information which we provide about the property is verified by yourself and your advisers. The contents of this publication are © Cubitt & West, 2015. Cubitt & West is a trading name of Arun Estates Limited Registered in England No. 2597969

Accommodation

Hallway

Downstairs Bedroom

Downstairs Cloakroom

Open-Plan Living

Landing

Bedroom

Family Bathroom

Bedroom

Landing

Bedroom

En-Suite Shower Room

Bedroom

En-Suite Shower Room

Driveway & Garden



Ground Floor

Approx. 39.6 sq. metres (426.6 sq. feet)

**Open
Plan
Living**
4.79m (15'9")
x 5.04m (16'6") max

Bedroom
2.97m x 3.02m
(9'9" x 9'11")

First Floor

Approx. 39.6 sq. metres (426.6 sq. feet)

Bedroom
4.32m x 2.70m
(14'2" x 8'10")

Bedroom
3.45m x 3.02m
(11'4" x 9'11")

Second Floor

Approx. 27.3 sq. metres (294.1 sq. feet)

Bedroom
2.64m x 3.42m
(8'8" x 11'3")

Bedroom
2.68m x 2.44m
(8'10" x 8')