



Price

£3,000 PCM

Fees Apply



Available 19/04/25

**London Road Uckfield
TN22**

cubitt&west
Helping you move forwards



Main Features

Impressive family home

5 bedrooms

3 reception

3 bathrooms

Double garage

Garden room



Deposit required is £3,461.54
Wealden District - Council Tax Band Tax Band G

Renting a property is a big commitment and we recommend that you visit the local authority website and these websites which offer helpful information and advice about letting

www.gov.uk/government/publications/how-to-rent

www.gov.uk/private-renting

www.cubittandwest.co.uk/renting/tenancy-fees-individuals/

www.gov.uk/green-deal-energy-saving-measures

Call Brighton 01273 747525 ■ cubittandwest.co.uk

IMPORTANT INFORMATION: Please contact our Lettings Team who will confirm the total costs involved in renting this property. For clarification, we wish to inform the prospective tenant that we have prepared these details as a general guide. The agent has not carried out a detailed survey nor tested the services, appliances, or specific fittings (unless otherwise stated), and no warranty can be given as to their condition. All room measurements are taken at floor level. We strongly recommend that all the information which we provide about the property is verified by yourself and your advisers. The contents of this publication are © Cubitt & West, 2015. Cubitt & West is a trading name of Arun Estates Limited Registered in England No. 2597969

Accommodation

Kitchen 3.61 x 3.36

Orangery 5.82 x 3.99

Reception 5.19 x 5.01

Dining Room 4.55 x 3.63

WC

Hallway

Lobby

Bathroom

Bedroom 1 5.26 x 4.55

En Suite Shower Room

Bedroom 2 4.24 x 3.63

Bedroom 3 3.97 x 3.02

Landing

Bedroom 4 3.66 x 2.64

Bedroom 5 3.66 x 3.25

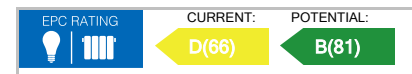
Landing

Shower Room

Garden

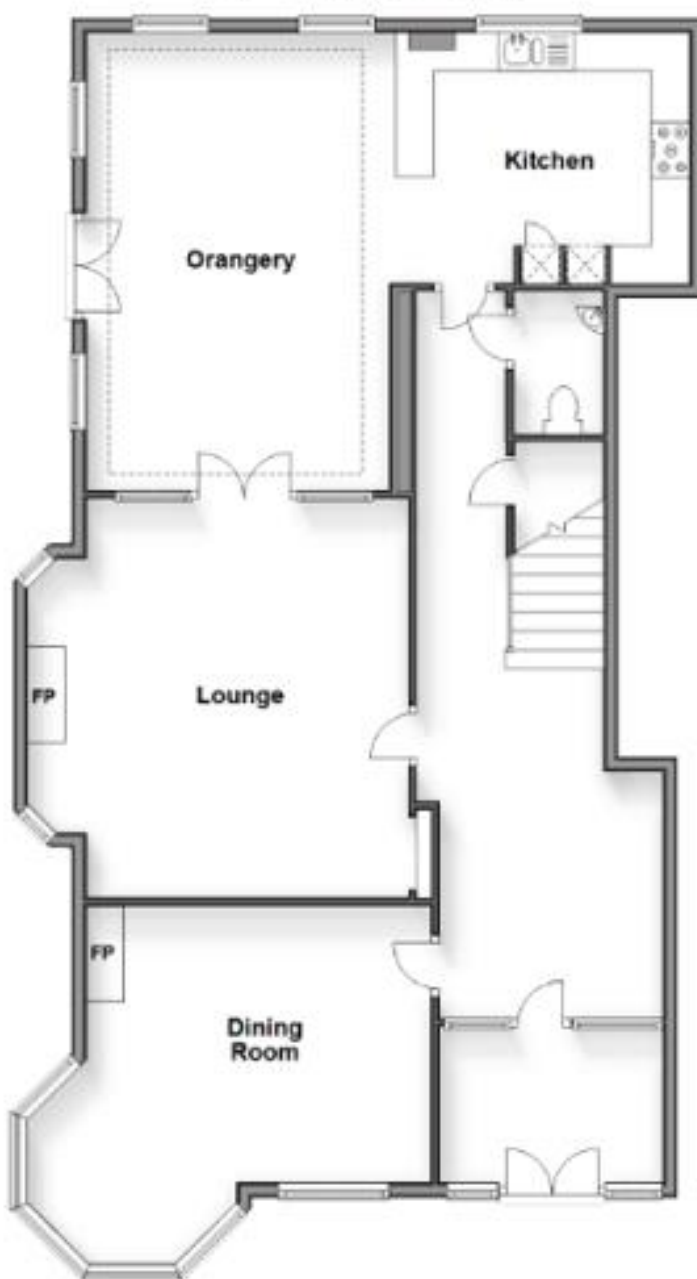
Garden Room

Double Garage



Ground Floor

Approx. 770 sq. metres (8,345 sq. feet)



First Floor

Approx. 670 sq. metres (7,210 sq. feet)



Second Floor

Approx. 275 sq. metres (2,950 sq. feet)



Outbuilding

Approx. 21.5 sq. metres (231 sq. feet)

