



Price

£900 PCM

Fees Apply



Available 17/06/24

Murray Avenue  
Newhaven BN9

**cubitt&west**  
Helping you move forwards



## Main Features

- No Deposit Option
- One bedroom
- New carpets fitted prior to move in
- Unfurnished
- Garage
- Gas central heating and double glazed

## Accommodation

**Reception** 3.73 x 4.63

**Bedroom** 3.57 x 3.80

**Kitchen** 3.56 (max) x 3.03

**Bathroom**

**Garage**

**Under-stair Storage**



**Deposit required is £1,038.46**  
**Lewes District - Council Tax Band Tax Band A**

Renting a property is a big commitment and we recommend that you visit the local authority website and these websites which offer helpful information and advice about letting

[www.gov.uk/government/publications/how-to-rent](http://www.gov.uk/government/publications/how-to-rent)

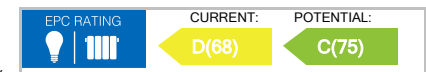
[www.gov.uk/private-renting](http://www.gov.uk/private-renting)

[www.cubittandwest.co.uk/renting/tenancy-fees-individuals/](http://www.cubittandwest.co.uk/renting/tenancy-fees-individuals/)

[www.gov.uk/green-deal-energy-saving-measures](http://www.gov.uk/green-deal-energy-saving-measures)

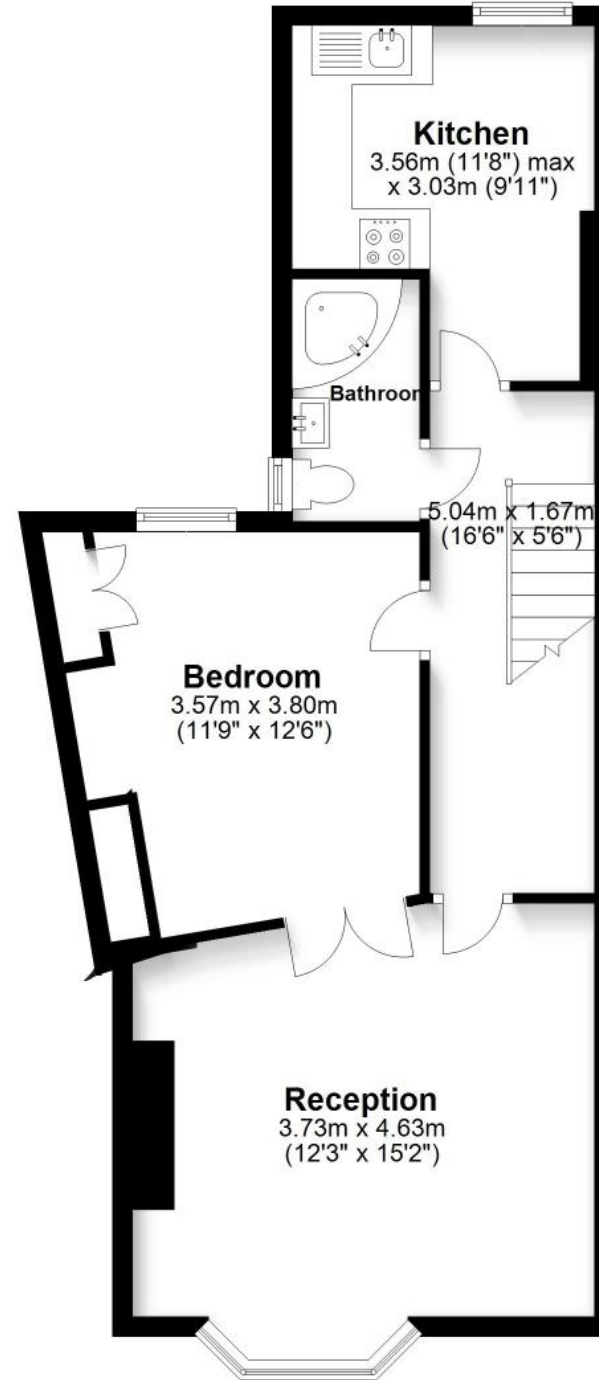
**Call Brighton 01273 747525 ■ [cubittandwest.co.uk](http://cubittandwest.co.uk)**

IMPORTANT INFORMATION: Please contact our Lettings Team who will confirm the total costs involved in renting this property. For clarification, we wish to inform the prospective tenant that we have prepared these details as a general guide. The agent has not carried out a detailed survey nor tested the services, appliances, or specific fittings (unless otherwise stated), and no warranty can be given as to their condition. All room measurements are taken at floor level. We strongly recommend that all the information which we provide about the property is verified by yourself and your advisers. The contents of this publication are © Cubitt & West, 2015. Cubitt & West is a trading name of Arun Estates Limited Registered in England No. 2597969



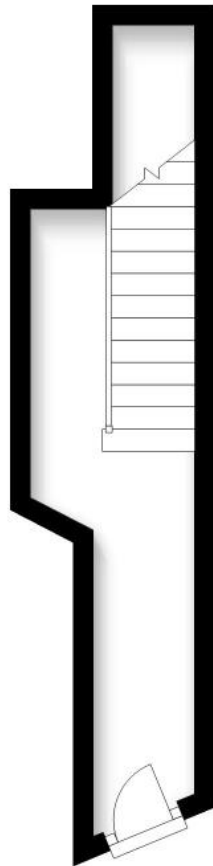
## First Floor

Approx. 54.5 sq. metres (586.6 sq. feet)



## Ground Floor

Approx. 9.7 sq. metres (104.0 sq. feet)



Total area: approx. 64.2 sq. metres (690.5 sq. feet)