



## Holyport Road, SW6

### £1,150,000

Situated in the peaceful and coveted Rosebank development on Holyport Road, this impressive 4-bedroom home offers a rare opportunity to acquire a riverside residence in SW6. With generous proportions, abundant light and river views, this property promises both comfort and style for families seeking space and convenience.

The area boasts a wealth of local amenities, including the scenic Thames Path, Bishops Park, and the renowned River Café. Several supermarkets and everyday essentials are within easy reach, while the neighbourhood also caters well to families with a strong selection of schools. These include Queen's Manor Primary School, Fulham

### Features

- Four Bedrooms
- Three Bathrooms
- Riverside Location
- Private Garden
- Private Parking
- Freehold



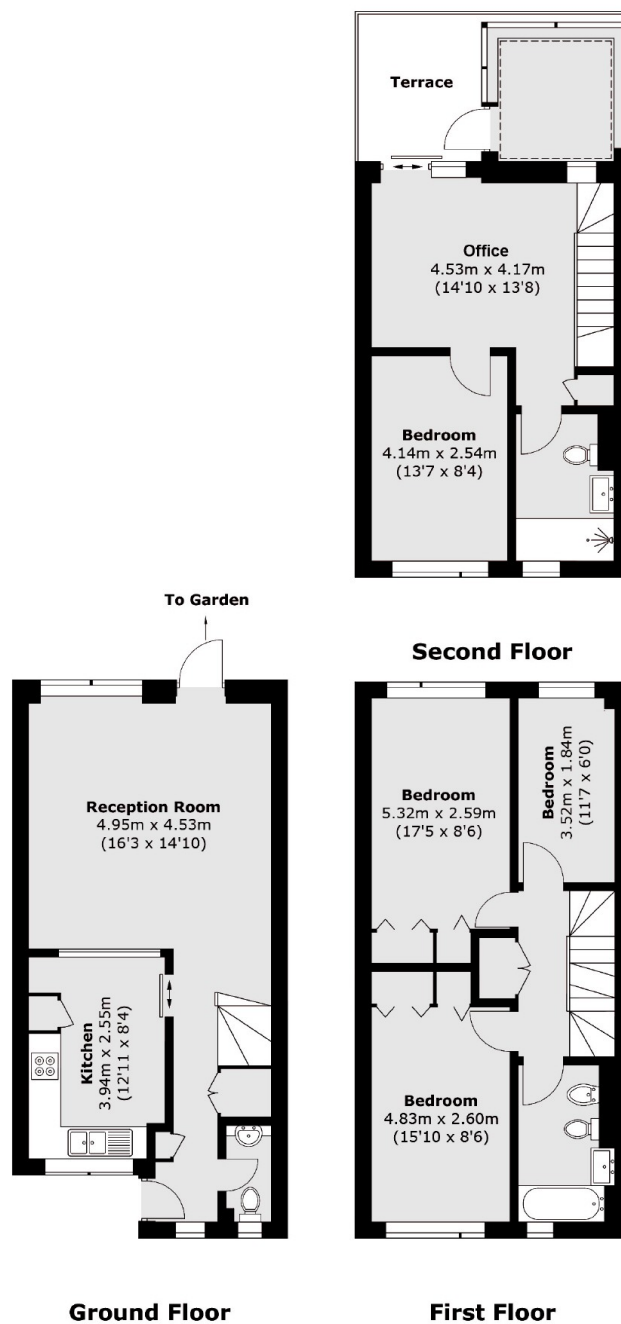


**Holyport Road, SW6**





# Holyport Road, London, SW6



Approx Internal Area: 118.0 sq. m (1,270.1 sq. ft)  
External Storage: 5.1 sq. m (54.8 sq. ft)  
Terrace : 6.8 sq. m (73.2 sq. ft)

## Dexters

Parsons Green  
656 Fulham Road  
London  
SW6 5RX  
Sales  
020 7731 5115

Energy Rating: D. We aim to make our particulars both accurate and reliable. However they are not guaranteed; nor do they form part of an offer or contract. If you require clarification on any points then please contact us, especially if you're traveling some distance to view. Please note that appliances and heating systems have not been tested and therefore no warranties can be given as to their good working order.

**RICS** Regulated  
Estate Agent  
and Letting Agent

dexters.co.uk