



## Kilmaine Road, SW6

£819 Per week

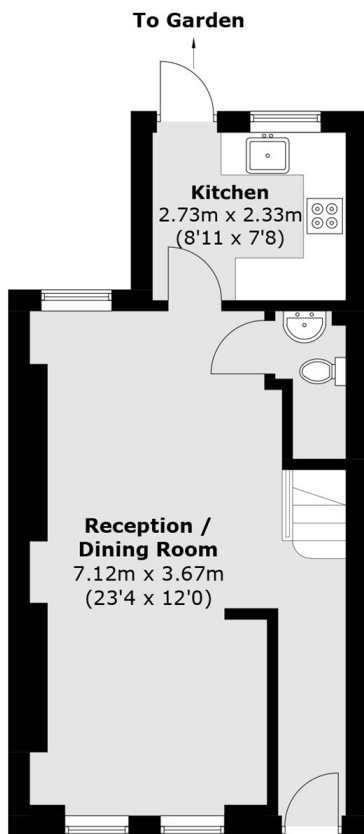
A large, well maintained three bedroom house. This property has three double bedrooms, two full bathrooms + WC, a generous living area with a separate kitchen which leads out to the private garden.

Kilmaine Road is located in Munster village, this property has excellent access to multiple transport links including Fulham Broadway and Parsons Green tube stations.

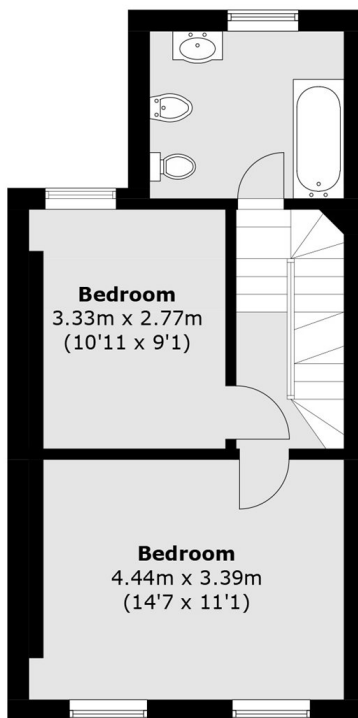
### Features

- Three Bedrooms
- Two Bathrooms + WC
- Private Garden
- Seperate Kitchen
- Over 1500sqft
- Munster Village

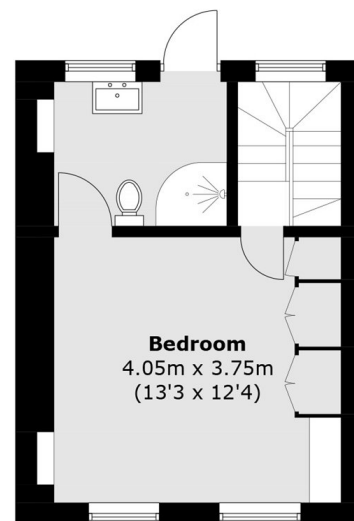
# Kilmaine Road, London, SW6



**Ground Floor**



**First Floor**



**Second Floor**

Total area (approx.): 102.1 sq. m (1,098.9 sq. ft)