



Greyhound Road, W6

£599,999

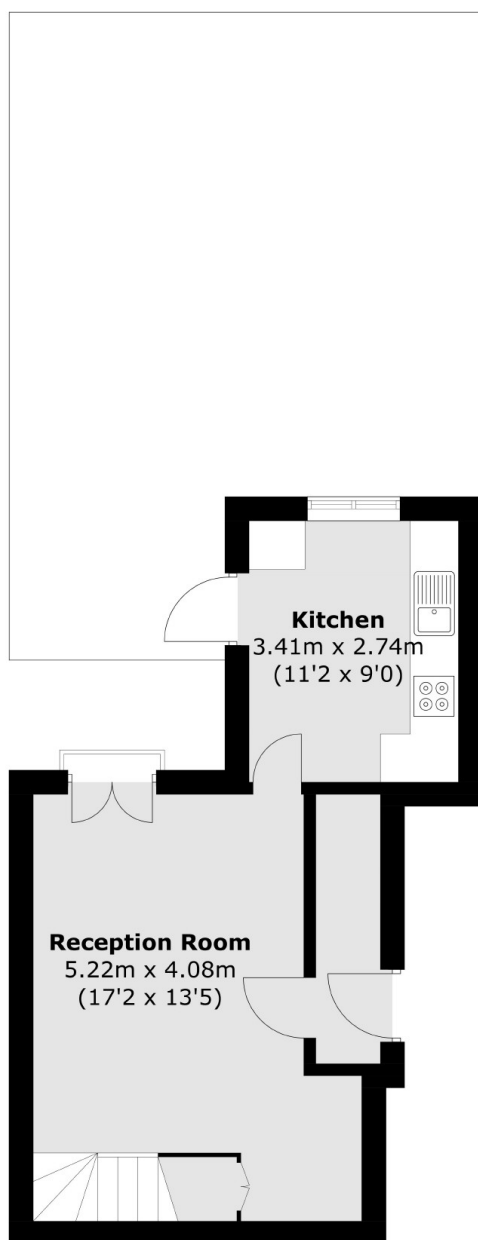
This split level, two bedroom garden flat is excellently located close to Hammersmith and Barons Court. The property comprises of two double bedrooms, a separate kitchen and living space, ample storage and a larger than average private garden.

Greyhound Road is close to a variety of bus routes leading into Fulham Broadway, the City and Hammersmith. Barons Court station is near by with a selection of bars, restaurants and local amenities are also on your doorstep.

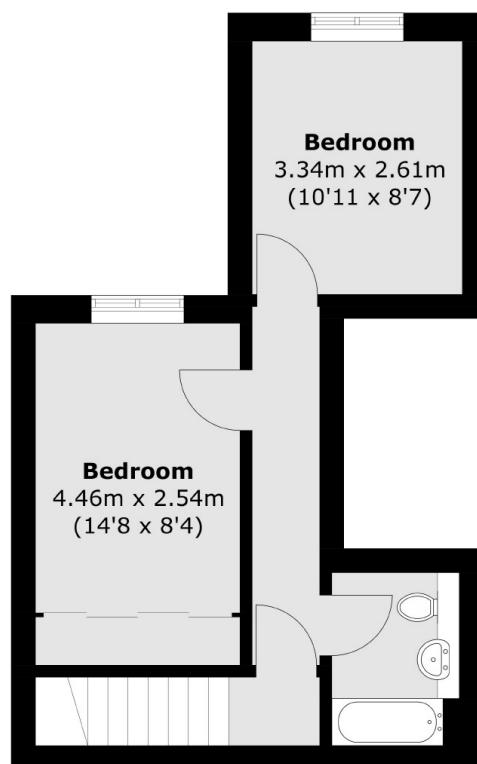
Features

- Two Bedrooms
- Large Private Garden
- Split Level
- One Bathroom
- Separate Kitchen
- Barons Court

Greyhound Road, London, W6



Ground Floor



First Floor

Total area (approx.): 62.3 sq. m (670.6 sq. ft)