



## Hazlebury Road, SW6

### £1,800,000

This is a wonderful opportunity to purchase a substantial and unique family home in the 'Bury Triangle'. The property has been recently renovated to a high standard by the present owners and provides contemporary living accommodation throughout whilst benefitting from an abundance of light, a larger than average garden and an installed Sonos system in the kitchen/living space and bedrooms.

Hazlebury Road is located a short distance from the amenities in both Fulham Broadway and Parsons Green. Eel Brook Common is a short walk away and it is close to the restaurants, cafés and boutique shops on The Kings Road.

### Features

- Five Bedrooms
- Three Bathrooms
- Open Plan Living Space
- Private Large Garden
- 'Bury' Triangle
- Freehold



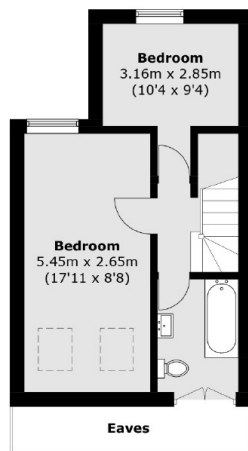
## Hazlebury Road, SW6

As you enter on the ground floor, you are presented with a spacious living room which is currently used as a study, a double bedroom and a cloakroom. Moving downstairs, there is an open plan kitchen/living space with bi-folding doors which lead onto the private garden which provides a sense of inside/outside living. There is also a separate WC to the rear.

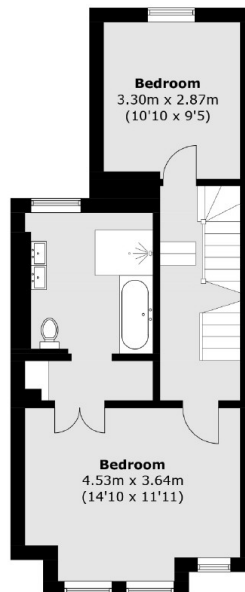
On the first floor, there is a further double bedroom and the principle suite with a dressing room and a beautifully refurbished en suite bathroom. On the second floor, the property offers two additional bedrooms with a family bathroom.



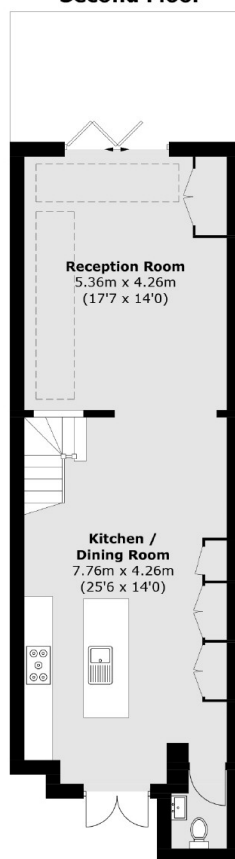
# Hazlebury Road, London, SW6



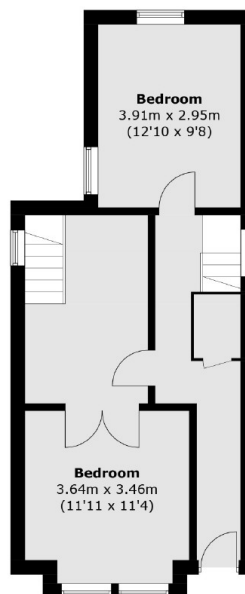
**Second Floor**



**First Floor**



**Lower Ground Floor**



**Ground Floor**

Total area (approx.): 181.0 sq. m (1,948.3 sq. ft)  
(Excluding Eaves)