

Chard

— ESTATE AGENTS —



Broughton Road, SW6

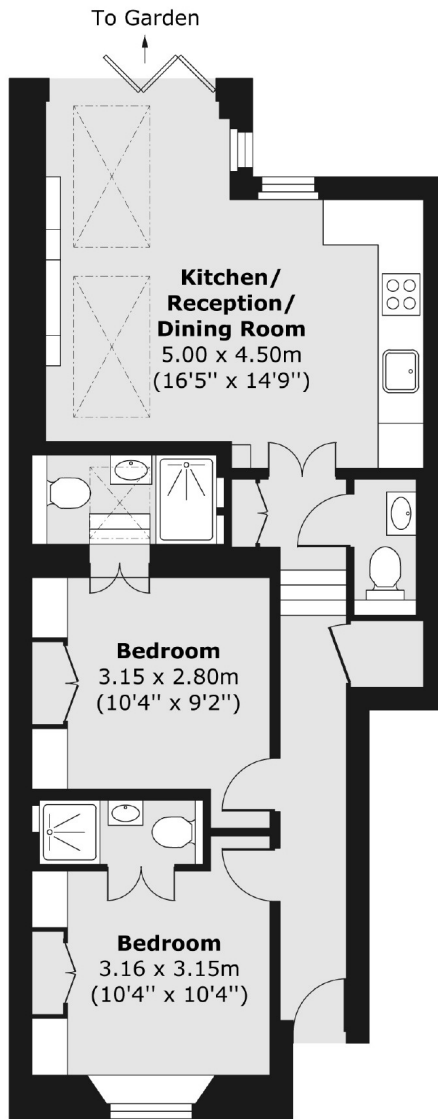
£700,000

An immaculately refurbished two double bedroom, two bathroom ground floor garden flat in Sands End. The property has an open plan kitchen living room, own front door and bi-fold doors which open onto private outdoor space.

Located at the top of Sands End, the property is within close proximity to Parsons Green and Fulham Broadway. The green spaces of both Eel Brook Common and Bishops Park are only a short walk away.

Chard

— ESTATE AGENTS —



Chard Fulham
656 Fulham Road,
London, SW6 5RX
020 7731 5115
fulhamsales@chard.co.uk

Energy Rating: . We aim to make our particulars both accurate and reliable. However they are not guaranteed; nor do they form part of an offer or contract. If you require clarification on any points then please contact us, especially if you're traveling some distance to view. Please note that appliances and heating systems have not been tested and therefore no warranties can be given as to their good working order.