

# Chard

— ESTATE AGENTS —



## Fulham Palace Road, SW6

£550,000

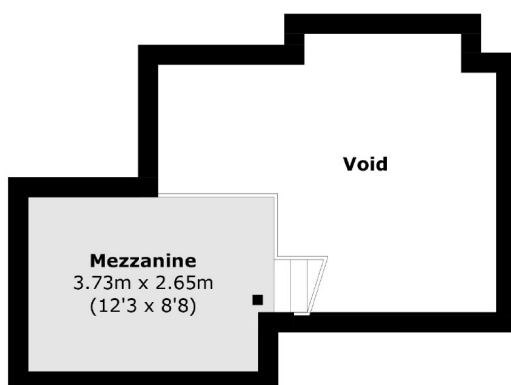
A stylish top floor two bedroom apartment overlooking Bishops Park. The property offers incredibly high ceilings, a separate mezzanine that is a versatile space for either additional living or work from home office and a private balcony.

Located opposite Bishops Park, tennis courts and the River Thames. It is within walking distance from an array of upmarket shops, bars and restaurants, including the Michelin-starred River Cafe, and the boutique stores of the New King's Road.

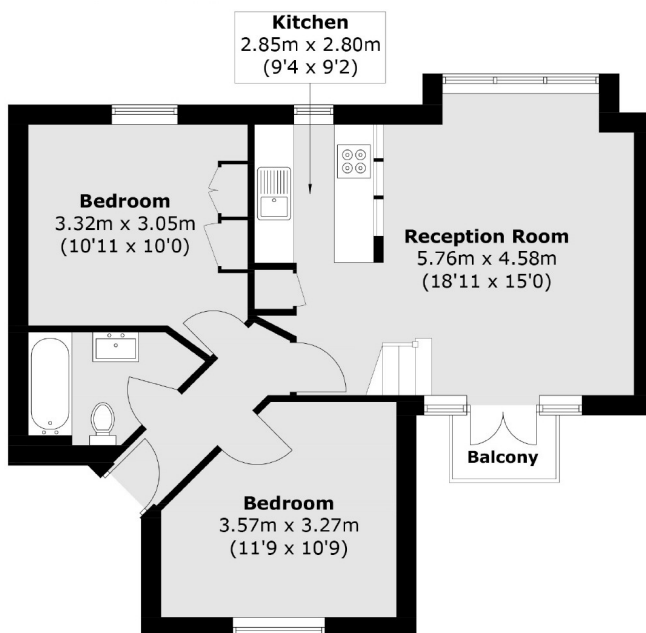
- Top Floor • Fantastic Views • Balcony •
- Two Bedroom • Mezzanine • Bishops Park •

# Chard

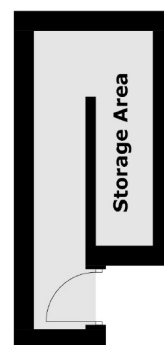
— ESTATE AGENTS —



**Mezzanine**



**Third Floor**



**Ground Floor**

Total area (approx.): 63.3 sq. m (681.4 sq. ft)  
(Excluding Void)

External Storage : 7.0 sq. m (75.3 sq. ft)

Balcony: 1.5 sq. m (16.1 sq. ft)

Chard Fulham  
656 Fulham Road,  
London, SW6 5RX  
020 7731 5115  
fulhamsales@chard.co.uk

Energy Rating: E. We aim to make our particulars both accurate and reliable. However they are not guaranteed; nor do they form part of an offer or contract. If you require clarification on any points then please contact us, especially if you're traveling some distance to view. Please note that appliances and heating systems have not been tested and therefore no warranties can be given as to their good working order.