

# Chard

— ESTATE AGENTS —



## Hazlebury Road, SW6

£1,800,000

This is a wonderful opportunity to purchase a substantial and unique family home in the 'Bury Triangle'. The property has been recently renovated to a high standard by the present owners and provides contemporary living accommodation throughout whilst benefitting from an abundance of light, a larger than average garden and an installed Sonos system in the kitchen/living space and bedrooms.

---



As you enter on the ground floor, you are presented with a spacious living room which is currently used as a study, a double bedroom and a cloakroom. Moving downstairs, there is an open plan kitchen/living space with bi-folding doors which lead onto the private garden which provides a sense of inside/outside living. There is also a separate WC to the rear.

On the first floor, there is a further double bedroom and the principle suite with a dressing room and a beautifully refurbished en suite bathroom. On the second floor, the property offers two additional bedrooms with a family bathroom.

Hazlebury Road is located a short distance from the amenities in both Fulham Broadway and Parsons Green. Eel Brook Common is a short walk away and it is close to the restaurants, cafés and boutique shops on The Kings Road.

- Five Bedrooms • Three Bathrooms • Open Plan Living Space •
- Private Large Garden • 'Bury' Triangle • Freehold •

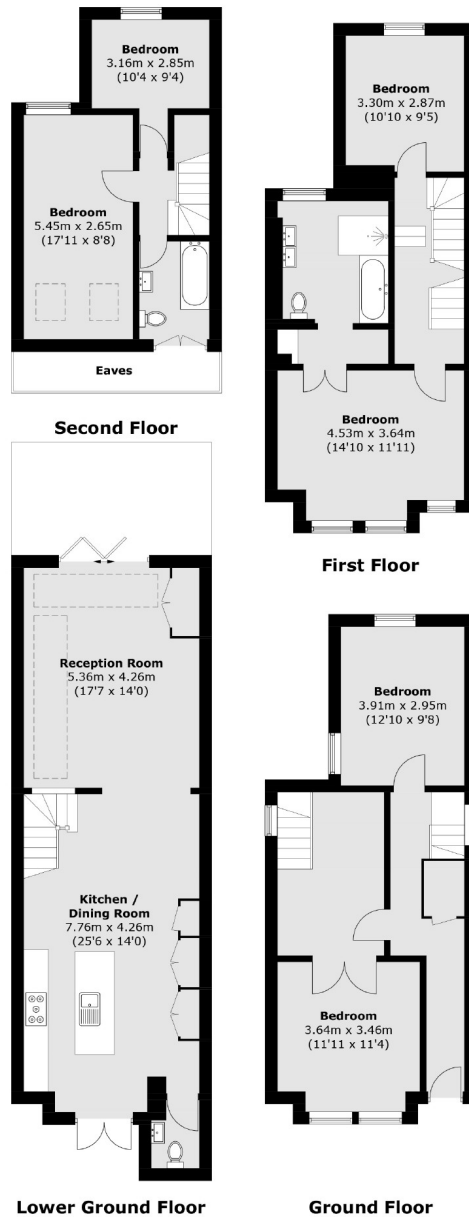






# Chard

— ESTATE AGENTS —



Total area (approx.): 181.0 sq. m (1,948.3 sq. ft)  
(Excluding Eaves)

Chard Fulham  
656 Fulham Road,  
London, SW6 5RX  
020 7731 5115  
fulhamsales@chard.co.uk

Energy Rating: C. We aim to make our particulars both accurate and reliable. However they are not guaranteed; nor do they form part of an offer or contract. If you require clarification on any points then please contact us, especially if you're traveling some distance to view. Please note that appliances and heating systems have not been tested and therefore no warranties can be given as to their good working order.