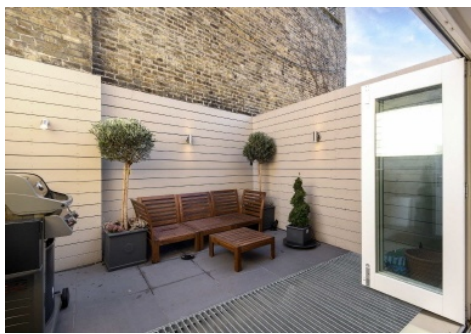


Chard

— ESTATE AGENTS —



Epirus Road, SW6

£980 pw (£4,500 pcm)

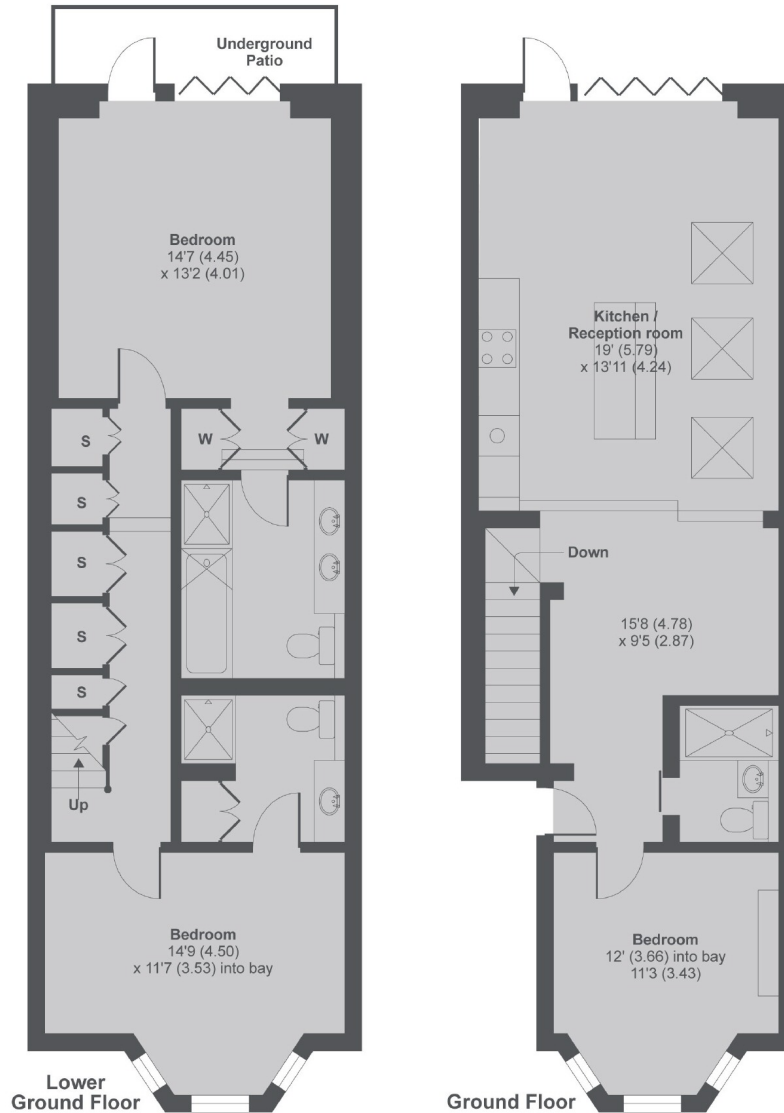
This three bedroom apartment has been finished to a very high standard and is arranged over the ground and lower ground floors of a Victorian conversion. The property has three bathrooms and a private garden.

Epirus Road is located just off Fulham Road and North End Road where there are many different bus routes leading into Chelsea and the city. The closest underground station is Fulham Broadway and the nearest super store is Waitrose on the corner of Fulham Road and North End Road.

- Three double bedrooms • Immaculate refurbishment • Three bathrooms •
- Private garden • Open plan living room and kitchen • Fulham Broadway Underground •

Chard

— ESTATE AGENTS —



Epirus Road SW6

MAIN HOUSE APPROX FLOOR AREA 1324 SQ.FT 122.9 SQ.M

Copyright nichecom.co.uk 2017 Produced for Dexters REF : 159465

Chard Fulham
656 Fulham Road,
London, SW6 5RX
020 7384 1400
fulhamlettings@chard.co.uk

Energy Rating: B. We aim to make our particulars both accurate and reliable. However they are not guaranteed; nor do they form part of an offer or contract. If you require clarification on any points then please contact us, especially if you're traveling some distance to view. Please note that appliances and heating systems have not been tested and therefore no warranties can be given as to their good working order.