

# Chard

— ESTATE AGENTS —



## New Kings Road, SW6

£395,000

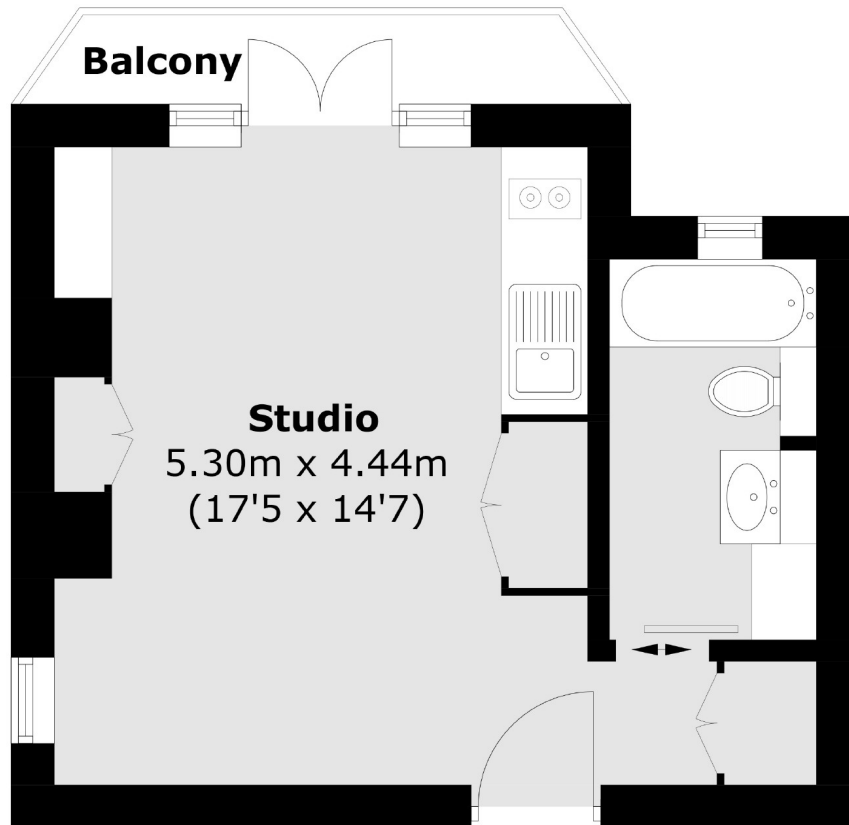
This flat has been finished to an immaculate standard and benefits from plenty of storage and a balcony. This property would make a wonderful home as it is excellently located in the middle of Parsons Green with an outlook over Eel Brook Common.

New Kings Road is close to Putney Bridge and Parsons Green stations, with many bus routes leading into Putney and the city. There is also a variety of local amenities nearby and a selection of boutique restaurants, cafés and bars all on your doorstep.

- Studio • Balcony • Immaculate Condition •
- Bespoke Storage • Share Of Freehold • Parsons Green •

# Chard

— ESTATE AGENTS —



Total area (approx.): 22.6 sq. m (243.3 sq. ft)  
Balcony: 2.3 sq. m (24.7 sq. ft)

Chard Fulham  
656 Fulham Road,  
London, SW6 5RX  
020 7731 5115  
[fulhamsales@chard.co.uk](mailto:fulhamsales@chard.co.uk)

Energy Rating: D. We aim to make our particulars both accurate and reliable. However they are not guaranteed; nor do they form part of an offer or contract. If you require clarification on any points then please contact us, especially if you're traveling some distance to view. Please note that appliances and heating systems have not been tested and therefore no warranties can be given as to their good working order.