

# Chard

— ESTATE AGENTS —



## Harwood Road, SW6

£550,000

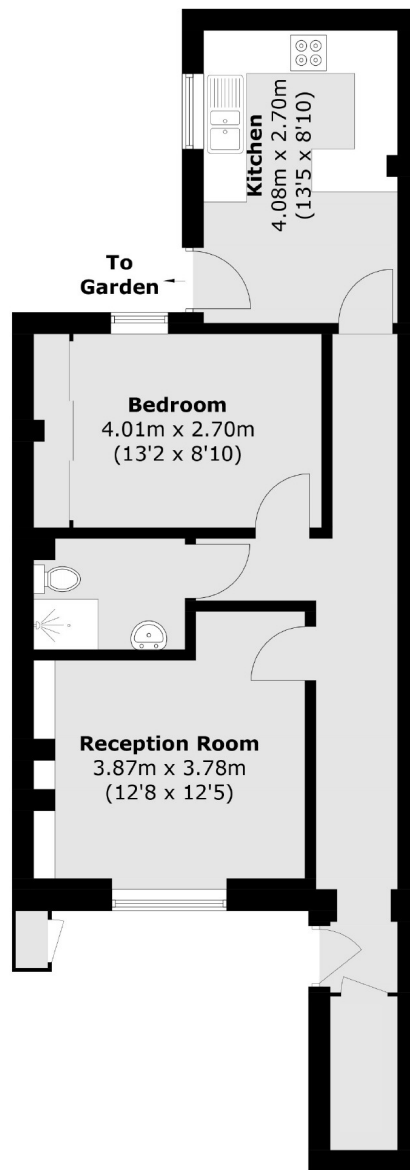
This is an attractive one bedroom garden flat conveniently located close to Eel Brook Common and Fulham Broadway. The apartment has been finished to a good standard throughout benefitting from a separate kitchen and living space with a large garden to the rear.

Harwood Road is located off Fulham Road and New Kings Road with a variety of bus routes leading into the city. Fulham Broadway station is moments away with local amenities, bars, restaurants and supermarkets all on your doorstep.

- One Bedroom • Large Garden • Own Entrance •
- Separate Kitchen • Share Of Freehold • Fulham Broadway •

# Chard

— ESTATE AGENTS —



Total area (approx.): 54.3 sq. m (584.5 sq. ft)  
(Excluding External Cupboard)

Chard Fulham  
656 Fulham Road,  
London, SW6 5RX  
020 7731 5115  
[fulhamsales@chard.co.uk](mailto:fulhamsales@chard.co.uk)

Energy Rating: C. We aim to make our particulars both accurate and reliable. However they are not guaranteed; nor do they form part of an offer or contract. If you require clarification on any points then please contact us, especially if you're traveling some distance to view. Please note that appliances and heating systems have not been tested and therefore no warranties can be given as to their good working order.