

Chard

— ESTATE AGENTS —



Brompton Park Crescent, SW6

£392 pw (£1,700 pcm)

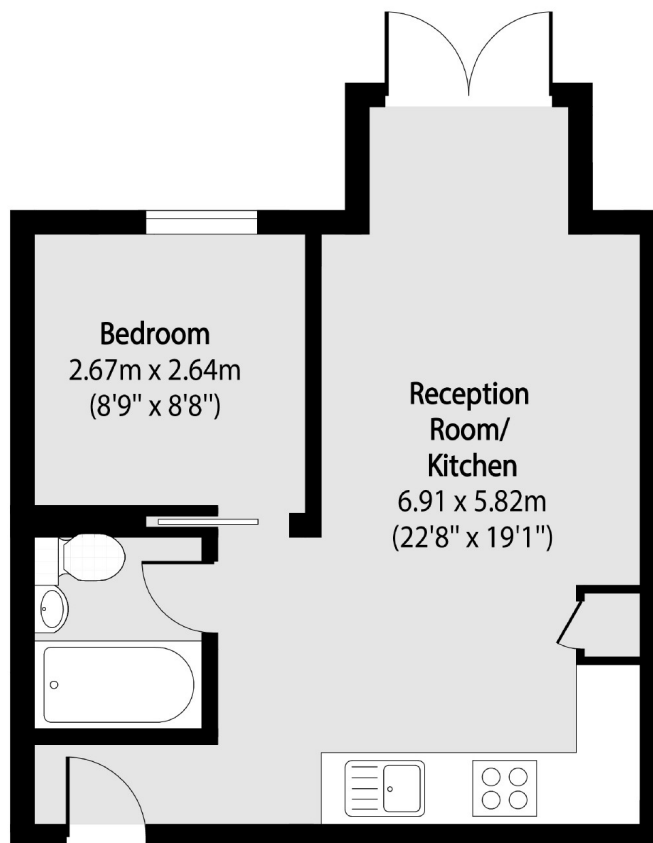
This charming studio apartment is located in a popular gated development with a private residents gym, indoor swimming pool and off street parking. The property boasts an open plan kitchen/reception room, double bedroom, modern bathroom and a private patio garden.

Brompton Park Crescent is a popular development off Seagrave Road, and is moment's away from West Brompton and Fulham Broadway underground stations (District line & Over ground). This property is well located for all local amenities, restaurants and bars.

- Gated Development • Residents Gym • Residents Swimming Pool •
- Private Patio Garden • Off Street Parking • Well Manicured Grounds •

Chard

— ESTATE AGENTS —



Total area (approx): 35.02 sq m (377 sq. ft)

Chard Fulham
656 Fulham Road,
London, SW6 5RX
020 7384 1400
fulhamlettings@chard.co.uk

Energy Rating: D. We aim to make our particulars both accurate and reliable. However they are not guaranteed; nor do they form part of an offer or contract. If you require clarification on any points then please contact us, especially if you're traveling some distance to view. Please note that appliances and heating systems have not been tested and therefore no warranties can be given as to their good working order.