

Chard

— ESTATE AGENTS —



Imperial Crescent, SW6

£680 pw (£2,950 pcm)

This two bedroom, two bathroom first floor apartment in Imperial Wharf has a semi open-plan living area with a private balcony overlooking Imperial Park.

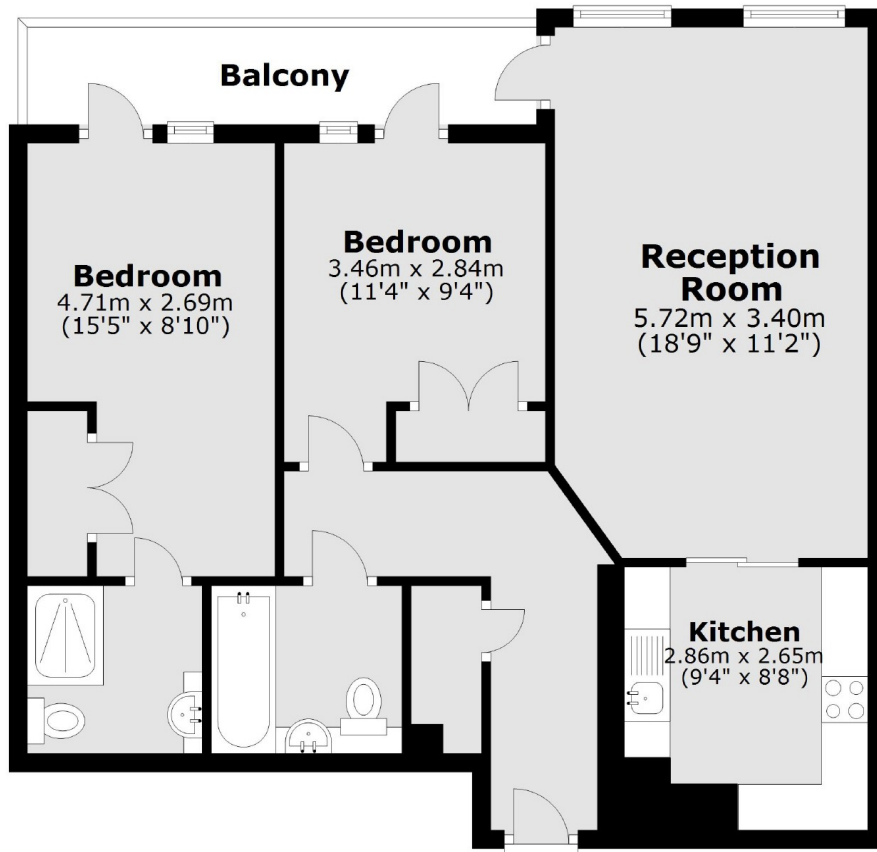
Imperial Wharf Overground station is moments away along with many buses routes. For a scenic mode of transport, the river taxi is on your doorstep with routes into the city and Wandsworth. Fulham Broadway, Chelsea and Battersea are all close by.

- Two Double Bedrooms • Two Bathrooms • Semi Open-Plan •
- Integrated Kitchen • Private Balcony • Park Views •

Chard

— ESTATE AGENTS —

First Floor



Main area: Approx. 68.2 sq. metres (734.2 sq. feet)
Plus balconies, approx. 6.5 sq. metres (70.2 sq. feet)

Chard Fulham
656 Fulham Road,
London, SW6 5RX
020 7384 1400
fulhamlettings@chard.co.uk

Energy Rating: B. We aim to make our particulars both accurate and reliable. However they are not guaranteed; nor do they form part of an offer or contract. If you require clarification on any points then please contact us, especially if you're traveling some distance to view. Please note that appliances and heating systems have not been tested and therefore no warranties can be given as to their good working order.