

# Chard

— ESTATE AGENTS —



## Peterborough Villas, SW6

£530 pw (£2,300 pcm)

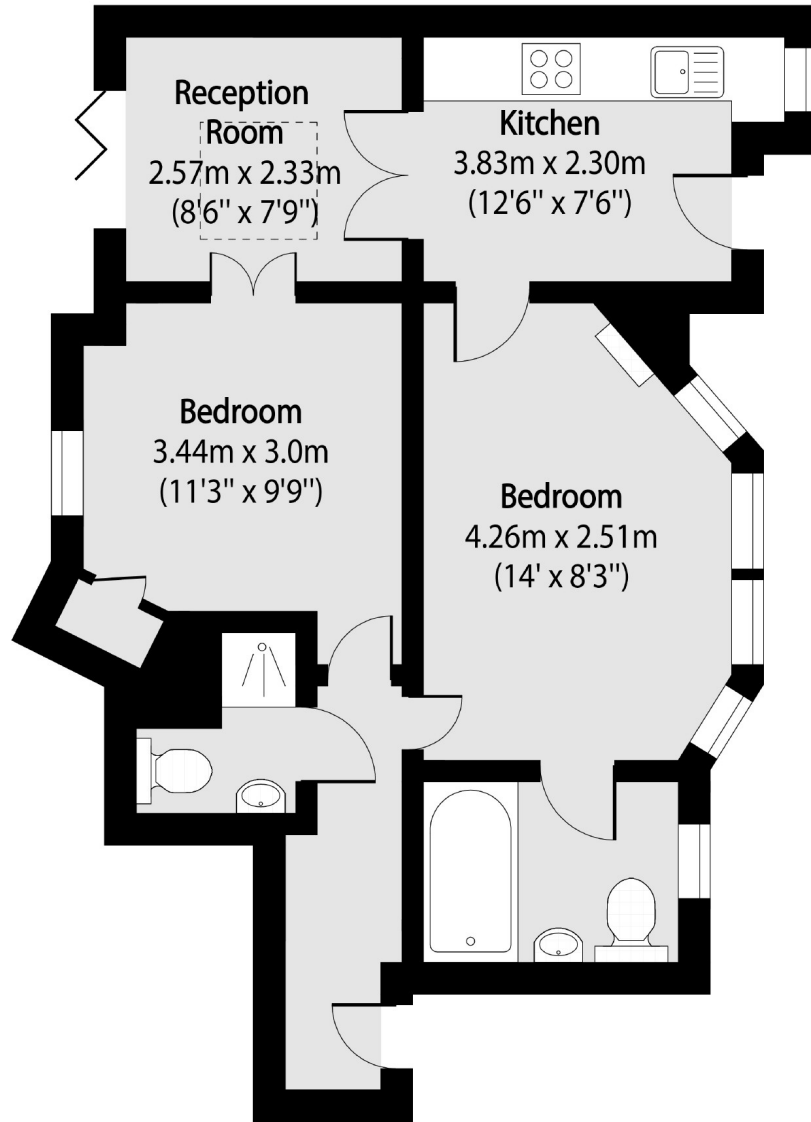
A charming and well presented apartment in the heart of Fulham. The property offers an eat in kitchen, reception area, two double bedrooms, two bathrooms and two private patios.

Peterborough Villas is ideally located off the New Kings Road with the green space of Eel Brook Common, amenities of New Kings Road and transport links of Fulham Broadway on its doorstep.

- Period Property • Two Private Patios • Two Bathrooms •
- Central Location • Eel Brook Common • New Kings Road •

# Chard

— ESTATE AGENTS —



Total area (approx): 47.65 sq m (512 sq. ft)

Chard Fulham  
656 Fulham Road,  
London, SW6 5RX  
020 7384 1400  
[fulhamlettings@chard.co.uk](mailto:fulhamlettings@chard.co.uk)

Energy Rating: . We aim to make our particulars both accurate and reliable. However they are not guaranteed; nor do they form part of an offer or contract. If you require clarification on any points then please contact us, especially if you're traveling some distance to view. Please note that appliances and heating systems have not been tested and therefore no warranties can be given as to their good working order.