

Chard

— ESTATE AGENTS —



Carlyle Court, SW10

£784 pw (£3,400 pcm)

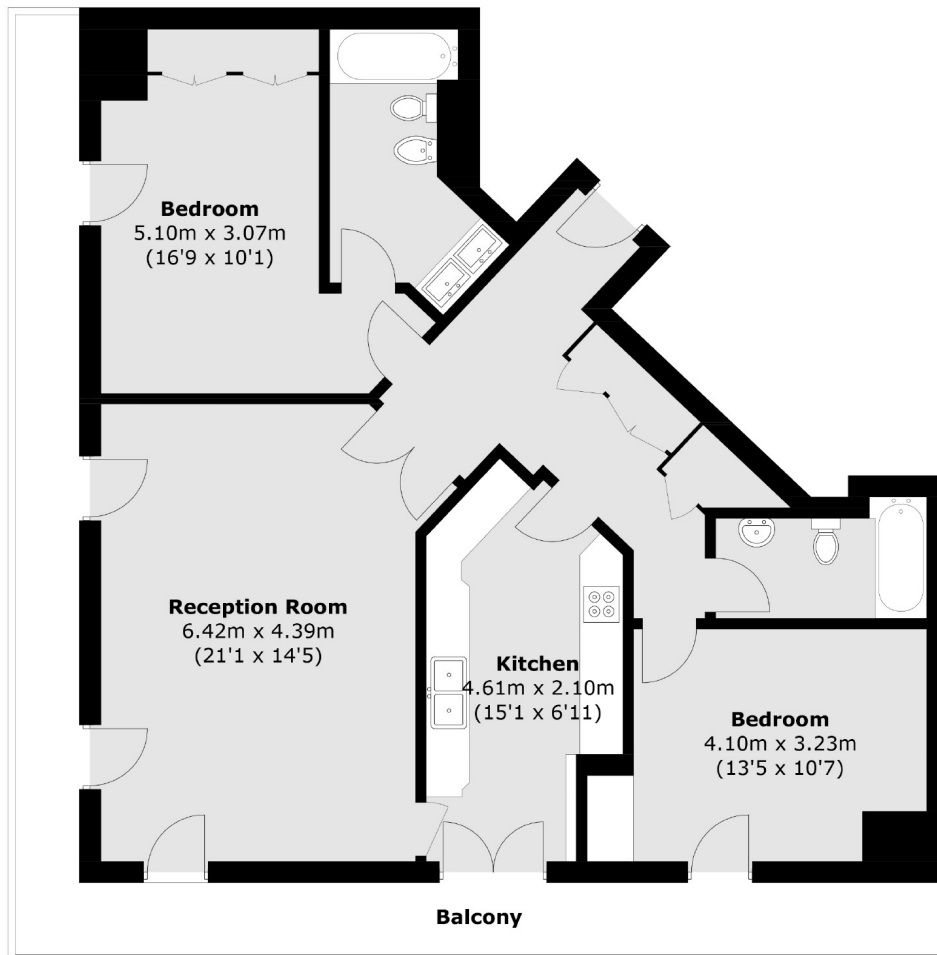
A two double bedroom apartment available to let in Chelsea Harbour. Spread over one thousand square feet, this property would be ideal for two professional sharers or a family. The property also benefits from a private balcony.

The nearest underground station is Fulham Broadway for District Line access into the City. There are also many bus routes on Lots Road leading into the city and into Sloane Square.

- Two Double Bedrooms • Two Bathrooms • Separate Kitchen •
- Balcony • Concierge • Wood Flooring •

Chard

— ESTATE AGENTS —



Total area (approx.): 101.6 sq. m (1,093.6 sq. ft)
Balcony area : 23.9 sq. m (257.2 sq. ft)

Chard Fulham
656 Fulham Road,
London, SW6 5RX
020 7384 1400
fulhamlettings@chard.co.uk

Energy Rating: D. We aim to make our particulars both accurate and reliable. However they are not guaranteed; nor do they form part of an offer or contract. If you require clarification on any points then please contact us, especially if you're traveling some distance to view. Please note that appliances and heating systems have not been tested and therefore no warranties can be given as to their good working order.