

Chard

— ESTATE AGENTS —



Niton Street, SW6

£692 pw (£3,000 pcm)

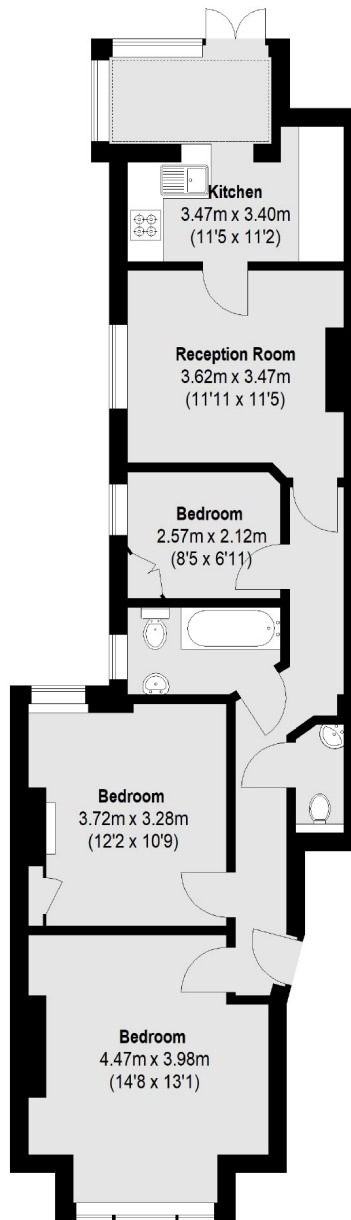
This three bedroom flat on the ground floor of the period building is situated in Fulham. The property offers a bright reception with access to the garden, a separate kitchen and well-proportioned double bedrooms.

Niton Street is located off Fulham Palace Road, with Bishops Park and the River Thames. Hammersmith and Putney Bridge stations are close by, including excellent local amenities, restaurants and cafés.

- Three Bedrooms • Family Bathroom • Private Garden •
- Separate Kitchen • Tiled Bathroom • Ground Floor Flat •

Chard

— ESTATE AGENTS —



Total area (approx.): 73.42 sq. m (790 Sq. ft)

Chard Fulham
656 Fulham Road,
London, SW6 5RX
020 7384 1400
fulhamlettings@chard.co.uk

Energy Rating: . We aim to make our particulars both accurate and reliable. However they are not guaranteed; nor do they form part of an offer or contract. If you require clarification on any points then please contact us, especially if you're traveling some distance to view. Please note that appliances and heating systems have not been tested and therefore no warranties can be given as to their good working order.