

Chard

— ESTATE AGENTS —



William Morris Way, SW6

£623 pw (£2,700 pcm)

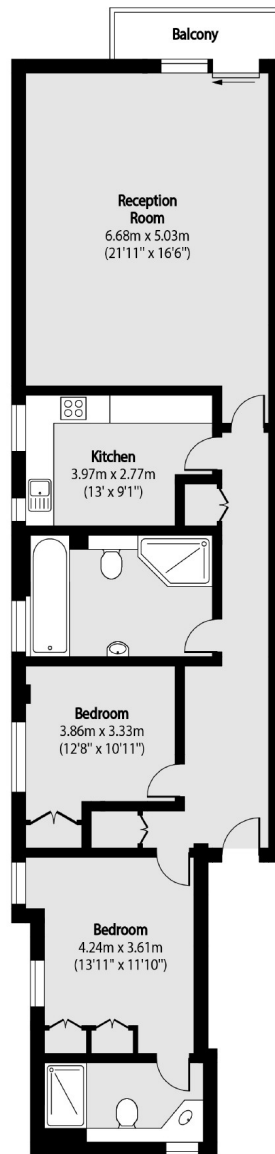
A large two bedroom apartment located in this popular gated riverside development. Boasting wooden floors throughout the property offers a spacious reception room, private balcony overlooking the River Thames, separate kitchen, two double bedrooms and two bathrooms.

Watermans Quay is a gated development adjacent to the River Thames with the transport links of Imperial Wharf close by.

- Private Balcony • Riverside Development • Concierge •
- Gated Development • Two Bathrooms • River Views •

Chard

— ESTATE AGENTS —



Sixth Floor

Total area (approx): 107.07 sq m (1153 sq. ft)

Balcony total area (approx): 10.96 sq m (118 sq. ft)

Chard Fulham
656 Fulham Road,
London, SW6 5RX
020 7384 1400
fulhamlettings@chard.co.uk

Energy Rating: . We aim to make our particulars both accurate and reliable. However they are not guaranteed; nor do they form part of an offer or contract. If you require clarification on any points then please contact us, especially if you're traveling some distance to view. Please note that appliances and heating systems have not been tested and therefore no warranties can be given as to their good working order.