

Chard

— ESTATE AGENTS —



Niton Street, SW6

£692 pw (£3,000 pcm)

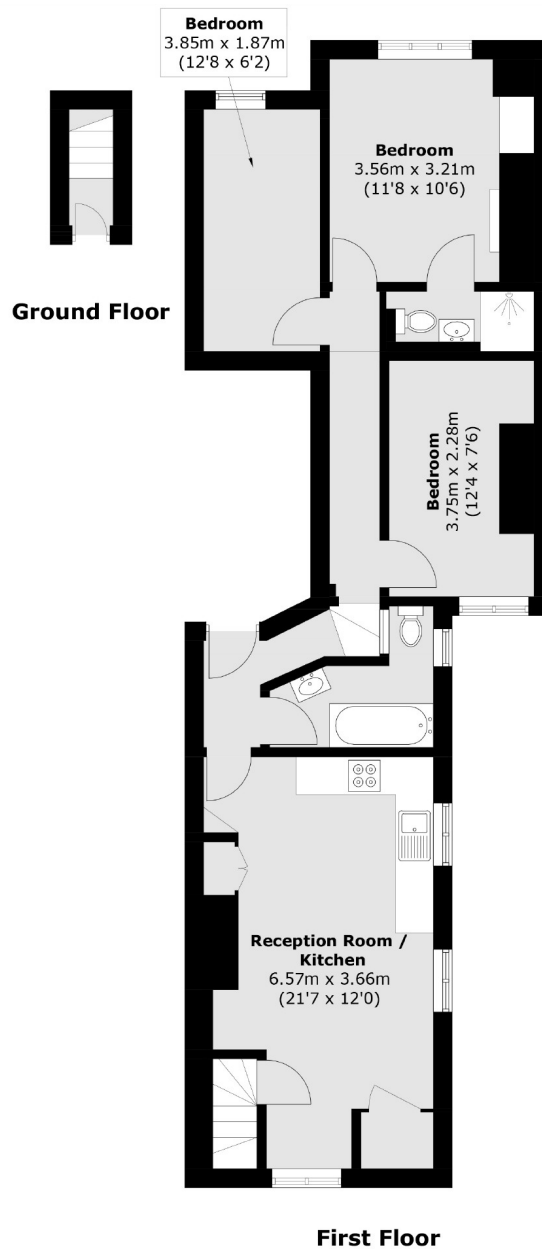
A well presented three bedroom apartment on the top floor of this period home. The property boasts an open plan kitchen/reception room, three double bedrooms and two bathrooms.

Ideally located in the sought after "Alphabet Streets" offering access to local shops, green spaces and transport links to Central London.

- Quiet Residential Road • Period Property • Two Bathroom •
- Split Level • Storage • Bishope Park •

Chard

— ESTATE AGENTS —



Chard Fulham
656 Fulham Road,
London, SW6 5RX
020 7384 1400
fulhamlettings@chard.co.uk

Energy Rating: C. We aim to make our particulars both accurate and reliable. However they are not guaranteed; nor do they form part of an offer or contract. If you require clarification on any points then please contact us, especially if you're traveling some distance to view. Please note that appliances and heating systems have not been tested and therefore no warranties can be given as to their good working order.