

Chard

— ESTATE AGENTS —



Mirabel Road, SW6

£800,000

This two bedroom, two bathroom garden flat is in impeccable order throughout. The property has been recently refurbished to a high standard and benefits from an open plan kitchen/living space ideal for entertaining.



As you enter the property through its own entrance, there are two double bedrooms, one with an en-suite. The open plan kitchen and living space is to the rear of the property with bi-folding doors onto the large private paved garden.

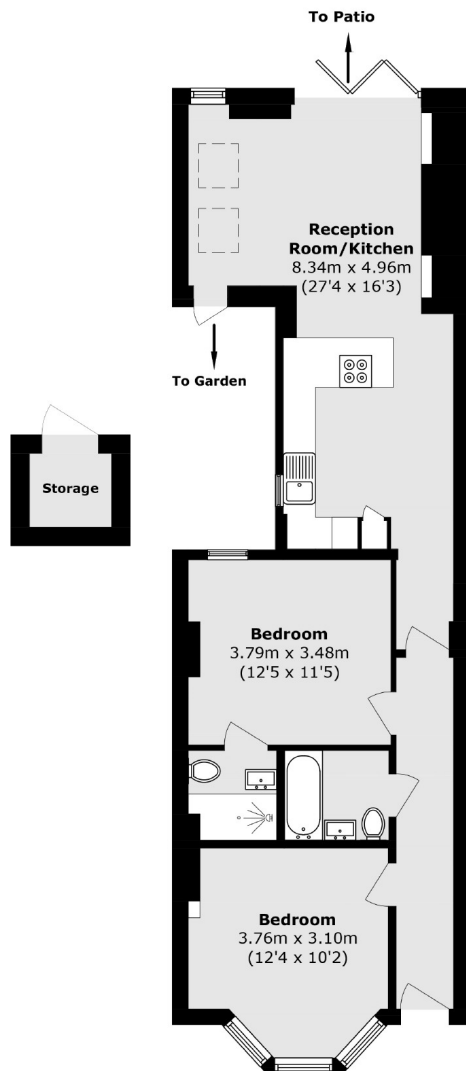
Mirabel Road is located off Dawes Road and is close to Parsons Green and Fulham Broadway (District line). This property is perfectly located close to local amenities, a leisure centre and Normand Park.

- Two Double Bedrooms • Two Bathrooms • Private Garden •
- Open Plan • Own Entrance • Parsons Green •



Chard

— ESTATE AGENTS —



Total area (approx.): 76.7 sq. m (825.5 sq. ft)
External Storage area (approx.): 1.5 sq. m (16.1 sq. ft)

Chard Fulham
656 Fulham Road,
London, SW6 5RX
020 7731 5115
fulhamsales@chard.co.uk

Energy Rating: C. We aim to make our particulars both accurate and reliable. However they are not guaranteed; nor do they form part of an offer or contract. If you require clarification on any points then please contact us, especially if you're traveling some distance to view. Please note that appliances and heating systems have not been tested and therefore no warranties can be given as to their good working order.