

Chard

— ESTATE AGENTS —



Castletown Road, W14

£675,000

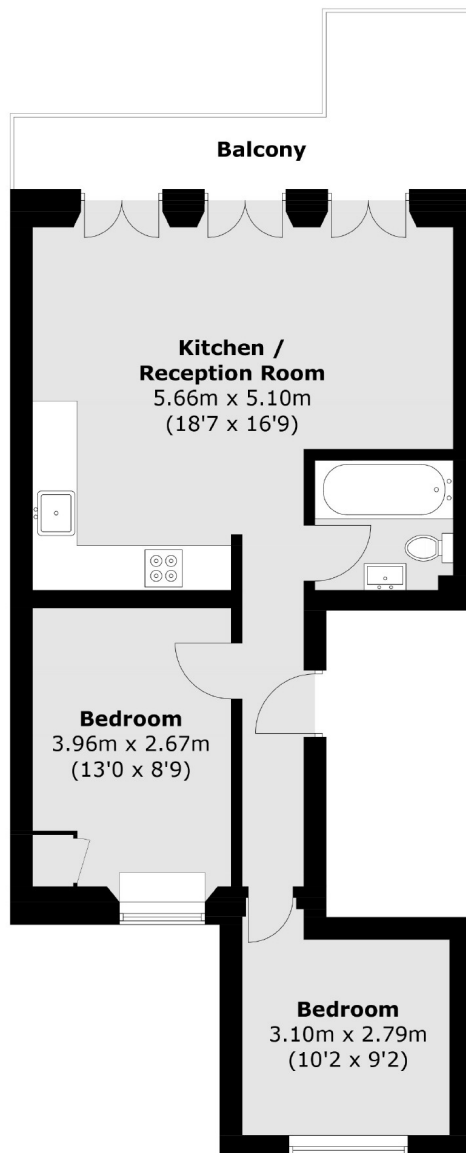
A beautifully finished two bedroom flat on a desirable road close to West Kensington Station. This property benefits from period features, high ceilings, plenty of light and an open plan kitchen/living space with french doors leading onto a private balcony.

Castletown Road is located moments away from Queens Club tennis courts, close to Barons Court and West Kensington tube stations. North End Road is also close by with many bus routes leading into the city and a selection of local amenities.

- Two Bedrooms • One Bathroom • Open Plan •
- Balcony • High Ceilings • West Kensington •

Chard

— ESTATE AGENTS —



Chard Fulham
656 Fulham Road,
London, SW6 5RX
020 7731 5115
fulhamsales@chard.co.uk

Energy Rating: C. We aim to make our particulars both accurate and reliable. However they are not guaranteed; nor do they form part of an offer or contract. If you require clarification on any points then please contact us, especially if you're traveling some distance to view. Please note that appliances and heating systems have not been tested and therefore no warranties can be given as to their good working order.