

Chard

— ESTATE AGENTS —



Archel Road, W14

£595,000

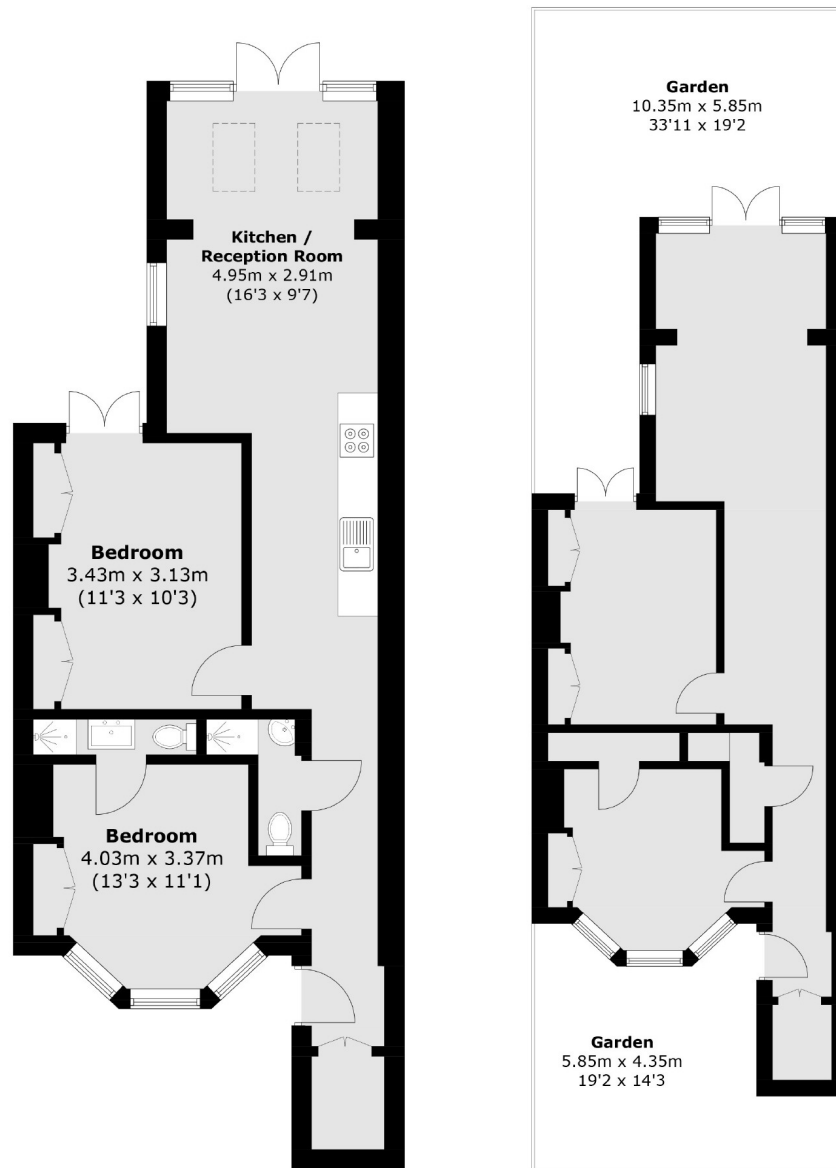
This two bedroom, garden flat is in excellent order throughout. The property comprises of two double bedrooms, two bathrooms and an open plan kitchen/living space with french doors leading out onto the large private garden. There is also potential to do the side return extension STPP.

Archel Road is well-located to both, West Kensington and Barons Court tube stations (District line & Piccadilly line). North End Road and Fulham Broadway are close by with a selection of local amenities. There are also many bus routes leading into the city.

- Two Bedrooms • Two Bathrooms • Large Private Garden •
- Open Plan • Period Conversion • West Kensington. •

Chard

— ESTATE AGENTS —



Site Plan

Total area (approx.): 55.8 sq. m (600.6 sq. ft)

Chard Fulham
656 Fulham Road,
London, SW6 5RX
020 7731 5115
fulhamsales@chard.co.uk

Energy Rating: D. We aim to make our particulars both accurate and reliable. However they are not guaranteed; nor do they form part of an offer or contract. If you require clarification on any points then please contact us, especially if you're traveling some distance to view. Please note that appliances and heating systems have not been tested and therefore no warranties can be given as to their good working order.