

# Chard

— ESTATE AGENTS —



## Atalanta Street, SW6

£675,000

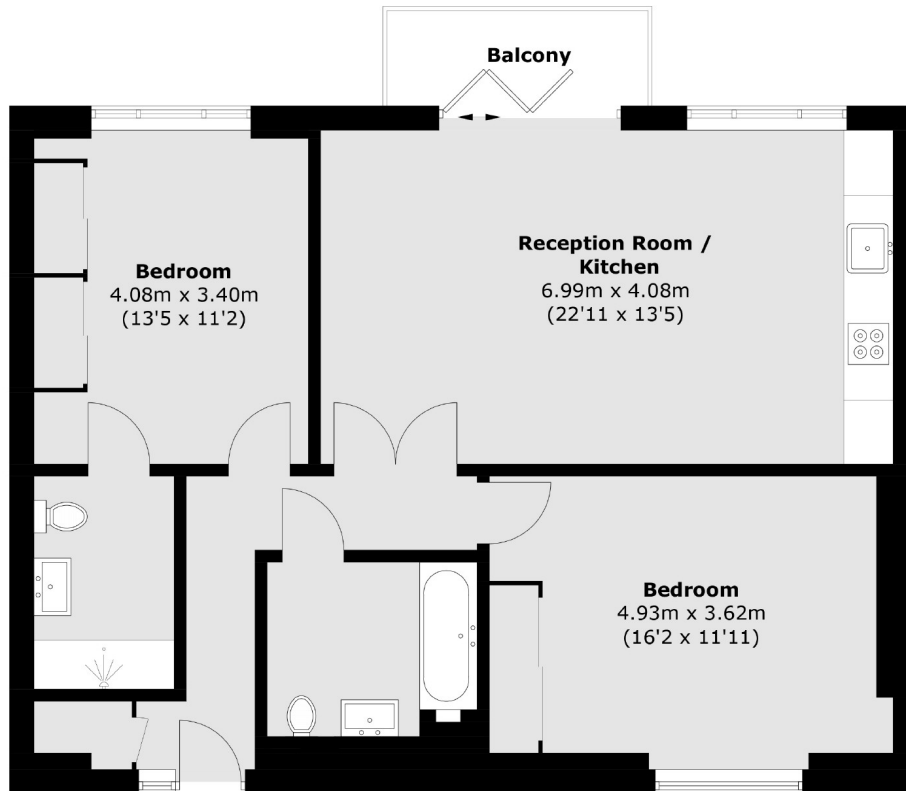
This property is in turn-key condition throughout, offering lateral space with a balcony. The property comprises of an open-plan kitchen and living space, two double bedrooms and two bathrooms. This property is in a quiet, gated community and would make a wonderful home.

Atalanta Street is an attractive residential street close to Bishops Park with many shopping and restaurant amenities close by on the Fulham Road and in Parsons Green. Access to the Thames Path which runs along the nearby River Thames is only a short walk away.

- Two Bedrooms • Two Bathrooms • Balcony •
- Open Plan • Excellent Condition • Bishops Park •

# Chard

— ESTATE AGENTS —



## First Floor

Total area (approx.): 82.4 sq. m (886.9 sq. ft)  
Balcony: 3.7 sq. m (39.8 sq. ft)

Chard Fulham  
656 Fulham Road,  
London, SW6 5RX  
020 7731 5115  
[fulhamsales@chard.co.uk](mailto:fulhamsales@chard.co.uk)

Energy Rating: C. We aim to make our particulars both accurate and reliable. However they are not guaranteed; nor do they form part of an offer or contract. If you require clarification on any points then please contact us, especially if you're traveling some distance to view. Please note that appliances and heating systems have not been tested and therefore no warranties can be given as to their good working order.