

Chard

— ESTATE AGENTS —



Weltje Road, W6

£550,000

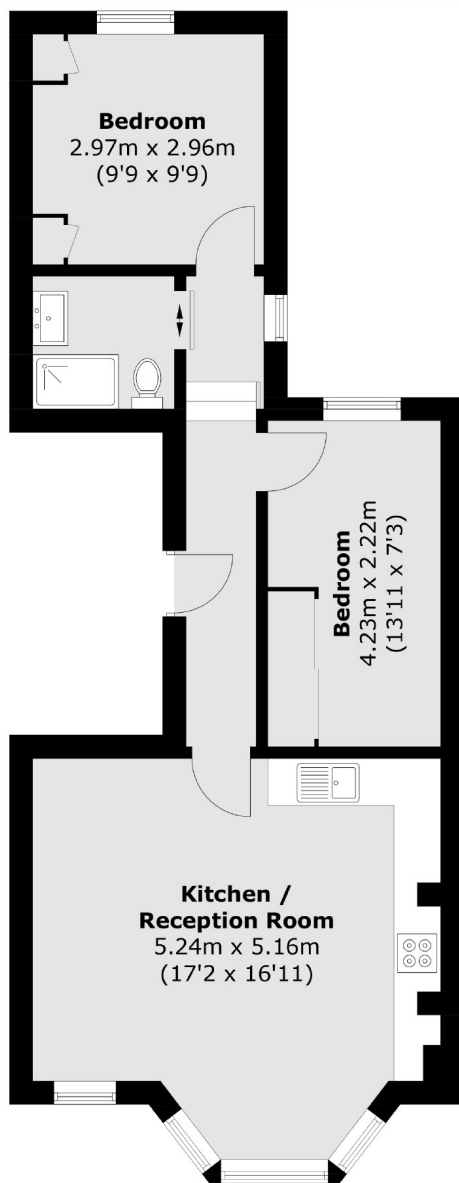
This two bedroom apartment is in excellent condition throughout, benefitting from an open plan kitchen living space with a bay window, high ceilings and plenty of natural light. This property would make a wonderful home or investment.

Weltje Road is ideally located close to the River Thames, Ravenscourt Park and Hammersmith Station. King Street is only moments away which has a plethora of shops, restaurants and bars.

- Two Bedrooms • One Bathroom • Excellent Condition •
- High Ceilings • River Thames • Hammersmith Station •

Chard

— ESTATE AGENTS —



Total area (approx.): 52.7 sq. m (567.2 sq. ft)

Chard Fulham
656 Fulham Road,
London, SW6 5RX
020 7731 5115
fulhamsales@chard.co.uk

Energy Rating: C. We aim to make our particulars both accurate and reliable. However they are not guaranteed; nor do they form part of an offer or contract. If you require clarification on any points then please contact us, especially if you're traveling some distance to view. Please note that appliances and heating systems have not been tested and therefore no warranties can be given as to their good working order.