

Chard

— ESTATE AGENTS —



Dan Leno Walk, SW6

£450,000

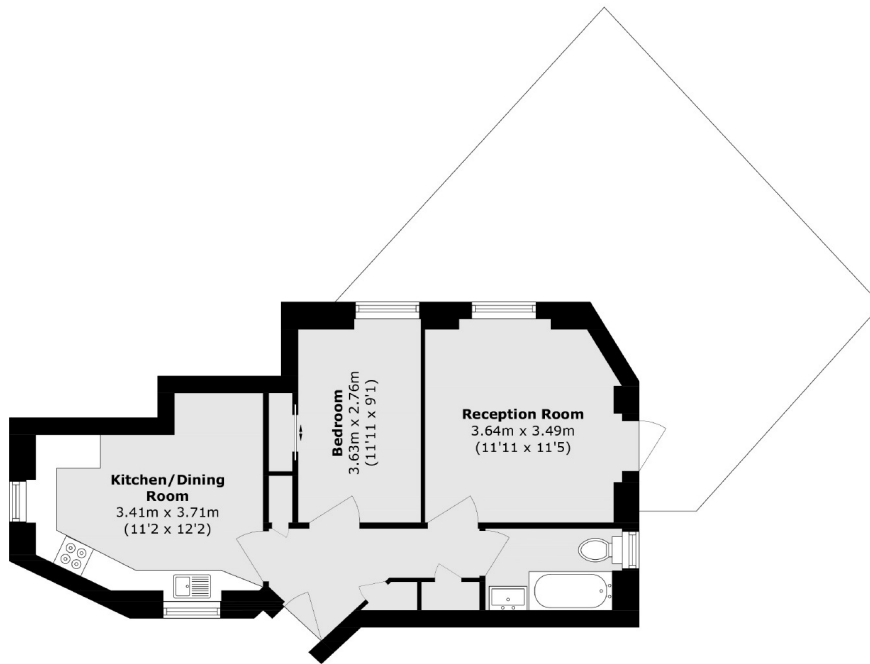
This apartment is in excellent condition throughout and would make a wonderful home or investment. The property benefits from its own entrance, a double bedroom with ample storage, a separate eat in kitchen and living space which leads out onto a private patio garden.

Dan Leno Walk is located off Fulham Road in the Moore Park Estate with excellent transport links leading into Chelsea, the city and Fulham Broadway station is moments away. Fulham offers a great selection of eateries and popular local amenities all on your doorstep.

- One Bedroom • One Bathroom • Garden •
- Separate Kitchen • Own Entrance • Fulham Broadway •

Chard

— ESTATE AGENTS —



Total area (approx.): 50.0 sq. m (538.2 sq. ft)

Chard Fulham
656 Fulham Road,
London, SW6 5RX
020 7731 5115
fulhamsales@chard.co.uk

Energy Rating: C. We aim to make our particulars both accurate and reliable. However they are not guaranteed; nor do they form part of an offer or contract. If you require clarification on any points then please contact us, especially if you're traveling some distance to view. Please note that appliances and heating systems have not been tested and therefore no warranties can be given as to their good working order.