

# Chard

— ESTATE AGENTS —



## Althea Street, SW6

£525,000

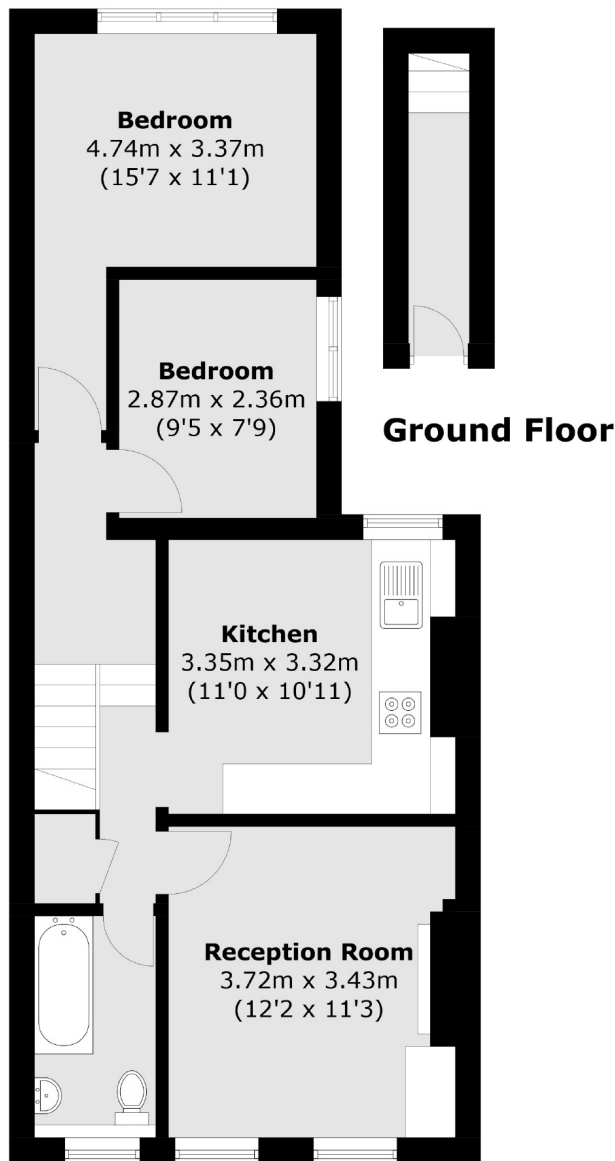
This is an excellent opportunity to purchase a two bedroom top floor flat with its own entrance and a separate kitchen and living space. This property would make a wonderful home or investment.

Althea Street is located just off Townmead Road. The closest underground station is Fulham Broadway and the nearest overground station is Imperial Wharf. There are also many bus routes on Imperial Road which lead into the city and Sloane Square.

- Two Bedrooms • Separate Kitchen • Top Floor •
- Period Conversion • Own Entrance • Leasehold •

# Chard

— ESTATE AGENTS —



## First Floor

Total area (approx.): 58.9 sq. m (634.0 sq. ft)

Chard Fulham  
656 Fulham Road,  
London, SW6 5RX  
020 7731 5115  
fulhamsales@chard.co.uk

Energy Rating: D. We aim to make our particulars both accurate and reliable. However they are not guaranteed; nor do they form part of an offer or contract. If you require clarification on any points then please contact us, especially if you're traveling some distance to view. Please note that appliances and heating systems have not been tested and therefore no warranties can be given as to their good working order.