

Chard

— ESTATE AGENTS —



Fulham Palace Road, SW6

£275,000

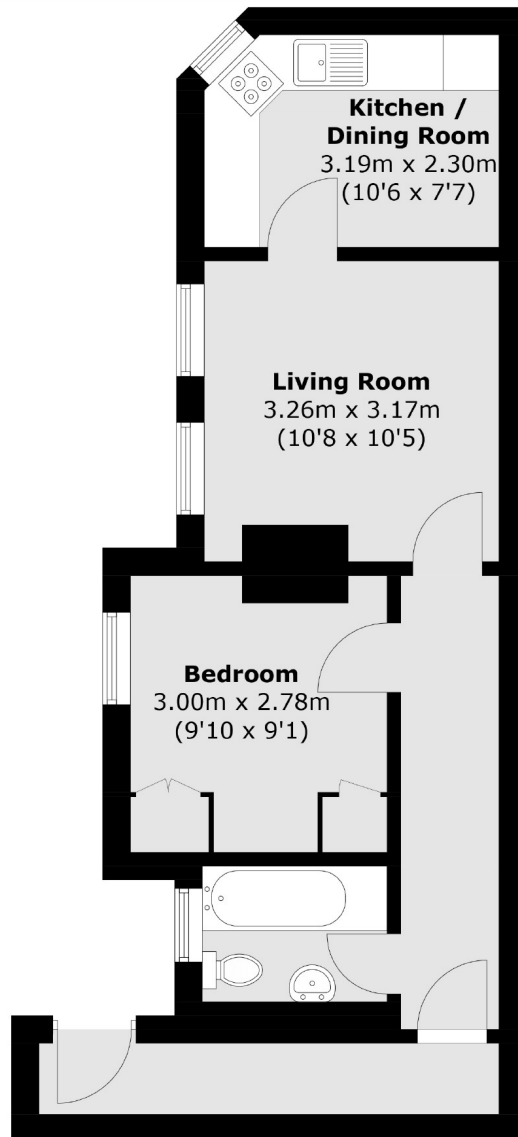
This one bedroom apartment is excellently located just off Colehill Gardens, close to Bishops Park and the River Thames. This property comprises of a separate kitchen and living space, a double bedroom with ample storage and a bathroom.

Putney Bridge and Parsons Green tube stations are close by in addition to many bus routes into the city, Putney and Hammersmith. There is a selection of local amenities, restaurants and cafés on Fulham Road and Fulham high street. Bishops Park tennis courts are also moments away from the property.

- One Bedroom • One Bathroom • Ample Storage •
- Potential To Modernise • Bishops Park • Putney Bridge Station •

Chard

— ESTATE AGENTS —



Total area (approx.): 41.1 sq. m (442.4 sq. ft)

Chard Fulham
656 Fulham Road,
London, SW6 5RX
020 7731 5115
fulhamsales@chard.co.uk

Energy Rating: D. We aim to make our particulars both accurate and reliable. However they are not guaranteed; nor do they form part of an offer or contract. If you require clarification on any points then please contact us, especially if you're traveling some distance to view. Please note that appliances and heating systems have not been tested and therefore no warranties can be given as to their good working order.