

Chard

— ESTATE AGENTS —



Querrin Street, SW6

£650,000

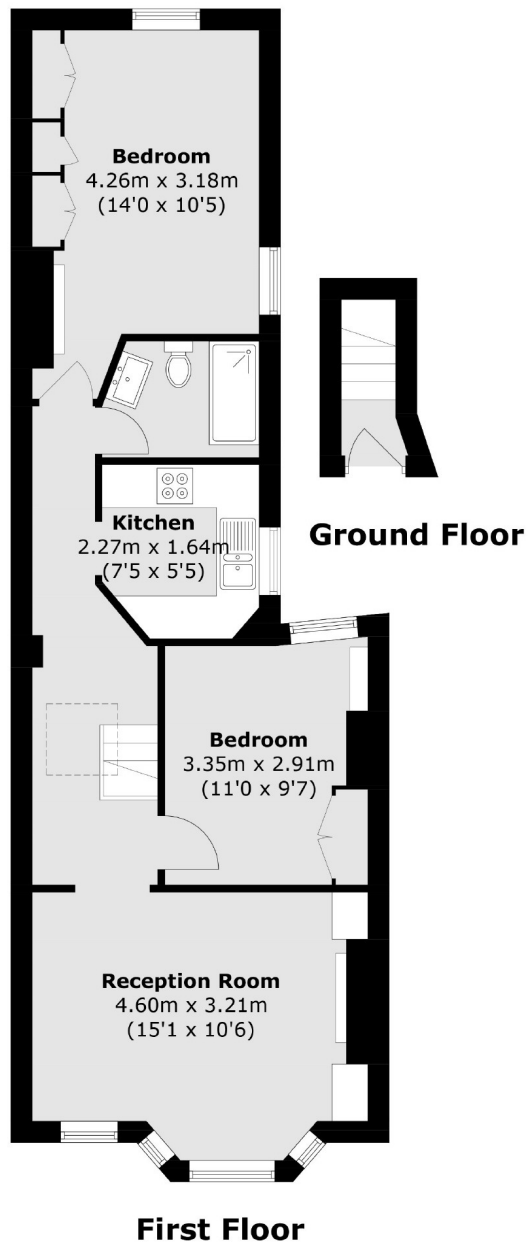
This two bedroom, period conversion flat has been recently renovated throughout to a high standard benefitting from new windows, a bespoke fitted kitchen and new wiring. The property is located on the first floor and comprises of a separate kitchen and living space, two double bedrooms and a shower room.

Located in one of Sands Ends premier roads the property is situated close to all of the amenities on the Wandsworth Bridge Road, including many excellent local shops, restaurants and pubs.

- Two Bedrooms • One Bathroom • Separate Kitchen •
- Recently Renovated • Period Conversion • Imperial Wharf •

Chard

— ESTATE AGENTS —



Total area (approx.): 63.6 sq. m (684.6 sq. ft)

Chard Fulham
656 Fulham Road,
London, SW6 5RX
020 7731 5115
fulhamsales@chard.co.uk

Energy Rating: D. We aim to make our particulars both accurate and reliable. However they are not guaranteed; nor do they form part of an offer or contract. If you require clarification on any points then please contact us, especially if you're traveling some distance to view. Please note that appliances and heating systems have not been tested and therefore no warranties can be given as to their good working order.