

Chard

— ESTATE AGENTS —



Fulham Palace Road, SW6

£495 pw (£2,145 pcm)

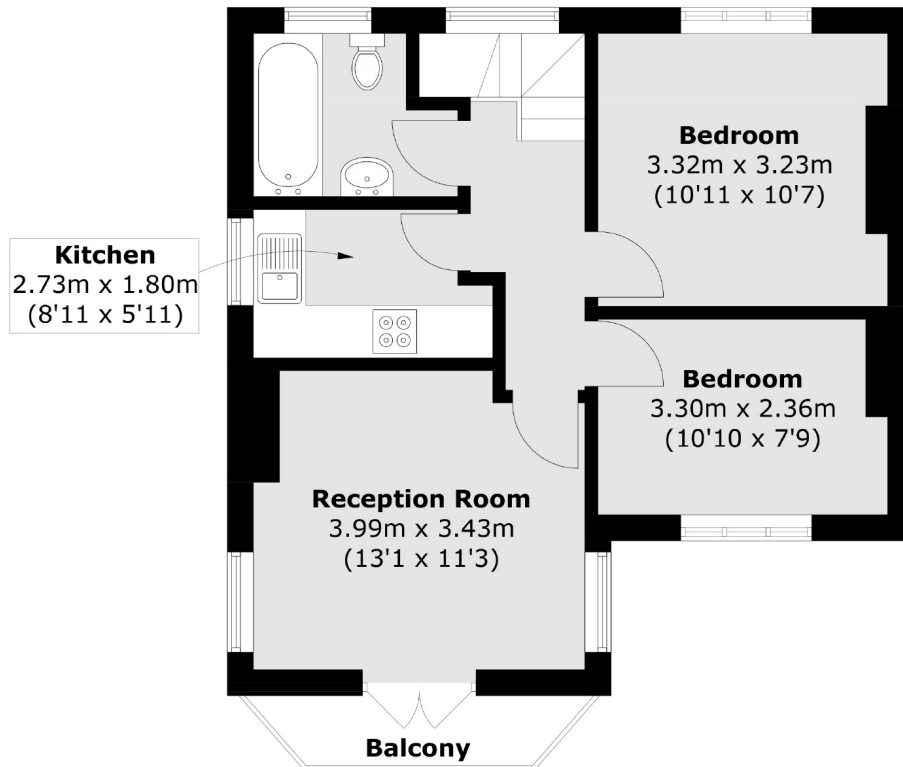
This two bedroom first floor Victorian conversion apartment on Fulham Palace Road offers a bright reception with access to a balcony, a separate kitchen, two double bedrooms and a family bathroom.

Putney Bridge (District line) tube station is close by in addition to many bus routes into the city, Putney and Hammersmith. There is a selection of local amenities, restaurants and cafes on Fulham Road and Fulham high street, moments away from the property.

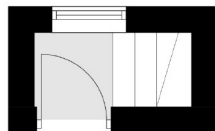
- First Floor Flat • Two Bedrooms • Spacious Reception •
- Private Balcony • Fitted Kitchen • Tiled Bathroom •

Chard

— ESTATE AGENTS —



First Floor



Ground Floor

Total area (approx.): 48.7 sq. m (524.2 sq. ft)
Balcony area : 2.6 sq. m (28 sq. ft)

Chard Fulham
656 Fulham Road,
London, SW6 5RX
020 7384 1400
fulhamlettings@chard.co.uk

Energy Rating: E. We aim to make our particulars both accurate and reliable. However they are not guaranteed; nor do they form part of an offer or contract. If you require clarification on any points then please contact us, especially if you're traveling some distance to view. Please note that appliances and heating systems have not been tested and therefore no warranties can be given as to their good working order.